



Look no further...

"I didn't know you had the capability to do that here." That's a statement we hear quite often when we tell people about the exciting things happening in our hospitals, medical offices and research facilities. The fact is, residents of the North Shore need look no further than Evanston Northwestern Healthcare for the medical care they need. In this Annual Report, we'll show you that exceptional care is available right in your neighborhood.

The Professional Staff of Evanston Northwestern Healthcare comprises some of the finest physicians anywhere. Many have built national, and in some cases international, reputations for their knowledge and skills. Patients who choose an Evanston Northwestern Healthcare physician can tap into this network of expertise because we take a collaborative, multidisciplinary approach to patient care.

The quality of our medical staff also serves as a magnet for other physicians who want to work in an environment that allows them to take care of patients, conduct research and teach tomorrow's physicians. You'll read about a few of our new colleagues in this report.

At Evanston Northwestern Healthcare, research is aimed squarely at improving our patients' lives—today and in the future. Our efforts have garnered us quite a bit of attention and funding—since the Evanston Northwestern Healthcare Research Institute was established in 1996, we've gone from \$8 million to \$81.5 million in total external awards. And the National Institutes of Health ranks us in the top quartile of independent research hospitals, putting us in the company of such institutions as New York's Beth Israel Medical Center, University Hospitals of Cleveland, and Cedars-Sinai Medical Center in Los Angeles.

Our Epic Journey

This past year we became one of only a handful of healthcare organizations in the nation to begin to use completely electronic medical information systems. The Epic system eliminates paper charts and replaces them with a single, secure, electronic medical record that is updated in real time. Epic allows physicians to place orders electronically, incorporates the patient's care plan into the record and alerts us to potential medical issues. Doctors, nurses and all caregivers document the care they provide directly into the electronic record. This greatly reduces miscommunication, redundant tests and human error. Despite the proven benefits, fewer than 5 percent of U.S. hospitals use such a system.

Though the investment of time, money and effort is enormous, we believe it's the right thing to do, and that electronic medical records will become the standard of care in the

***On our cover:** In our cardiac catheterization lab, Ted Feldman, MD, holds an innovative device that's used to repair a hole in the heart without open surgery. Dr. Feldman is one of many physicians at Evanston Northwestern Healthcare who heal, teach and do research, continually finding new and better ways to care for patients today and in the future.*

distant future. In this, and many other areas, we would rather be a leader than a follower.

Maintaining Your Trust

We recognize our multiple roles—as a community resource, a major employer and a good corporate citizen.

This year, we instituted a new Audit Committee of the Board of Directors that works with our public accountants to monitor the integrity of our financial reporting and control processes. And we consolidated our Corporate Compliance and Integrity Program, Internal Audit and Control, and Risk Management functions.

Our Institutional Review Board, our Ethics Committee and our Center for Compassion in Medicine are extremely active in working to maintain our high standards and maintain the trust that all our stakeholders have placed in us.



Mark R. Neaman (left) and Homer J. Livingston, Jr.

Counteracting our External Challenges

We continuously monitor clinical, financial and patient satisfaction data so that we can make good medical decisions and good business decisions. While some may see the imperative to provide superior care and the need to manage costs to be in conflict, we see them as complementary. Through our Value Improvement Program, our physicians, management and staff have identified more than \$10 million in cost improvements this year. This is a remarkable accomplishment, and an essential one, as you'll see.

Throughout this fiscal year, we've referred to our challenges as the Three M's: Medicare, Managed Care and Malpractice. Medicare and managed care companies have reduced payments to us by some \$50 million this year. Malpractice coverage is costing us an additional \$20 million this year, and the costs for such elements as drugs, cardiac stents and labor keep rising. The stock market has not been particularly friendly this year, either.

Though our revenues and expenses are better than plan, these external factors are overwhelming the advances we've made in improving efficiency and improving our costs. Despite >>

the harsh external environment, the fact that we ended the fiscal year in the black can be attributed to the diligence of our physicians and staff, and to the generosity of our donors.

Campaign to Ensure Continued Excellence

Because of these outside challenges, we need additional support from those in the community who share our commitment to excellence. We need extraordinary resources to ensure an exceptional level of care, accelerate our pursuit of research, and expand our facilities to meet growing needs. For that reason, we launched The Campaign for Evanston Northwestern Healthcare, a five-year effort to raise \$100 million.

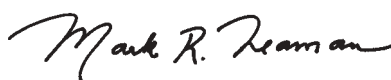
We are encouraged by the response we have already received from our longtime supporters who have made early generous gifts, led by Life Director Charles R. Walgreen Jr. and his family. We are privileged to name the new academic medical research building being constructed on the Evanston Hospital campus, the Charles R. Walgreen Jr. Building. The Owen L. Coon Foundation has endowed the Owen L. Coon Chair of Cardiothoracic Surgery, whose first holder will be Todd Rosengart, MD. Board member Connie Duckworth has endowed the Duckworth Family Chair of Breast Cancer Research, which will be held by Vimla Band, PhD.

We are grateful for this exceptional philanthropy, but we realize that we need to expand that circle of support. This Campaign needs to be a far-reaching community-wide effort calling on us all to help at whatever level we can.

Ask any of our major contributors why they support Evanston Northwestern Healthcare and they are likely to tell you that they appreciate the chance to improve the breadth and quality of healthcare in their neighborhood today, and, at the same time, to touch the future of medicine. Each day, we deliver care to members of our community and we strive to improve that care for future generations. For the best place to receive care, the best place to work, or the best recipient of your charitable support, look no further than Evanston Northwestern Healthcare.



Homer J. Livingston, Jr.
Chairman of the Board

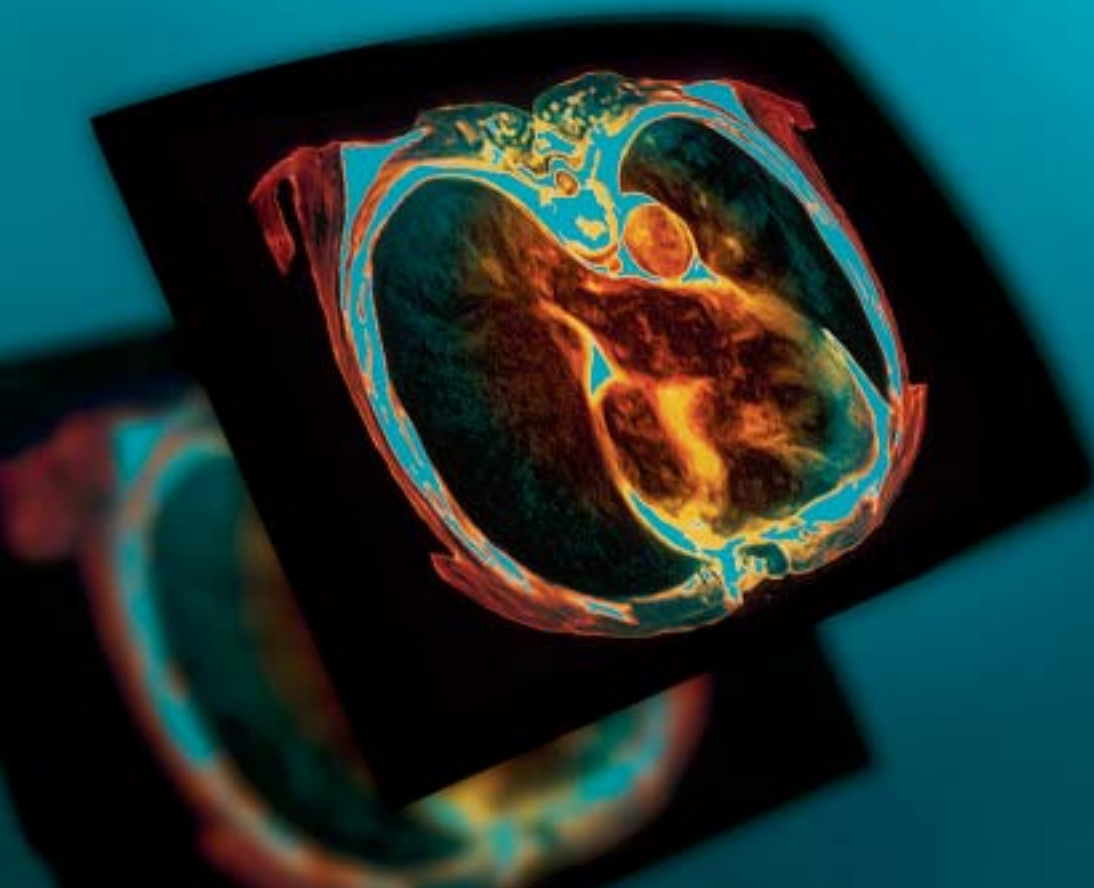


Mark R. Neaman
President and Chief Executive Officer

ADVANCED IMAGING

Advances in imaging technology allow for diagnosis and sometimes treatment without scalpels. Because of our standing as a top research site for GE,

Evanston Northwestern Healthcare's patients have access to some of the most powerful imaging equipment and most current knowledge in the field. >>





ADVANCED IMAGING

Robert Edelman, MD, wrote the top textbook on magnetic resonance, which is not news to students, residents and fellows such as Faisal Sami, MD (l. to r.), Ejaz Shamim, MD, and Susan Shi. Evanston Northwestern Healthcare is rapidly becoming a leader in imaging research, with the latest generation 16-slice multidetector CT, and a 3 Tesla MRI that has twice the field strength of any system on the North Shore.

>> Thanks to a research partnership with GE Medical Systems, we receive new CT (computerized tomography) and MR (magnetic resonance) equipment each year. “They give us advanced hardware and software; we perform clinical validation and help develop new ways to use the technology,” explained Robert Edelman, MD, the William B. and Catherine Graham Chairman of Radiology, Professor of Radiology at the Feinberg School of Medicine and Past President of the International Society for Magnetic Resonance in Medicine. He came to Evanston Northwestern Healthcare from Harvard Medical School three years ago.

“Bob has a worldwide reputation for being an expert in MR—and cardiac MR in particular,” said Jason Polzin, Manager of the Applied Science Lab, Central Region, for GE Medical Systems. “We have the technical expertise to develop things that he’d like to work on. And being in a hospital setting, we can test contrast agents and do things that we can’t do in an engineering lab.”

According to Dr. Edelman, “Our goal is to become a leading center for noninvasive cardiac imaging, for developing and implementing new technology, and for molecular imaging. We’ve expanded our NIH funding by \$5 million in the last three years, and we will continue to do so.”

One research project in conjunction with gastroenterologist Randall Brand, MD, Clinical Director of our Pancreatic Cancer Program and Associate Professor at the Feinberg School, >>

>> aims to develop a new kind of radio antenna. “Pancreatic cancer may be curable when detected early, at a size of less than one centimeter, but seldom when the tumor is first detected at a larger size,” Dr. Edelman explained. “MR is good for detecting cancer, but it has limitations on the signal for seeing very small things. This new antenna would be inserted endoscopically [through a tube] to boost the signal from the inside.”

The imaging team also is working with Wendy Rubinstein, MD, PhD, Head of the Division of Medical Genetics and an Assistant Professor at the Feinberg School, on using MR to detect breast cancer in patients with a genetic predisposition to the disease. “MR is more sensitive than mammography—probably too sensitive for most people but potentially lifesaving for those at high risk,” said Dr. Edelman. The goal of the study is to identify who could most benefit from breast MRI, and for whom the test is not appropriate. “We want to control the technology, not have the technology control us.”

In the future, imaging may be used to monitor the effects of gene therapy by determining whether certain protein molecules are present in the right amounts and the right locations to fight disease. It may also be used in conjunction with synthetic tissues or nanotechnology (microscopic medical tools), both of which are being explored by Northwestern University’s Biomedical Engineering department.

“Our goal is to strengthen our partnerships and build a unified research network that can go after larger grants, be a site for multicenter trials, involve CORE (the Center on Outcomes, Research and Education) and offer nationally known fellowship programs,” Dr. Edelman said. ■

SURGICAL ALTERNATIVES

If you had a serious medical condition, how far would you go to find a physician at the top of his or her field? Someone who could perform procedures with smaller incisions, less pain and faster recovery? >>





In the new interventional radiology suite at Highland Park Hospital, Michael Verta, MD, a vascular surgeon in private practice, and interventional radiologist Frank Facchini, MD, team up to treat patients. Both are Assistant Professors at the Feinberg School. Combining their different perspectives and expertise leads to better care and better outcomes.

- >> Evanston Northwestern Healthcare's physicians have the breadth and depth of expertise to find a solution that's right for each patient, whether that's traditional open surgery or an alternative to surgery. Here are just two examples; for more, see www.enh.org.

Non-surgical treatment of heart disease

"Between the 1950s and 1980s, the only mechanical therapy for treating heart disease was open surgery," explained Ted Feldman, MD, the Mr. and Mrs. Charles R. Walgreen, Jr. Chair of Cardiology, Director of the Cardiac Catheterization Lab and a Professor at the Feinberg School. Today angioplasty, the use of a balloon catheter to open blocked arteries, is used in more than half of the patients who need treatment for coronary disease. "But while many people are familiar with angioplasty, they're less aware that we've made similar breakthroughs in the rest of the circulation," he said.

The current standard for treating blockages in the carotid arteries (arteries in the neck leading to the brain) is surgery. But Dr. Feldman performs an experimental technique that requires only a tiny incision to insert a balloon catheter that opens the artery and a stent that props it open. It won't be considered "experimental" for long. "A randomized study comparing the stent with traditional surgery was presented to the American Heart Association last November," he said. "It showed that carotid stenting can be acceptable in high-risk surgical patients—in fact, the procedure has lower complication rates than surgery."

Great strides have been made in treating diseases of the heart valves, as well. This year, Dr. Feldman became the first physician in the United States to use the Evalve™ system, a method of repairing malfunctioning mitral valves non-surgically by deploying a small clip through a catheter. Patients participating in early clinical trials have returned home after just one day in the hospital—a sharp contrast to the long recovery period required for open-heart surgery.

>>

>> Using imaging technology to treat disease

Interventional radiologists use imaging technology—X-rays, magnetic resonance (MR) imaging, ultrasound and computed tomography (CT)—to guide small instruments through the body. Alone or with other physicians they can treat cardiac disease, cancer, spinal fractures and other conditions without the need for open surgery. Recently, they've formalized their alliance in the Endovascular Center, which brings together interventional radiologists, vascular surgeons and interventional cardiologists to offer patients with vascular disease better care and easier access to specialists.

Endovascular surgery involves treating heart or circulatory problems from *inside* the blood vessel. Only a handful of major medical centers have a multispecialty team like ours.

"Patients who are referred to the new Endovascular Center will have access to the best minds all in one place," said interventional radiologist Sean Tutton, MD, the center's director and an Assistant Professor at the Feinberg School of Medicine. "We will have multidisciplinary conferences where we come together to discuss each patient, just as the Kellogg Cancer Care Center does, and we will work closely with referring physicians." The center's research program will build on existing cardiology, radiology and surgery department research and ultimately host symposia for physicians from around the country.

Among other procedures performed under imaging guidance are

- **Radiofrequency Ablation:** A promising new technology that uses a heated probe to destroy hard-to-reach tumors that can't be removed surgically.
- **Vertebroplasty:** A non-surgical treatment for spinal fractures in which a medical-grade cement is injected into the fracture to stabilize and relieve pain.
- **Uterine Fibroid Embolization:** An alternative to hysterectomy for some women suffering from fibroid tumors in the uterus. Physicians insert tiny particles to block the arteries that supply blood to the fibroids; without a blood supply, the tumors shrink.

Minimally invasive procedures often mean shorter hospital stays, less postoperative pain and faster recovery. We now offer minimally invasive options in many areas, including gastroenterology, gynecology, oncology, ophthalmology, urology and orthopaedics. For innovative approaches to care, look no further than Evanston Northwestern Healthcare. ■



A quarter to a third of strokes may be related to congenital holes in the heart. The standard therapy is to patch or stitch the hole closed. But small holes often go unrepaired because the risk of surgery tends to be higher than the risk of stroke. Now, with devices like this one (also shown on the cover), a hole can be repaired on an outpatient basis. The device is inserted through a small incision, put into position and then opened like two umbrellas on either side of the hole.

PREVENTING INFECTION

In the sci-fi movie “Minority Report,” futuristic police officers arrest people for crimes they’ve not yet committed.

In our labs, scientists work to arrest the spread of microbes before they’ve had the chance to cause illness. The labs might not have as much action as the movies, but the special effects are pretty spectacular. >>





Stopping disease before it starts: Lance Peterson, MD (l. to r.); Tom Thomson, PhD;

Patrick Gavin, MD; and Karen Kaul, MD, PhD, examine data that show

- *how many patients are colonized—but not yet infected—by a particular organism,*
- *how many are actually infected,*
- *how long infected patients had been colonized before developing the infection,*
- *how many patients were on the unit at that time,*

*and several other data points. By analyzing the data, they hope to **predict** who will get sick and isolate them **before** they can infect others—an approach to disease control that’s unique to Evanston Northwestern Healthcare.*

>> Hospital-acquired infections strike 2 million Americans each year, causing 88,000 deaths and costing \$4.5 billion. One of the worst culprits is *Staphylococcus aureus*. Some 25 to 30 percent of us carry around some type of staph bacteria without becoming ill. But when a patient has surgery, there’s a chance that the organism can invade the incision. “Seventy to 90 percent of those who become infected get their own bacteria,” said Lance Peterson, MD, Director of Clinical Microbiology and Infectious Diseases Research and a Professor at the Feinberg School of Medicine. “So we try to get rid of it before surgery.”

Here’s where the DNA testing comes in. At Evanston Northwestern Healthcare, certain patients at risk for *Staphylococcus aureus* infection are tested before surgery to see if they carry the bacterium—a simple swab of the nose is all it takes. The lab conducts real-time PCR (polymerase chain reaction) testing to identify the organism at the molecular level. Other patients who are at high risk for methicillin-resistant staph infections (MRSA) are also tested using the same techniques, so it can be removed from their noses before they get an infection.

“We can pick up in hours what ordinarily would take three to five days to confirm,” said Karen Kaul, MD, PhD, Director of the Molecular Diagnostics Laboratory and a Professor at the Feinberg School. Evanston Northwestern Healthcare’s lab is the first to achieve higher sensitivity with the swab/PCR test than with the traditional culture.

>>

PREVENTING INFECTION

>> Another test in the laboratory (DNA fingerprinting) can identify the exact strain of bacteria so we can tell if the patient carried the bacteria in themselves or caught it from someone else, a Sherlock Holmes way to stop spread of bacteria. Still another DNA test quickly tells if a staph germ is resistant to antibiotics, which is very important for therapy. Once diagnosed, the patient can be easily treated. For example, “If patients with MRSA are started on the wrong antibiotic, it lengthens their stay and costs about \$15,000 more than if they were treated correctly from the beginning,” said Dr. Peterson. “Molecular testing costs a little more initially, but by reducing infections, complications and length of stay, it will save us much more in the long term.”

Evanston Northwestern Healthcare is one of a very few institutions conducting data mining—digging through computerized microbiology information on our inpatients and outpatients for early warnings of disease outbreaks. “We do for Evanston Northwestern Healthcare what the Centers for Disease Control do for the country,” said Dr. Peterson. Thanks to our Microbiology Department, we can detect influenza and Respiratory Syncytial Virus (RSV) in the community and are able to alert our physicians what infection is causing symptoms in patients coming to their offices. (RSV is a common virus that can cause serious illness in infants and young children.)

Branching out even further, our scientists are working with Singapore and German authorities to develop a test for SARS. And, with the help of a colleague in Singapore, they have developed one of the first easy, fast and accurate tests for malaria. Only a few labs in the country have achieved the sophistication—and results—of the Evanston Northwestern Healthcare lab. ■

RESEARCH

“We’re not an up-and-coming research institution anymore. We are good on our way to great.”

So says Leopold Selker, PhD, Senior Vice President and

Chief Administrative Officer, who has witnessed the ENH Research Institute rise to >>





RESEARCH

Hamid Band, MD, PhD, and Vimla Band, PhD, have brought their innovative work—which bridges molecular biology and clinical medicine with a focus on cancer—to Evanston Northwestern Healthcare. Clinical and basic scientists work side-by-side in the new Arthur and Gladys Pancoe-Evanston Northwestern Healthcare Life Sciences Pavilion on NU's Evanston campus. And the Charles R. Walgreen Jr. Building, currently under construction on the Evanston Hospital campus, will house additional office and lab space. By 2004, we will have increased our research space from 25,000 square feet to 100,000 square feet.

>> national prominence in just six years. “The confluence of Board, management and physician leadership has taken us to this exciting moment in our growth.”

Evanston Northwestern Healthcare has conducted medical research throughout its more than 100-year history. But in 1996, we consolidated our research activities into the ENH Research Institute and set out to recruit the brightest and the best. The charts on the next page show the dramatic results.

Evanston Northwestern Healthcare is in the top 10 percent of all institutions that receive funding from the National Institutes of Health. Among independent research hospitals, we have more NIH funding than Henry Ford Health System in Detroit, University Hospitals of Cleveland and Beth Israel Medical Center in New York City, and we're gaining on such institutions as Cedars-Sinai Medical Center in Los Angeles.

What distinguishes our research program is the dual focus on clinical and translational research, which takes discoveries from the basic sciences and biomedical engineering and translates them into advancements in patient care. Basic scientists, including our colleagues at Northwestern University, lay the foundation for our work. We then figure out how to put their discoveries into practice. It is a very practical, hands-on approach, one that helps us attract new physician-scientists.

Our commitment to quality is another draw. Evanston Northwestern Healthcare's Center on Outcomes, Research and Education (CORE) is the largest of its kind in the nation. Under the direction of David Cella, PhD, CORE helps us generate, interpret and apply outcomes data to improve care and patients' quality of life. “Dr. Cella has done some of the world's most important research on quality of life. His instruments are the gold standard,” says Barbara K. Rimer, DrPH, former director of the National Cancer Institute's Division of Cancer Control and Population Sciences. “Moreover, he and his colleagues have been a pivotal force in educating healthcare providers and others that quality of life indeed is both >>

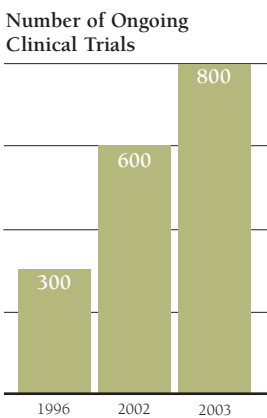
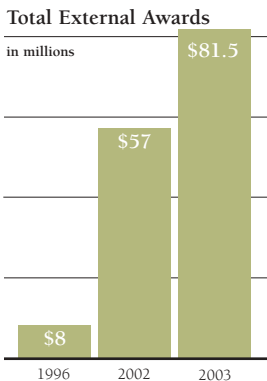
RESEARCH

>> measurable and worth measuring.” Accomplishments like his are another reason that both prominent and promising scientists are drawn to Evanston Northwestern Healthcare.

Our latest recruitment triumphs include the team of Vimla Band, PhD, and her husband, Hamid Band, MD, PhD, as Directors of the new Division of Cancer Biology and the new Division of Molecular Oncology, respectively. They bring with them a national reputation for their research in breast cancer, validated with more than \$15 million in ongoing NIH funding. Dr. Vimla Band is working to identify genetic markers for early diagnosis of breast cancer; she comes to us from New England Medical Center and Tufts University. Dr. Hamid Band’s area of interest is signal transduction—the molecular mechanisms that control the ways cells respond to external agents and inner biochemical cues. It’s important to understanding how cells turn cancerous. He’s joined us from Brigham and Women’s Hospital and Harvard Medical School.

Pablo Gejman, MD, is also new to our team—he will anchor our new Center for Genetics in Psychiatry. At the University of Chicago, he built an internationally renowned research program with an emphasis on the genetics of schizophrenia. Here he will continue to study the inherited factors in major psychiatric disorders, molecular genetic diversity and psychopharmacology. He holds one of the largest NIH genetic grants awarded to a psychiatrist and directs the largest effort of the National Institute of Mental Health for studying the genetics of schizophrenia.

Talent alone, however, doesn’t bring about research discoveries. In addition to the National Institutes of Health, our research funds come from pharmaceutical companies, medical equipment manufacturers and corporate and individual philanthropists, some of whom have funded endowed chairs in areas of research priority. “Our supporters on the North Shore cheer on our pursuit of excellence and understand the benefit of having a leading healthcare system in their neighborhood,” said Dr. Selker. “Additional funding will enable us to achieve even more—it makes the difference between being ‘good’ and ‘great.’” ■



NIH Rankings of independent research hospitals

| | |
|------------------|-----|
| 1996 | 65 |
| 2002 | 32 |
| 2003 (projected) | 25* |

* The rankings for fiscal year 2003 will be released in March 2004.

MEDICAL INFORMATICS

When we loaded the software into this computer terminal, we also installed our values: safety, patient privacy and collaborative care. >>





ENH EVANSTON
NORTHWESTERN
HEALTHCARE

ENH

MEDICAL INFORMATICS

On a roll at Glenbrook Hospital: Internist Matthew Sherwood, MD, and Justine Janowski, RN, now use this portable computer terminal to access their patients' charts and enter new information—right at the patient's bedside. If Dr. Sherwood sees a patient in his office in the morning, and admits her to the hospital that afternoon, the record of her office visit will be here before the patient arrives. The patient won't be asked for her medical history or insurance information again, because it's all part of the electronic record. It's seamless—and safe.

>> Evanston Northwestern Healthcare is one of a small number of organizations using a completely electronic medical information system that's structured around our patients.

Here's how it works for patients:

- Helps doctors and nurses collaborate on their care by keeping their records accurate and complete at all times.
- Tracks their treatment plan, medications and allergies, and alerts us to potential problems or drug interactions.
- Allows their physicians to access their test results in real time—even from home.
- Frees nurses to spend more time with patients and less time photocopying, faxing and rewriting documents.
- Reduces human error by eliminating the need to interpret handwriting.
- Keeps medical records secure and password-protected, though instantly accessible to those who need to see them.
- Makes every interaction with us seamless—from appointment scheduling and exam registration to hospital care and billing.

Next year, our patients will be able to access the system online to view their medical records, check recent test results, order prescription refills and request appointments.

Implementation of this system represents an investment of some \$30 million, plus countless hours of planning, training and practice. To prepare, we built a >>

>> university-scale training center that operates seven days a week and has 40 trainers. At peak periods, our training center could see 300 students in a single week. By next May, some 10,000 “learners” will have completed a class (some people take more than one class).

Why make this commitment at a time when healthcare organizations are under increasing financial pressures? “Because it’s an investment in our future,” said Nancy Semerdjian, RN, Senior Vice President of Medical Informatics. “This kind of system has been proven to dramatically improve care and save lives. We believe it will be the gold standard for healthcare in the near future, and we want to be leading the way. Throughout the implementation process, we have worked with the vendor, Epic Systems, to customize their products to Evanston Northwestern Healthcare’s needs. This collaboration has made the system even better, because some of the knowledge and skills of our physicians, nurses and staff have been built into it.”

Glenbrook Hospital went live in March 2003, Evanston Hospital followed in June, and Highland Park Hospital is scheduled for December. We’ve followed a staged rollout, implementing the documentation features first, and physician order entry several weeks later. The Epic system has been installed in more than 20 of our physician offices, as well. Affiliated physicians and private practice physicians with privileges in our hospitals will have the opportunity to obtain the Epic system for their offices, if they choose.

“Medical information isn’t produced in a vacuum—doctors and nurses have to be able to use it effectively down the line,” said James T. Perkins, MD, a pathologist and Assistant Professor at Northwestern University’s Feinberg School of Medicine. “Our patients are best served when caregivers have complete, up-to-date information at their fingertips. Electronic medical record systems make sure that’s the case.” ■

The Auxiliary enjoys a great deal of success in community outreach and fundraising, and we continue to look for ways to strengthen our organization and increase our value to Evanston Northwestern Healthcare.

The American Craft Exposition is a perfect example. We always strive to make it better, even though it's already regarded as one of the top craft shows in the United States. (In its annual rankings, the National Association of Independent Artists ranked ACE first in "quality of exhibition," tied with the Smithsonian Craft Show.) This year, we had the opportunity to expose the show to more people by bringing the White House Collection of American Crafts to the area. Some 350 collectors attended the opening party at the Mary and Leigh Block Museum at Northwestern University. Also in attendance were representatives from Christie's, who auctioned a piece of art donated by renowned glass artist Dale Chihuly, raising \$13,500 for breast and ovarian cancer research.

As the show expands, so does the amount of money we're able to raise; this year, ACE raised more than \$325,000. For several years now, we've directed ACE proceeds towards breast cancer research. Last year, we started a \$1 million endowment fund with part of the proceeds. This endowment will provide funds for breast cancer and ovarian cancer research until a cure is found.

The Hospitals' Gala is in the first year of a two-year goal to fund exciting research in the early detection and treatment of macular degeneration, a disease that strikes 200,000 Americans each year and is a leading cause of blindness. Principal investigators are Marian Macsai, MD, Head of the Division of Ophthalmology, and Frank LaFranco, MD, a private practice affiliate of Evanston Northwestern Healthcare. The wonderful evening, held at Baxter headquarters in Deerfield, raised \$375,000.

Another way we touch the future of medicine is through the Auxiliary Research Scholar program. Over the years, many scholarship recipients have gone on to receive major grants from the National Institutes of

Health, and we're so proud to have helped launch their careers. This year's recipient is Dr. Pippa Storey, who is studying MRI research with a primary focus on quantitative methods in cardiac imaging.

Not all our projects are on such a large scale, of course. In April, one of our Board members donated roses, which we distributed to hospitalized patients to brighten their day.

The Auxiliary of Evanston Northwestern Healthcare offers many opportunities to make a difference in our community. I would like to thank our many committed volunteers, and encourage others to join us.

Dana D. Turban

Dana D. Turban, President

The Auxiliary of Evanston Northwestern Healthcare



AUXILIARY PRESIDENT'S REPORT

It is truly amazing that so much can be accomplished in one short year! Construction continues, programs improve, small changes as well as large are everywhere around us. Our community can see how much has been invested in their local hospital, and they appreciate the availability of state-of-the-art health-care right in their neighborhood. We know this, because our membership is strong and growing with the addition of many new, energetic volunteers.

We are very proud to report that the Auxiliary of Highland Park Hospital has once again had a very successful year. In addition to building our membership we have broadened our board, augmenting a few chairs and committees and electing a Special Events Chairman. Our newest member is charged with developing new fundraising opportunities. Her first effort was a "Virtual Event" that, for this year, replaced our annual Ravinia Benefit. We asked those who had given to the Ravinia Benefit in the past to support us again—our many loyal donors responded giving us the most successful fundraiser we've had to date! So far we've raised more than

\$62,000 and the total is still growing.

The Alcove Gift Shop continues to be our largest source of income; we are very proud of the leadership and the many buyers that provide us with a very unique boutique. The coffee shop, which was temporarily hard to find due to construction, is back again with more specials, and, of course, everybody's favorites.

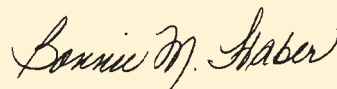
Our efforts to help those in our community who need help caring for themselves continues through Mobile Meals. We also continued our support of the Adult Day Service with \$3,000 from our Remembrance Fund.

Our scholarship program continues to help Hospital employees who wish to continue their educations and become even more valuable to the Highland Park Hospital community. This year our scholarship applicants were so worthy that we gave three instead of our usual two:

- Anna Ogunde (\$1,500) currently works full-time as a patient care assistant in Hoover Transitional Care Center.
- Vladimir Pusara (\$1,000) currently works as an anesthesia assistant, and wishes to become an ultrasound technician.
- Jonathon Egel (\$1,000) has worked as a pharmacy assistant since he was 16 and now will be studying pharmacy at Butler University. He will continue working for us during school breaks.

This has been a great year for the Auxiliary of Highland Park Hospital. We are proud to be able to give a total of \$250,000 this year to be applied toward our Million Dollar Pledge to the programs and services of the Ambulatory Care Center that's slated to open in 2004.

Many of us have enjoyed being able to support and attend the fundraising events hosted by the Auxiliary of Evanston Northwestern Healthcare; they are to be commended for their accomplishments.



Bonnie Haber, President

The Auxiliary of Highland Park Hospital



DURING OUR FISCAL YEAR, OCTOBER 1, 2002 TO SEPTEMBER 30, 2003, GIFTS AND PLEDGES OF MORE THAN \$38 MILLION WERE RECEIVED TO SUPPORT OUR PROGRAMS AND RESEARCH. WE ARE PLEASED TO RECOGNIZE THE FOLLOWING INDIVIDUALS, CORPORATIONS AND FOUNDATIONS FOR THEIR GENEROSITY.

LEGACY SOCIETY

\$5,000,000 AND ABOVE

The Auxiliary of Evanston Northwestern Healthcare
 Mr. and Mrs. William B. Graham
 The Healthcare Foundation of Highland Park
 The Louis Family
 John L. Patten Charitable Trust
 Ruth Cain Ruggles
 Mr. and Mrs. Charles R. Walgreen, Jr.
 The Charles R. Walgreen, Jr. Family

CHAIRMAN'S SOCIETY

\$1,000,000 TO \$4,999,999

Anonymous
 The Allstate Foundation
 The Auxiliary of Highland Park Hospital
 Louis W. Biegler
 Mrs. C. Selma Carton
 Mrs. Elizabeth D. Chinnock
 Ms. Toni Cobb
 Owen L. Coon Foundation
 Warren B. Cozzens
 The Crown and Goodman Families
 Connie and Tom Duckworth
 Stephen J. Frawley Trust
 The Golder Family Foundation
 The Grainger Foundation
 John L. & Helen Kellogg Foundation
 Robert and Myra Kraft Foundation
 Foster G. McGaw Educational Foundation
 Muscular Dystrophy Association / Estate of James T. Guynes
 Parkinson's Disease Research Society
 The Radiation Medicine Institute
 Daniel F. and Ada L. Rice Foundation
 Ralph Robinson Marital Trust
 John G. Searle
 John D. Simms /
 Simms Family Foundation
 Nathan Stagman Trust

PATTEN CIRCLE

\$100,000 TO \$999,999

| | | | |
|--|---|---|--|
| Anonymous | Bank One Corporation | Judson B. Branch | Lucille B. Crowder Trust |
| Abbott Laboratories | Mr. and Mrs. Charles L. Barancik | Mrs. Janet D. Burch | Deerfield State Bank |
| Abbott Laboratories Fund | M. R. Bauer Foundation | Mr. and Mrs. Duane L. Burnham | Delta Foundation |
| Marshall Abraham Family / Ida and Irving Abraham Family Foundation | The Baxter International Foundation | The Butz Foundation | Department of Medicine |
| Dr. and Mrs. John C. Alexander, Jr. | Becton Dickinson and Company | Mr. and Mrs. Wiley N. Caldwell | Department of Obstetrics & Gynecology |
| American Brain Tumor Association | Mr. and Mrs. Marshall Bennett | Dr. and Mrs. Joseph A. Caprini | Department of Pediatrics |
| Mr. Carlyle E. Anderson | Arnie and Ann Berlin | Dr. and Mrs. Terrence S. Carden, Jr. | Department of Surgery |
| Dr. and Mrs. Robert W. Anderson | Berlin Family Fund | John and Brook Carl | Ellerman Family Foundation |
| Elizabeth Wyckoff Anderson Trust | Berner Charitable and Scholarship Foundation | Chapman Charitable Foundation | Donald S. Elrod |
| Aon Corporation | Grace A. Bersted Foundation | Mrs. Walter Cherry | Evanston Northwestern Healthcare Professional Staff |
| Aon Foundation | The Biegler Foundation | Estate of Albert B. Clark | Mr. and Mrs. Richard J. Ferris |
| The Appelbaum Family Foundation | Ms. Ellen Block | Mr. and Mrs. Donald C. Clark | Mr. and Mrs. Eli Field |
| Edith Marie Appleton Trust | Mrs. Florence Boone | Cole Taylor Bank | Fort James Foundation |
| Associates in Anesthesia | Charles H. & Bertha L. Boothroyd Foundation | Sylvia McElin Corrigan | Enoch A. Frederick Estate |
| Charlene and Bob Baizer | The Edwin J. Brach Foundation | Cotter & Company | Freed Family Foundation |
| | | Dr. and Mrs. Arthur R. Crampton | Mr. and Mrs. James L. Garard, Jr. >> |
| | | Mr. and Mrs. John W. Croghan | |

>> PATTEN CIRCLE \$100,000 TO \$999,999

The Carol Gollob Foundation for Breast Cancer Research
 Marvin E. Gollob Family Grant Healthcare Foundation
 Mr. George W. Grant
 John D. Gray Family
 Mr. and Mrs. John C. Harris
 Harris Associates, L.P.
 The Irving Harris Foundation
 Mrs. Irvin H. Hartman, Jr.
 Mrs. Sibyl A. Heide
 Mrs. Robert A. Hennessy
 Mr. Maurice D. Henery
 The Hillebrand Family
 Mrs. H. Earl Hoover
 Mr. and Mrs. Richard T. Hough
 Helen E. Hough Charitable Trust
 Household International
 Huss Foundation
 Mrs. Robert C. Hyndman
 Illinois Tool Works Foundation
 Dr. and Mrs. David M. Ingall
 Estate of Archer L. Jackson
 The Oliver A. Jahn Trust
 Mrs. Harold James
 Johnson & Johnson
 A. D. Johnson Foundation
 S C Johnson Wax
 Mr. and Mrs. Wayne J. Johnson
 Jordan Industries, Inc.
 Junior Board of Highland Park Hospital
 Mr. Roy F. Kehl
 Mr. Samuel Kersten

Ms. Denyse C. King
 Mrs. Helen P. Kirkpatrick
 Mr. and Mrs. Harry M. Jansen
 Kraemer, Jr.
 Kraft Foods
 The Kresge Foundation
 Mrs. Honey Kugler-Olin
 Dr. and Mrs. Richard H. Larson
 Mr. and Mrs. M. James Leider
 J.D. & Iva Leiper Trust
 Mr. and Mrs. Joseph Levy, Jr.
 Alfred J. Lilienfeld Trust
 Etta Lilienfeld Trust
 Mr. and Mrs. Homer J. Livingston, Jr.
 Mrs. Allan M. Loeb
 March of Dimes
 Mr. and Mrs. S. Edward Marder
 Mr. and Mrs. Miles L. Marsh
 Mrs. Joan Kowing McGregor and Mr. Clyde S. McGregor
 Medline Industries, Inc.
 Mr. and Mrs. Samuel M. Menco
 Mr. Robert B. Merrifield
 Mr. Stephen K. Michael
 Dr. Charles A. and Joan Mudd
 Mrs. Thomas R. Mulroy
 Mrs. Deanette Murdough
 Mark R. and Susan C. Neaman
 Northern Trust
 Leo J. O'Grady Family Trust
 Emily O'Grady Trust
 I.A. O'Shaughnessy Foundation/
 Mrs. J. Garrett Lyman

Lucille Olshansky Estate
 Edmond and Alice Opler Foundation
 Mrs. Kenneth Ozmun
 Pathology & Nuclear Medicine Associates, S.C.
 James A. and Amanda L. Patten Charitable Trust
 May Patterson Charitable Trust
 Mr. Thomas Patton
 Frank E. & Seba B. Payne Foundation
 Mr. and Mrs. Jerry K. Pearlman
 Mrs. Harold Perlman
 Miss Maxine R. Philipsborn
 Mr. and Mrs. Thomas Pick
 Dr. and Mrs. Ronald B. Port
 Lucile B. Priess Estate
 Prince Charitable Trusts
 Ravinia Associates in Internal Medicine, Ltd.
 The Retirement Research Foundation
 Rena B. Robinson
 Ross Laboratories
 Mrs. A. Frank Rothschild
 Dr. Richard and Carolyn Santee
 Dr. Scholl Foundation
 The Seabury Foundation
 D. C. Searle
 G. D. Searle & Company
 Searle Family Trust
 ServiceMaster
 Fred B. Snite Foundation

Solo Cup Foundation
 The Staubitz Family Charitable Trust
 Mr. and Mrs. Neele E. Stearns, Jr.
 Dr. and Mrs. Paul Sternberg
 Mr. Howard L. Storch
 Tillie T. Straub Charitable Foundation
 Structured Settlement Trust
 The Gertrude & Walter Swanson, Jr. Foundation
 Mr. and Mrs. Morton Teitelbaum
 Mr. J. Mikesell Thomas
 Mrs. Jane Patten Thompson
 Mr. and Mrs. Raymond C. Tower
 Chester D. Tripp Charitable Trust
 Walgreen Company
 Mr. and Mrs. John R. Walter
 A. Montgomery Ward Foundation
 C.O. Waters Trust
 Mr. and Mrs. Elmer H. Wavering
 The Herbert C. Wenske Foundation
 W.P. & H.B. White Foundation
 Rachel B. Williams Foundation
 The Winona Corporation
 Women Helping Women
 Wyeth-Ayerst Laboratories
 Bud and Dorothy Zeman Foundation

The Legacy Society, Chairman's Society and Patten Circle recognize cumulative lifetime giving.



“Of all the fine organizations and institutions that are deserving of and in need of support, Evanston Northwestern Healthcare is at the top of my list. Quality healthcare is one of the greatest assets a community can have. It's not just having a hospital nearby, it's having the kind of institution and caliber of physicians and leadership that can provide the best and most relevant care. The collaboration and partnership between Evanston Northwestern Healthcare and Northwestern University and its medical school is an invaluable asset and adds to the value of these leading institutions.”

John R. Walter

A dedicated philanthropist and member of the Board of Directors, John Walter is leading the Evanston Northwestern Healthcare fundraising effort.

THE DR. LOUIS W. SAUER SOCIETY

GIFTS OF \$10,000 TO \$99,999

Anonymous
 ABM Charitable Trust
 Mr. and Mrs. Hall Adams, Jr.
 American Parkinson's Disease
 Association
 Amgen Inc.
 Aventis Pharmaceuticals Inc.
 Bank One Foundation
 Modestus Bauer Foundation
 Mr. and Mrs. Jules F. Bernard
 Blum-Kovler Foundation
 CFDA Foundation
 The Chicago Title and Trust Co.
 Foundation
 Mr. and Mrs. Thomas R. Clark
 Crate and Barrel
 Deloitte Consulting

Mr. and Mrs. Richard U. DeSchutter
 Fujisawa Research Institute of
 America, Inc.
 Gemini Foundation
 The Victoria Gold Family
 Grainger, Inc.
 Maurice R. & Meta G. Gross
 Foundation
 Tim & Tom Gullikson Foundation
 Hendrickson Family Foundation
 Dr. Laurie and Mr. Andrew Hochberg
 Barbara P. Hochberg Estate
 Mr. and Mrs. Lawrence Howe
 International Technidyne
 Corporation
 Carol M. Jacobsohn
 Dr. and Mrs. Janardan D. Khandekar

LaSalle National Bank
 Levy Security Corporation
 Mr. and Mrs. James G. Maynard
 Mr. William A. McIntosh
 Medtronic Foundation
 Morgan Stanley
 Northwestern University
 Mr. and Mrs. Guy W. Powell
 Power Construction Company, Inc.
 Mr. and Mrs. Jay Pritzker
 J.B. & M.K. Pritzker Family
 Foundation
 John Rau
 Mr. and Mrs. Edward I. Rothschild
 Saks Fifth Avenue
 Mrs. Gertrude Salzenstein
 Sanofi-Synthelabo Inc.

Mr. and Mrs. James L. Scott
 Shirley Stutz Estate
 Mr. and Mrs. Jerome Targun
 Targun Plastic Company
 Mr. John W. Taylor
 Mr. and Mrs. John W. Taylor III
 US Bank
 Eleanor P. Voysey Trust
 The Warwick Foundation
 Washington Square Health
 Foundation
 Whistler Foundation
 Mr. and Mrs. William J. White
 Mr. William Wrigley, Jr.
 Wyeth Ayerst Pharmaceuticals

THE DR. FREDERICK CHRISTOPHER SOCIETY

GIFTS OF \$5,000 TO \$9,999

Advanced Prostate Cancer Research
 Mr. and Mrs. William F. Aldinger
 Allstate Insurance Company
 Astra Zeneca
 Mr. and Mrs. Donald N. Basler
 Mr. and Mrs. Glenn I. Becker
 Mrs. Donald W. Campbell
 Mr. and Mrs. David L. Canmann, Sr.
 Dr. and Mrs. Michael S. Caplan
 Cardinal Health Systems
 The Chicago Curling Club
 Mr. and Mrs. Edward S. Donnell
 Mr. and Mrs. Peter L. Dyson
 Eckenhoff Saunders Architects Inc.
 George M. Eisenberg Foundation
 For Charities
 Mr. and Mrs. Robert E. Flynn
 Mr. and Mrs. Harold E. Foreman, Jr.
 Dr. and Mrs. Paul D. Goldstein
 Ms. Ilene S. Gordon and
 Mr. Abram Bluestein

Gramm Family Foundation
 John Groppa Memorial Fund
 Mr. and Mrs. John A. Hagenah
 Mr. and Mrs. William J. Hagenah III
 Harken Foundation
 Harris Family Foundation
 Mr. Robert E. Heiberger
 Armin & Esther Hirsch Foundation
 Mr. and Mrs. Thomas H. Hodges
 The H. Earl Hoover Foundation
 Illinois Tool Works, Inc.
 ING Aetna
 Jamerson & Bauwens Electrical
 Contractors
 Ms. Betty M. Kahn
 The Kensington Square Foundation
 Dr. and Mrs. William D. Kerr
 Mr. and Mrs. Lester B. Knight III
 Mr. and Mrs. Daniel C. Kriser
 Estate of Dora Krueger
 The Marvin and Kay Lichtman
 Foundation
 Loebel, Schlossman and Hackl
 Dr. Marian S. Macsai and
 Mr. Jack S. Kaplan
 Mrs. Olive D. Madigan
 Marsh USA, Inc.
 Mayer, Brown, Rowe & Maw
 McBreen, Kopko, McKay and Nora

Mrs. Wayne A. McCoy
 Mr. and Mrs. Harvey N. Medvin
 Mesirow Stein Real Estate
 Dr. and Mrs. Frederick E. Miller
 Mr. and Mrs. Terry F. Moritz
 Christine Myers
 Gertrude B. Nielsen Charitable
 Trust
 Mr. and Mrs. William W. Nugent
 Mr. and Mrs. James J. O'Connor
 Mr. and Mrs. William A. Osborn
 Mr. and Mrs. Monroe J. Passis
 The Pattis Family Foundation
 Pepper Companies, Inc.
 Mrs. Mary F. Reynolds
 Roberts Family Foundation
 Ms. Ellen A. Rudnick and
 Mr. Paul W. Earle
 Mr. and Mrs. Robert E. Sargent
 Schering-Plough Corporation
 Mrs. Dorothy Schnadig
 Dr. and Mrs. Leopold G. Selker
 Mr. and Mrs. John G. Sickle
 Sigvaris, Inc.
 Rich and Sara Silver
 Mr. and Mrs. Marc S. Simon
 Mr. and Mrs. Martin J. Spalding
 Standard Parking
 Mr. Richard A. Stein

W. Clement & Jessie V. Stone
 Foundation
 Superior Ambulance Service
 Pam and Joseph Szokol
 The Carl & Marilyn Thoma
 Foundation
 Mr. and Mrs. Robert Thurston
 Mr. and Mrs. Daniel R. Toll
 Chicago Tribune
 United Conveyor Foundation
 Yacktmann Family Foundation

DRS. WILLIAM C. AND DAVID N. DANFORTH SOCIETY

GIFTS OF \$2,500 TO \$4,999

Mr. and Mrs. Milton L. Abramson
Mr. and Mrs. David B. Anderson
Aramark Management Services, L.P.
Astra Zeneca LP
Mr. and Mrs. Henry Berghoef
Dr. and Mrs. Ira J. Bernstein
Mr. and Mrs. Charles W. Bidwill, Jr.
Mr. and Mrs. Kenneth L. Block
Mr. and Mrs. George H. Bodeen
Ms. Marina S. Bozilenko
Cancer Comfort Foundation
Country's Harvest
Ms. Debora M. de Hoyos and Mr.
Walter C. Carlson
Mr. and Mrs. E. Paul Dunn
The Fraida Foundation
Eugene Freedman Family
Foundation
Mr. and Mrs. Jeffrey L. Fried

Mrs. Edith Gamson
Gapers Caterers
Ms. Nancy A. Gordon
Drs. James and Jacqueline Grober
Mr. and Mrs. Scott L. Hanson
Mr. and Mrs. Ryan D. Harris
Denis and Sondra Healy/
Turtle Wax, Inc.
Arthur W. Hill Foundation
Mr. and Mrs. Floyd G. Hoffman
Mr. and Mrs. Arthur Holden
Dr. and Mrs. Dipak C. Jain
Kemper Foundation
Mr. and Mrs. Granger F. Kenly, Sr.
Mr. and Mrs. Richard L. Keyser
Dr. and Mrs. R. G. Krishnamurthy
Sheldon L. & Pearl R. Leibowitz
Foundation
R. A. Lenon

Mr. Raymond A. Luth
Mr. Aaron Macsai and
Ms. Marilyn Davis
Mrs. Robert E. Maher
Maloney Family Foundation
Mr. and Mrs. David B. Mathis
McMaster-Carr Supply Company
Medtronic Corporate Giving
Program
Midwest Anesthesiologists
Mr. and Mrs. John D. Nichols
Mary S. O'Brien
Mr. and Mrs. Stephen Opert
Orren Pickell Designers & Builders
Pearle Vision Foundation
Mr. and Mrs. Jeffrey L. Perlmutter
Henry Pope Foundation
Mrs. Donald L. Porth
The Pride Capital Group, LLC

Mr. and Mrs. John Raitt
Mr. Phillip Raskin
Mr. and Mrs. Alfred M. Rogers, Jr.
Mr. and Mrs. John A. Sheridan
Shiffman Family Foundation
Mr. and Mrs. Ronald G. Spaeth
Mr. and Mrs. Dudley R. Sullivan Jr.
Swanson, Martin & Bell
Mr. and Mrs. Thomas F. Tobin
Mr. and Mrs. Richard P. Toft
Mr. and Mrs. Scott D. Turban
Dr. and Mrs. Thomas A. Victor
Vernon and Marcia Wagner
Charitable Trust
Mr. and Mrs. Jonathan P. Ward
Mr. and Mrs. H. Thomas Watkins
Dr. and Mrs. Ira W. Weiss
Mr. and Mrs. Robert F. White, Jr.
Mr. and Mrs. Harvey Yellen

THE LILY PARKER STACEY SOCIETY

GIFTS OF \$1,000 TO \$2,499

Anonymous
Abcomm, Inc.
Acorn Corrugated Box Company
Dr. M. Abby and
Mr. Stephen Adams
Dr. and Mrs. Richard L. Adis
Mr. Allan B. Afterman
Mr. and Mrs. Keith E. Alessi
Dr. Joseph T. Alleva
Alpha Phi Foundation
Alpha Phi Northwest Suburban
Chapter
J. Trent and Judith Anderson
Mr. and Mrs. Alan B. Anixter
Mr. Jonathan D. Appelbaum
Mr. and Mrs. Robert D. Appelbaum
Associates in Gynecological Surgery
and Obstetrics
Mr. and Mrs. Robert H. Bacon, Jr.
Mr. and Mrs. Lyle Banks
Dr. William C. Banzhaf and
Dr. Cathy J. Tschannen
The Barr Fund
Mr. and Mrs. Howard R. Barron
The Alvin H. Baum Family Fund
Dr. Dorie and Mr. Michael Becker
Mr. Robert Bedows
Mr. and Mrs. Alan H. Begoun
Mrs. Alice R. Behrstock
Mr. and Mrs. Stephen S. Beitler
Benjamin Kende Photography, Inc.
Mrs. Arthur J. Bernardi
Mr. and Mrs. Howard B. Bernick
William Blair & Company
Foundation
Mr. and Mrs. John A. Blanchard
Mr. and Mrs. James R. Boris
Mr. and Mrs. James A. Bovaird III
Mr. and Mrs. John M. Brannigan
Mr. and Mrs. Kenneth A. Bro
Mrs. Gisela M. Brodin-Brosnan

Mr. and Mrs. Edwin S. Brown
Bruce Foundation
Dean L. and Rosemarie Buntrock
Foundation
Bob and Lynn Burt
Mr. and Mrs. Thomas R. Butler
Scott Byron & Company
C and B Trading
Samuel and Ida Cardone
Cassiday, Schade & Gloor
Dr. Hoyee Chan
Barbara, Patricia & Richard Cohn
Family Foundation
Mrs. Clarence L. Coleman
Mr. and Mrs. John C. Colman
Mrs. Susan L. Colten
Mr. and Mrs. Miles J. Cooperman
Cozad Family Foundation
Mr. and Mrs. Ronald E. Cramer
Dr. and Mrs. David W. Cromer
Mr. and Mrs. Ronald L. Cullum
Mr. and Mrs. Kent Dauten
Mr. and Mrs. William L. Davis III
Mr. and Mrs. John E. Deimel
Dr. and Mrs. Jorge del Castillo
Dickerson Engineering, Inc.
Mr. Peter Di Pietro
Herman and Lillian Director
Foundation
Dr. and Mrs. James C. Dohnal
Ms. Patricia Dolan
Mr. and Mrs. Arthur Dole III
Mrs. Kenneth H. Eckholt
Mr. Stuart H. Ellison
Dr. Carol Ellman
Ms. Elizabeth J. Ellrodt and
Mr. Scott C. Schweighauser
Engelman Family Charitable Trust
Mr. Mark Etheridge
Mr. and Mrs. Gordon H. Ewen
Mrs. Irina Fiks

Dr. and Mrs. John J. Flaherty
Dr. Betsy Forbes and
Mr. Steve Hansen
Mr. and Mrs. Frederick S. Fox
Franklin Philanthropic Foundation
Mr. and Mrs. Gerald Freeman
Ms. Susan Frissel
Mrs. Donald Frissell
The Frye Foundation
Mr. and Mrs. Gerald Gallagher
Dr. and Mrs. Allen R. Gardner
Dr. and Mrs. Thomas Gardner
Dr. Timothy Garvey
Gerald Norton Memorial
Corporation
Mr. and Mrs. Bruce V. Giangiorgi
Mrs. Willard Gidwitz
Dr. and Mrs. Hugh C. Gilbert
Mr. and Mrs. Richard I. Gilford
Mr. and Mrs. Burton Glazov
Mr. and Mrs. William J. Glickauf, Jr.
Dr. and Mrs. Joseph Golbus
Mrs. Robert H. Goldberg
The Goldring Foundation
Mr. and Mrs. Bruce K. Goodman
Mr. Morris Goodman
Mr. and Mrs. Frank Woods
Gordon II
Marvin & Elaine Gottlieb Family
Foundation
Mr. Raymond Grady
Mr. and Mrs. Robert J. Grasty
Mr. and Mrs. Benjamin Greene
Mrs. Paul W. Guenzel
Joseph and Sheila Gutman Family
Foundation
Mr. and Mrs. Richard H. Gutstadt
Mr. and Mrs. Joel A. Haber
Mr. and Mrs. William J. Hagenah, Jr.
William M. Hales Foundation
Drs. Curtis and Mary Hall

Handelsman Family Foundation
Mr. and Mrs. John M. Hands
Dr. and Mrs. Scott M. Hansfield
Hartmarx Charitable Foundation
Healthcom Partners
Dr. Karyn and Mr. Eric Herndon
Mr. and Mrs. Jeffrey H. Hillebrand
Hinshaw & Culbertson
Mr. Jerome H. Hirschmann
Dr. and Mrs. Richard A. Hirschmann
Mr. and Mrs. Warren R. Hoensheid
Mr. and Mrs. Eugene Holland, Jr.
Mr. and Mrs. Robert J. Holleb
Hollister Incorporated
Drs. Linda and John Holt
Mrs. Michele J. Hooper and
Mr. Lemuel Seabrook
Mr. and Mrs. R. C. Hudson, Jr.
Dr. Theresa and Mr. David Hughes
Mr. and Mrs. D. R. Hughey
Mr. Lewis Ingall
The Ingersoll Foundation
Integrated Facilities Solutions, Inc.
The Jaharis Family Foundation, Inc.
Dr. and Mrs. Warren C. Jenkins
JMJ Foundation
Mr. and Mrs. Charles L. Johnson
Mr. Lawrence Johnson
Johnson & Bell, Ltd.
Dr. and Mrs. Gregory K. Jones
Mr. and Mrs. Harry L. Jones, Jr.
Ms. Nancy L. Jones
Dr. Susan and Mr. David Kalt
Katten Muchin Zavis Foundation
Mr. and Mrs. Gilbert J. Katz
Dr. and Mrs. Thomas C. Keeler
Keller Group, Inc.
Mr. and Mrs. Peter O. Kelly
Mr. and Mrs. Patrick Kennedy
Mr. and Mrs. H. Barnard King
Mr. and Mrs. James D. King

“Evanston Hospital has served three generations of our family. These were not happy stories, but the care was outstanding. My husband and I always felt it was important to give back to the community. We were particularly impressed with Dr. Nicholas Vick and we were most grateful for the way he took care of not only my husband (Stanley C. Golder), but of me and my family. Our family has derived a great deal of satisfaction from knowing that we can help those who have the knowledge to help others.”

—
Joan Golder

The Golder family has generously supported neonatal research directed by Dr. Michael Caplan following the death of their infant granddaughter, and most recently endowed the Stanley C. Golder Chair of Neuroscience Research.



Mr. and Mrs. Alexander Knowles
Mr. Thomas H. Konsoer
Ms. Rachel E. Kraft
Dr. and Mrs. Harold J. Krinsky
Selwyn A. Kudisch
Dr. and Mrs. David Kuo
Mrs. E. Stephen Kurtides
LA-CO Industries, Inc.
Mr. Michael J. LaFontaine
Dr. and Mrs. Frank P. LaFranco
Mr. and Mrs. Randall W. Larrimore
Mr. and Mrs. Daniel J. LaVista
Ms. Judy K. Lawrence
Mr. Terence M. Leahy
Mr. Daniel Levin
Mr. and Mrs. Robert M. Levy
Mr. and Mrs. Frank M. Lieber
Ms. Kay Litherland
Virginia W. Little Trust
Mr. and Mrs. Herbert Loeb
Mr. Richard I. Loewenstein
Mr. and Mrs. Richard J. Loewenthal, Jr.
Drs. Patrick and Regina Logan
Elizabeth and Jeff Louis Foundation
Kimberly C. Louis Stewart Foundation
Mr. and Mrs. David C. Loveland
Mr. and Mrs. Louis G. Lower II
Mr. and Mrs. George C. Lyman, Jr.
Drs. Scott and Mary MacGregor
Mrs. Evelyn M. Marshall
Ms. Catherine S. Mathis
Mr. and Mrs. Fredrick Mayer
McCarthy and Associates
Ms. Marilyn McCoy and
Mr. Charles R. Thomas
Dr. and Mrs. James Strand
McCulloch
John H. & Ann E. McDermott
Foundation
Dr. and Mrs. Timothy J. McDonough

Dr. and Mrs. John P. McGee
Mr. and Mrs. Benjamin McKnight
Mr. and Mrs. Alan G. McNally
Mr. and Mrs. Hugo J. Melvoin
Mesirow Family Charitable
Foundation
Mr. and Mrs. A. Gerson Miller
Dr. and Mrs. Harry Johnson Miller
Mr. and Mrs. Lawrence R. Miller
Dr. and Mrs. Ronald W. Miller
Mr. and Mrs. Herbert J. Miner II
Mr. Charles Moore and
Mrs. Nancy Moran Moore
Moore Landscape, Inc.
Mr. and Mrs. David Moscow
Dr. and Mrs. E. Dennis Murphy
Mr. and Mrs. Mark P. Nahin
Mr. and Mrs. Kenneth Nebenzahl
Dr. and Mrs. Kenneth J. Nelson
New Prospect Foundation
Todd and Lori Newberger
Mr. and Mrs. Edward J. Noha
Northshore Women's Health
Associates, S.C.
Mr. and Mrs. Nick Noyes
Mr. and Mrs. David R. Olejniczak
Open Hearts for Retarded Children
Mr. and Mrs. Richard D. Ostrow
Dr. Barbara and Mr. Frank Parilla
Dr. and Mrs. Clayton A. Peimer
Mr. and Mrs. Jerry Pekow
Mr. and Mrs. Donald S. Perkins
Mrs. Maurice Petersen
Mr. and Mrs. Ellard Pfaelzer, Jr.
Mr. Peter Pfister
Mrs. Barbara Pollack
Dr. S. G. Prasad
Mr. Richard Prior
Ravgen, Inc.
Dr. and Mrs. Howard M. Rice
Mr. and Mrs. John M. Richman
Dr. and Mrs. William J. Robb

Mr. Warner A. Rosenthal
Mrs. Edith Roskam
Mr. and Mrs. Fred A. Rotenberg
Mr. and Mrs. Donald I. Roth
Mr. and Mrs. Edward F. Ruberry
Dr. and Mrs. Myron E. Rubnitz
Mrs. Eleanor S. Rusnak
Russell Reynolds Assoc., Inc.
Mrs. Ruth K. Sadkin
Santucci Family Foundation
Mr. and Mrs. Phillip Schencker
Mr. and Mrs. John I. Schlossman
Mr. and Mrs. Barry Schreiberstein
Mr. and Mrs. Harold D. Schwartz
Mr. and Mrs. Mark Schwartz
Dr. and Mrs. Ronald A. Semerdjian
Dr. and Mrs. Stephen F. Sener
Mr. and Mrs. Bernard F. Sergesketter
Mr. Robert W. Sharp
Mr. and Mrs. D.J. Shinkle
Dr. and Mrs. John S. Sholl
Sidley Austin Brown & Wood LLP
Mr. and Mrs. Joe W. Silverman
Mr. Douglas M. Silverstein
Dr. and Mrs. Norman M. Simon
Mr. and Mrs. Samuel K. Skinner
Mr. and Mrs. James E. Sloan
Mr. and Mrs. Thomas W. Smith
Dr. Edwin J. Smolevitz and
Dr. Rhonda Stein
Mr. and Mrs. Martin H. Snitzer
Mr. and Mrs. John Snow
Ms. Margene Snyder
Dr. and Mrs. Milton LeRoy Sprang
Dr. and Mrs. Harry Staffileno Jr.
Virginia W. Staub Trust
Mr. and Mrs. Harrison I. Steans
Mr. and Mrs. Avy H. Stein
Mr. Marc Stetz
Jerome H. Stone Family
Foundation

Suemaour Exploration I, Ltd.
Dr. and Mrs. Howard J. Sweeney
Takiff Family Foundation
Dr. Justina L. Tanhecho
Ruth and Vernon Taylor Foundation
Dr. and Mrs. Charles A. Thorsen
Mr. and Mrs. Richard W. Tinberg
The Howard J. & Paula M. Trienens
Foundation
Tully Family Foundation
Mr. and Mrs. Gene Turban
Mr. and Mrs. William S. Turner
Drs. Sean and Coleen Tutton
Mr. and Mrs. Selwyn Unell
United Stationers Foundation
USFreightways Corporation
Dr. and Mrs. Jorge A. Valle
Bob and Cheri VanderWeide
Foundation
Dr. and Mrs. Jeffery S. Vender
Dr. and Mrs. Nicholas A. Vick
Viewpoint Leather Works
Mr. and Mrs. Michael Vreeland
Mr. Frederick W. Wackerle
Mr. and Mrs. Frederick H. Waddell
Mr. and Mrs. Robert P. Walker
Mr. Rob Walker
Ms. Suzanne E. Wallace
Mr. and Mrs. Edward S. Weil, Jr.
Mr. Joseph M. Weil
Mr. and Mrs. Lou Weisbach
Mr. and Mrs. Gary E. Weiss
Mrs. George Westerman
Mrs. William T. White, Jr.
Mr. Richard F. Wile
Mr. and Mrs. Richard M. Woldenberg
Mr. and Mrs. Arnold R. Wolff
Mr. and Mrs. Peter H. Wood
Mr. and Mrs. Thomas Wood
Xelan Foundation

ADDITIONAL GIFTS RECEIVED

\$500 TO \$999

| | | | |
|--|---|---|---|
| <p>ABN AMRO Services Company Mr. Henry Abraham Dr. Lisa and Mr. Irwin Abrams Mrs. Gordon Adamson Amalgamated Bank of Chicago American Mediconnect, Inc. Mr. and Mrs. Michael E. Anderson Mrs. William N. Anspach Mrs. Patricia C. Ashbrook Mr. Richard W. Ashley Mr. and Mrs. Bruce B. Bachmann Mr. and Mrs. John S. Bakalar Mr. and Mrs. William S. Baker Mr. and Mrs. Robert J. Balsley, Jr. Mr. and Mrs. Joseph L. Baughman Dr. and Mrs. Michael D. Benson Mr. and Mrs. D. Theodore Berghorst Mr. and Mrs. David W. Bernauer Drs. Lawrence and Alice Bernstein Mr. and Mrs. Dana Bertogli Mr. and Mrs. Bartolomeo Biondi Ms. Linda S. Blackledge and Mr. Bry Schroeder Mr. and Mrs. Kent Bostick Mr. and Mrs. Edward J. Bradley, Jr. Mr. and Mrs. William E. Bronner Mrs. Jody L. Brown and Family Dr. and Mrs. Steven V. Brown Mrs. Henry C. Buckingham Mr. and Mrs. Thomas W. Buckman Mr. and Mrs. Lawrence M. Buescher Mrs. Robert H. Burnside Dr. and Mrs. Richard C. Burnstine Mr. Conway C. Burton Cardinal Law Group Carnow Family Foundation Mr. and Mrs. L. Roger Casty Drs. Jean and Michael Cavanaugh Mr. and Mrs. Aaron D. Charfoos Mr. Carter Cheng Mr. and Mrs. Robert Chodos Linda and David Clark Mr. and Mrs. Chris Coffin Ms. Nancy Zadek Cohrs Anne L. Colette Comtech Telecommunications Corp. Mr. and Mrs. Daniel Cummings Mr. and Mrs. Lawrence D. Damron Mr. and Mrs. Jeffrey Danoff Mr. and Mrs. James E. Daverman Richard & Rosalie C. Davison Foundation, Inc. Deloitte & Touche, LLP Department of Anesthesiology William DeWoskin & Associates Dr. and Mrs. Leon H. Dragon Mr. and Mrs. James M. Dubin Edward R. James Homes, LLC Eierman Foundation, Inc. Dr. and Mrs. Miledones N. Eliades Mr. and Mrs. David Ellis Mr. and Mrs. Herbert P. Emmerman Mr. and Mrs. Howard S. Engle Evanston Northwestern Healthcare Telecommunications Dr. and Mrs. Joseph L. Feldman Mr. David S. Felsenthal Mrs. David Ferguson Mrs. Laura K. Fisher Ms. Joan L. Flashner Mr. and Mrs. Donald F. Flynn Mr. Frank B. Foster</p> | <p>Mrs. Betty S. Frank Mr. and Mrs. Willard G. Fraumann Mr. and Mrs. A. Norman Freeman Mr. and Mrs. Robert S. Fremont Mr. and Mrs. Leonard D. Frescoln Mr. and Mrs. Albert M. Friedman Dr. and Mrs. Alan B. Frydman Dr. and Mrs. Tony S. Fu Dr. and Mrs. Jorge Galante Mr. and Mrs. J. Patrick Gallagher, Jr. Mrs. Kathleen Garstecki Mr. and Mrs. Henry Gaud Ms. Mary Ann Gawalek Mr. and Mrs. Raymond I. Geraldson, Jr. Mr. and Mrs. Steven R. Gerbel Mr. and Mrs. Philip L. Gershman Mr. and Mrs. C. G. Gerst Mr. and Mrs. George Gilmore GlaxoSmithKline Mr. and Mrs. Dennis K. Goldman Mr. and Mrs. Thomas L. Goodman Mr. and Mrs. Warren Y. Gore Mr. and Mrs. Michael Grossman Mr. and Mrs. Charles R. Hall Mr. and Mrs. Stuart Hamilton Mr. and Mrs. Lawrence J. Hanson Mr. Frederick P. Harnstrom Mr. Timothy C. Harris Dr. and Mrs. Paul J. Hauser Mrs. James H. Heald Betty Ann Heitmann Dr. and Mrs. Frederick C. Hess Dr. and Mrs. Emmet Hirsch Robert and Norma Hoaglund Dr. and Mrs. James M. Holland Jeanette C. Hollander Living Trust Mr. Frank B. Hubachek, Jr. Mrs. Sandra R. Hubbard Dr. Thomas H. Hudgins Ideal Anesthesia Services, PC Illinois Bone and Joint Institute, Ltd. Mr. and Mrs. Edward James Mr. and Mrs. Kenneth J. James Mr. and Mrs. Howard E. Jessen Mr. and Mrs. Garrett B. Johnson Ms. Patricia M. Johnson Mr. and Mrs. Jay B. Johnston Mrs. Dorothy S. Jones JSAS Services Inc. Mr. David Kabiller Kahnweiler Family Foundation Mrs. Jean Karger Mr. and Mrs. Thomas Karr Mrs. Gloria Kase Rev. John C. Katonah The Kellcie Fund Mr. and Mrs. William P. Kelly Mr. and Mrs. Donald H. Kennedy Mrs. David B. Kingwill Karl Knauz Motors, Inc. Mr. and Mrs. Philip Kotler Mrs. Lorraine R. Krucks Mr. William N. Krucks Mr. and Mrs. Larry Kugler Mr. and Mrs. Robert G. Lane Mrs. Natalie S. Lebow Anne P. Lederer Research Institute Mr. and Mrs. Stuart P. Levine Monte and Sophie Levinson Lieberman and Associates Mr. and Mrs. Robert R. Lipsky Mr. and Mrs. Richard Lipton Mr. and Mrs. Arthur Liverant</p> | <p>Ms. Danna Liverant Mrs. Gayle R. Lorimer Mr. and Mrs. James D. Lyons Bonnie and Jay Lytle Ms. Gwen Macsai and Mr. Paul Goren Mr. and Mrs. Thomas A. Mann Mrs. Carol S. Marks Mr. and Mrs. Irl H. Marshall, Jr. Mr. and Mrs. Henry E. Mawicke Mr. and Mrs. Robert W. Maxwell, Jr. Mr. and Mrs. Archibald McClure Mr. and Mrs. John V. McClure Mr. and Mrs. Arthur J. McGivern Mr. and Mrs. Edward C. McNally Dr. and Mrs. Douglas E. Merkel Merrill Lynch & Co. Foundation, Inc. Mr. and Mrs. Richard J. Metzler Mr. and Mrs. John A. Miller Ms. Marsha J. Miller and Mr. Steve Birchard Mr. Maurice J. Miller Mr. and Mrs. Philip K. Miller Mr. and Mrs. Milton Minkin Dr. and Mrs. K. William Mopper Mr. and Mrs. Thomas F. Moran Mr. and Mrs. Daniel M. Morris Morrow Charitable Trust Dr. Kevin W. Nash and Dr. Claudia A. Peano Nathan Liverant and Son, LLC National Cement Company Mr. Robert S. Nellis Ms. Susan K. Nelson Dr. and Mrs. Bruce E. Noxon Mr. and Mrs. Mark A. Nystuen Mr. and Mrs. Joseph O'Callaghan Mr. and Mrs. Dennis B. O'Malley Oil and Gas Properties, Ltd. Mr. and Mrs. Norman Olson Ms. Diana L. Packman Dr. and Mrs. Gregory R. Palutis Pan Pasta, Inc. DBA Gusto Ristorante Mr. and Mrs. John Patience Mrs. William J. Pavey Mr. and Mrs. Henry Pearson Mr. E. Scott Peterson and Ms. Judith M. Desenis Mr. Robert J. Piros Mr. and Mrs. Edward J. Polen Ms. Gail M. Polzin Mr. Thomas S. Postek Mr. and Mrs. Jerome R. Prassas Mr. Patrick L. Price and Mr. Daniel P. Hartmann The Private Bank and Trust Company Mrs. Martha A. Purky Mrs. Avis Redwine Mr. James M. Renneker Mr. and Mrs. Gary A. Resnick Mr. Michael D. Rice Ms. Patricia Rice-Rosen Dr. Rebecca F. Rock and Mr. Jeffrey Yun Dr. and Mrs. Todd Rosengart Mr. and Mrs. Irwin Ross Mr. and Mrs. Jeffrey S. Ross Ms. Valerie M. Rothschild Mr. and Mrs. Howard Rubenstein Mrs. Dorothy S. Ruderman Mr. and Mrs. Sidney G. Saltz</p> | <p>Sam's Club Mr. and Mrs. Alan R. Samsky S. Santhanam Mr. and Mrs. Robert M. Sarnoff Saville Flowers, Inc. Mr. and Mrs. John S. Schauer Mr. and Mrs. Neal B. Schneider Mr. and Mrs. Allen J. Schonwald Mrs. Virginia Schulte Theodore G. Schwartz Family Foundation Mr. John H. Scott Mr. and Mrs. Richard L. Sevcik Seyfarth, Shaw, Fairweather & Geraldson Mr. and Mrs. Leo J. Shapiro Mr. and Mrs. Murray E. Shepard Dr. Daniel H. Shevrin and Ms. Carol S. Silverman Mr. and Mrs. Roger A. Shiffman Mr. and Mrs. Charles F. Small, Jr. Mr. and Mrs. Elliott Snyder Mr. and Mrs. David A. Spinney Springfield Service Corporation Ms. Adine S. Stayman Mr. and Mrs. Leonard Stein Mr. Dick A. Stoken Mr. and Mrs. Howard L. Stone Mr. and Mrs. Loren Stone Ms. Janet Sullivan and Mr. Dennis Creaney Supera Family Foundation Mr. Vern Swanson Mr. and Mrs. Emanuel Tabachnik Mrs. Kit Taylor Mr. and Mrs. Timothy N. Thoelecke, Sr. Thorn River Foundation Mr. and Mrs. James Tichy Mr. Christopher Toft and Ms. Nicole Dunn Mr. and Mrs. John E. Townsend Mr. and Mrs. Thomas Trapp Mr. and Mrs. George J. Trezek The Trustmark Foundation Mr. Kevin Tulimieri Dr. Martha L. Twaddle and Mr. Tom Millar Var Chem Products, Inc. Mr. and Mrs. Scott F. Vender Mr. and Mrs. Kenneth A. Von Kluck Dr. and Mrs. Timothy V. Votapka Mr. and Mrs. Harvey Wagley Dr. and Mrs. Arnold L. Wagner, Jr. Mr. and Mrs. Robert L. Wallace Mr. and Mrs. R. K. Weil Howard A. Weiss Family Foundation Mrs. Barbara H. West Mr. WF Wheeler Dr. and Mrs. Jack M. Whitney Mr. and Mrs. Thomas J. Williams Dr. and Mrs. David P. Winchester Mr. and Mrs. Harry S. Wolin Ms. Courtenay R. Wood and Mr. H. Noel Jackson Ms. Elizabeth Yntema and Mr. Mark Ferguson Mrs. Monica S. Yolles Mr. Wendell J. Young Mr. and Mrs. Nathan Zivin Dr. and Mrs. Alan M. Zunamon Zurich Insurance Company</p> |
|--|---|---|---|

ADDITIONAL GIFTS RECEIVED

\$100 TO \$499

Anonymous
 A Punto Handbags & Accessories
 Ms. Mary E. Abell and
 Mr. Frederick C. Moore
 Mr. and Mrs. Richard L. Abrahams
 Mr. and Mrs. Daniel L. Abrams
 Mrs. Phyllis S. Aceto
 Mr. and Mrs. Robert A. Adams
 Mr. and Mrs. Larry M. Adelman
 Mr. and Mrs. Melvin S. Adess
 Mr. and Mrs. Andrew S. Adsit
 Advanced Group of Companies
 Aero Direct, Inc.
 Mr. Edward Agosto
 Ms. Mary M. Ainley
 Philip and Ann Alexander
 Mrs. Barbara W. Allen
 Mrs. Robert W. Allen
 Mr. Uzerne W. Allen, Jr.
 Ms. Jean Almonovitch
 Mr. Robert Alpert
 Mr. Allan Alson and
 Ms. Sue Ann Glaser
 Mr. and Mrs. Robert J. Alt
 Mr. Jerry Altshuler
 Mr. and Mrs. Jose Alejandro
 Alvarado
 Am Shalom School Fund
 Amalgamated Transit Union
 Ms. Samia J. Amamoo
 American Bank
 American Biosystems, Inc.
 Mr. and Mrs. Omri Amrany
 Anchor Glass Container
 Corporation
 Mr. and Mrs. Edward C. Anderson
 Mr. and Mrs. Willard C.
 Anderson, Jr.
 Edwin Anderson Construction
 Company
 Andiamo, Inc.
 Mr. and Mrs. James Andress
 Andrews Products, Inc.
 Anets' Food Preparation Systems
 Mr. and Mrs. Scott Anixter
 Dr. and Mrs. Michael G. Ankin
 Antiques Dealers' Association of
 America, Inc.
 Aon Re Worldwide, Inc.
 Apollo Colors Inc.
 Ms. Barbara B. Appelbaum
 Aqua Clear, Inc.
 Mr. and Mrs. Charles M. Arbetter
 Ms. Sydney M. Arenberg
 Mrs. Margaret W. Armstrong
 Mr. and Mrs. Paul Armstrong
 Mr. Morton A. Aronson
 Mrs. Ann K. Arries
 The Arvey Foundation
 Dr. Sylvia L. Asa
 Mr. and Mrs. Carter J. Auslander
 Mr. and Mrs. Don Avers
 Ms. Virginia F. Ayers
 BBJ Linen
 BLR Incorporated
 B. Ritter Sales, LLC
 Mr. and Mrs. Floyd Babbitt
 Mr. and Mrs. Samuel C. Badger
 Mrs. G. F. Baer
 Dr. and Mrs. Howard M. Baim
 Mr. and Mrs. John W. Baird
 Mr. and Mrs. George M. Baker
 Mr. and Mrs. Christopher Ball
 Mr. Patrick Balsier
 Mr. and Mrs. Ronald J. Banas
 Dr. and Mrs. Henry S. Bangser
 M.D. Bankier
 Dr. David Barack and
 Dr. Merle Barack
 Mr. and Mrs. Rocky Barber
 Mr. and Mrs. Bernard D. Bard
 Mr. and Mrs. Arnold Baron
 Ms. Enid L. Baron
 Mr. and Mrs. Edward Barr
 Dr. and Mrs. Ermilo A. Barrera, Jr.
 Barron Machinery Co., Inc.
 Mrs. Jeffrey W. Bartlett
 Mr. and Mrs. Russell A. Bartz, Jr.
 Mr. and Mrs. Richard L. Bass
 Ms. Virginia Bassham
 Mr. Robert J. Bates, Jr.
 Ms. Maureen E. Batrich
 Mrs. Frank Bauder
 Mr. Frank G. Bauer, Jr.
 Mrs. Gertrude Bauer
 Mr. and Mrs. David A. Baum
 Mr. and Mrs. Wesley A. Baumann
 Mr. and Mrs. Jack Bayer
 Mr. and Mrs. Edward G. Bazelon
 Mrs. John A. Beasley, Jr.
 Mr. Richard A. Beck
 Ms. Victoria J. Beck
 Mr. and Mrs. Edward Becker
 Mrs. H. Charles Becker
 Mr. and Mrs. Randall B. Becker
 Mr. and Mrs. Scott Becker
 Mr. and Mrs. Walter Becker
 Becker Architects Limited
 Dr. and Mrs. David F. Beigler
 Mr. and Mrs. Marc I. Beilinson
 Belli and Belli
 Mr. and Mrs. Vincent V. Bellini
 Ms. Judy Bendoff
 Mr. and Mrs. Craig Bennis
 Mr. and Mrs. Robert Bensman
 D. Brett Benson, Inc.
 Mr. and Mrs. Charles W. Benton
 Mr. John E. Benz
 Mr. and Mrs. Norman Bercoon
 Mr. and Mrs. Christopher Berg
 Dr. and Mrs. Bruce M. Berkson
 Mr. and Mrs. Myron Berkson
 Dr. and Mrs. Byron S. Berlin
 Dr. and Mrs. Arnold Berns
 Mr. and Mrs. Bruce Bernstein
 Mr. and Mrs. Irwin S. Bernstein
 Mr. and Mrs. Karl Berolzheimer
 Mr. and Mrs. Wilson J. Besant
 Beth Isreal Deaconess Medical
 Center, Harvard Medical
 Physicians
 Mr. and Mrs. Keki R. Bhote
 Dr. Mary Bielski
 Mr. Terry P. Bigioni and Ms.
 Kimberly J. Grossman
 Mr. Neville M. Bilimoria
 Ms. Susan J. Biller
 Mr. Joseph Binder
 Mr. Martin R. Binder
 Dr. Charles C. Bird
 Mr. and Mrs. Beryl A. Birndorf
 Mr. and Mrs. Walter Bissell
 Mr. and Mrs. Allen Bittker
 Mr. Andrew Black
 Mr. and Mrs. Richard C. Blackwell
 Mr. and Mrs. William Blackwell
 Mr. and Mrs. Robert H. Blanchard
 Mr. and Mrs. Frederick B. Blesi
 Mr. and Mrs. L. Kean Block
 Mr. and Mrs. Richard M. Block
 Ms. Sherry Schmitter Block
 Mr. and Mrs. Lawrie Bloom
 Dr. William D. Bloomer and
 Ms. Lauren S. Taslitz
 Mr. and Mrs. James J. Blum
 Dr. and Mrs. Michael D. Blum
 Mr. and Mrs. Wilbert A. Blum
 Mr. and Mrs. Gerald D. Blumberg
 Mr. and Mrs. Jeffrey Blumberg
 Edward A. Blumen, MD and
 Patricia Foran
 Mr. and Mrs. Sidney Blumen
 Dr. Rebecca and Mr. Daniel
 Blumenthal
 Mr. and Mrs. Norman R. Bobins
 Ms. Lynn Anne Boecler
 Mr. and Mrs. Phillip H. Boersma
 Mrs. Robert Bogner
 Mrs. William Bogolub
 Mrs. Arwed C. Boitel
 Zerda Boland
 Mrs. Howard W. Bonnell
 Mr. Joseph L. Dalton and
 Ms. Billie Booth
 Mr. and Mrs. Alan Borg
 Mr. and Mrs. David P. Bornhoeft
 Mr. and Mrs. Wallace Bornhoeft
 Mrs. Mildred Borre
 Mr. and Mrs. Edwin B. Bosler
 Mr. and Mrs. Stephen Bowen
 Dr. and Mrs. William B. Boyd
 Mr. and Mrs. Robert J. Braasch
 Mr. and Mrs. John W. Bradbury
 Mr. and Mrs. John Bradley
 Frank H. Bramson
 Dr. and Mrs. Randall Brand
 Ms. Esther Brandenburg
 Mr. and Mrs. David F.
 Bratt-Pfotenhauer
 Mr. Terence P. Brennan
 Mr. and Mrs. David Brenner
 Mr. and Mrs. Paul Brenner
 Dr. and Mrs. Richard I. Breuer
 Mr. and Mrs. Morris Brickman
 Mr. and Mrs. Powell Bridges
 Mrs. Betty J. Brittingham
 Mr. and Mrs. Brian J. Brodeur
 Mr. and Mrs. Allan S. Brodsky
 Mr. and Mrs. David C. Brofman
 Mr. and Mrs. Jordan H. Brok
 Mrs. Virginia C. Brooms
 Mr. and Mrs. Richard J. Bronstein
 Mr. and Mrs. Tom M. Brown, Jr.
 Ms. Diane Brown
 Mr. and Mrs. George E. Brown
 Mr. and Mrs. Kirk Brown
 Mr. and Mrs. Lawrence H. Brown
 Ms. Mary Brown
 Mr. and Mrs. Stephen M. Brown
 Brown, Kaplan, and Liss LLP
 Mr. and Mrs. H. F. Brull
 Ms. Alice C. Brunner
 Mr. and Mrs. Dan Brusslan
 Ms. Elizabeth S. Bryan
 Mr. Alex P. Buchek
 Mr. Leo P. Buchek
 Buckley & Associates, LLP
 Mrs. Theodore Buenger
 Mr. and Mrs. Timothy Burke
 Mr. and Mrs. Walter F. Burke
 Mr. Brett Burkhardt
 Mr. and Mrs. Harold Burland
 Mr. and Mrs. Eric Burman
 Mr. and Mrs. Kenneth J. Burns, Jr.
 Mr. and Mrs. Lawrence Burns
 Burns Sports & Celebrities, Inc.
 Mr. and Mrs. Michael Burnstine
 Ms. Elizabeth Burtelow and
 Mr. Jim Boyer
 Mr. Robert W. Butcher and
 Ms. Joy E. Thoma
 Mr. and Mrs. Scott L. Byron
 C.H. Neurology Foundation
 CNA Foundation
 Mr. and Mrs. Jack Cabrey
 John J. Cahill, Inc.
 Mr. and Mrs. Bruce Callow
 Ms. Dena Canmann
 Mr. and Mrs. Harry L. Canmann, Jr.
 Dr. and Mrs. Mark F. Canmann
 Mr. and Mrs. Robert Cannell
 Mr. and Mrs. Francis Cantini
 Capitol Aggregates, Ltd.
 Mr. and Mrs. Joseph C. Cappo
 Ms. Susan A. Capra
 Mr. and Mrs. P. Anthony Carlevato
 Mr. and Mrs. Donald W. Carlin
 Mr. and Mrs. Herbert J. Carlson
 Mr. and Mrs. Patrick Carney
 Ms. Anna M. Carolan
 Mr. and Mrs. Robert R. Carpenter
 Ms. Julie R. Carson
 Carswell Rush Berlin, Inc.
 Ms. Mary A. Carter
 Mr. and Mrs. Gregory Case
 Mr. and Mrs. Brian J. Casey
 Mr. and Mrs. John C. Castanes
 Mrs. John Castner
 Mr. and Mrs. James D. Causey
 Mr. John T. Cavataio >>



“With a sister battling breast cancer for five years, I have seen first-hand how terrible this disease is, and I know how important research dollars are. Evanston Northwestern Healthcare has a specific and unique research orientation, focusing on direct clinical applications for patients. As a board member, I have a commitment to this organization, not only in terms of my time, but also my resources. I feel privileged to be in a position to help advance these efforts.”

—
Connie Duckworth

**A member of the Evanston Northwestern
Healthcare Board of Directors, Connie
Duckworth endowed the Duckworth Family
Chair of Breast Cancer Research.**

>> ADDITIONAL GIFTS RECEIVED \$100 TO \$499

Mrs. William Celentano
Mr. and Mrs. David G. Chandler
Ms. Carol J. Chany
Mr. and Mrs. John N. Chapin, Jr.
Mr. and Mrs. Arthur C. Chapman
Mrs. Howard K. Chapman
Mr. and Mrs. Wheeler Chapman
Mr. and Mrs. Jeffrey M. Charatz
Cheri Lynn Designs, Ltd.
Mr. and Mrs. Joshua Chernoff
Cheryl Bloom Interiors
Mrs. Ernest Cheslow
Mr. and Mrs. Ronald L. Chez
Dr. and Mrs. Charles Chiang
Chicago Heights Steel
Chicago Journeymen Plumbers
The Chicago Network
Mr. and Mrs. John Chmielowski
Ms. Alma J. Chomsky
Mr. Robert A. Christensen
Mr. and Mrs. Peter N.
Christopoulos
Ms. Vicky Chung and Family
Mrs. Alex Cichowski
Dr. and Mrs. Scott B. Cienkus
Ivan and Anne Ciric

Dr. and Mrs. Ronald J. Giskoski
Mr. and Mrs. Robert J. Clancy
Mr. Tom Clancy and
Ms. Dana Ione Green
Mr. William N. Clark
Clark County Credit Union
Mr. and Mrs. Henrik Clausen
Mr. and Mrs. Paul Claytor
Mr. and Mrs. Neil Clemmons
Mr. and Mrs. William Z. Cline
Coastcon Corporation
Mr. and Mrs. David M. Cobb
Mr. and Mrs. Robert P. Coffin
Mr. and Mrs. Jules G. Cogan
Suzanne and Alden Cohen
Mr. and Mrs. Jeffrey Cohen
Mr. and Mrs. Larry H. Cohen
Mr. and Mrs. Lyle Cohen
Mrs. Pearl Cohen
Mr. and Mrs. Sheldon Cohen
Mr. and Mrs. Stephen P. Colbourn
Mrs. Lynn Cole
Dr. and Mrs. Roger B. Cole
Mr. and Mrs. Joseph W. Coleburn III
Mr. and Mrs. Bruce Coleman
Ms. Emily M. Coleman

Mrs. Lillian Coleman
Ms. Marygrace Coll
Mr. and Mrs. James Collins
Mr. and Mrs. John Collins
Concep Machine Co., Inc.
Mrs. Frank L. Coninx
Mr. and Mrs. Matthew Connelly
Ms. Antoinette Conover
Mr. and Mrs. William H. Cooley, Jr.
Dr. and Mrs. Scott A. Cooper
Mr. and Mrs. Lewis F. Coplan
Ms. Catrina M. Corey
Mr. Ronald J. Corio
Mr. and Mrs. Salvatore Cottone
Ms. Patricia Courtney
Cowan's Historic Americana
Auctions
Dr. and Mrs. William D. Cox, Jr.
Dr. and Mrs. Jeffrey W. Cozzens
CPF Sales Incorporated
Mr. and Mrs. W. Scott Craig
Mr. Stephen F. Crane
Mrs. Betty Ann Cratty
Mr. and Mrs. Dewey B. Crawford
Crescent Systems, Inc.
Mrs. Dorothy J. Crisafulli

Mr. and Mrs. Kenneth L. Crossland
Crow Island School PTA
Mrs. Sandra K. Crown
Mr. and Mrs. Richard Cudahy
Dr. Cara L. Culmer
Ms. Gabrielle Cummings
Law Office of George Cummings
Mr. and Mrs. Robert J. Cunningham
Mrs. Arnold J. Curry
Dr. and Mrs. John W. Curtin
Mr. and Mrs. Chase S. Curtis
Mr. and Mrs. Ken C. Curtis
Mrs. Carol Cyrus
Mr. and Mrs. Jim Dadura
Mr. and Mrs. Lawrence W. Daily
Mr. and Mrs. Sheldon Dakoff
G.J. Daleiden Commodities
Mr. and Mrs. Joel M. Dalkin
Mrs. Ronald and Susan Daniel
Mrs. George I. Daniels
Darvin Furniture
Mr. and Mrs. Christopher O. Dasilva
Daubenspeck and Associates, Ltd.
Mr. and Mrs. Robert J. Daugherty
Mr. Brian A. David
Mrs. Joan B. David

Mr. and Mrs. Alan J. Davidove
 Mr. and Mrs. Britton A. Davis
 Mr. and Mrs. John T. Davis
 Mr. and Mrs. Robert C. Davis III
 Mr. and Mrs. John D. Dawson
 Ms. Katherine H. Dawson
 Mr. and Mrs. Herman J. De Koven
 Mr. and Mrs. Frank DeFrank
 Ms. and Mr. Carla M. Dehmlow
 Mr. and Mrs. Albert S. Deichmiller
 Mr. and Mrs. Andrew M. Denenberg
 Mr. and Mrs. Charles G. Denison
 Mr. and Mrs. Richard D. Denison
 Ms. Margaret A. Dennis
 Dental Professionals of Old Orchard
 Ms. Carol M. Dergo
 Des Plaines Glass Company
 Designed by Denise
 Diamond Schreiber Homes
 Mr. and Mrs. Daniel M. Dickinson
 Ms. Linda Dillman
 Mr. and Mrs. Terrence J. Dillon
 Mr. and Mrs. Barnaby Dinges
 Dr. Mara Dinsmoor
 Ms. Carol Diprima
 Mr. and Mrs. Steve Distler
 Mr. and Mrs. Jack Doerge
 Mr. and Mrs. J. P. Doherty
 Dr. and Mrs. Henry J. Dold
 Mr. and Mrs. James R. Dolphin
 Mrs. Maureen B. Domerchie
 Donnellan Family Funeral Services
 Mr. and Mrs. James W. Doran
 Ms. Lynne Dorfman
 Mrs. Violet Dorner
 Mrs. Clarissa Y. Downey
 Mr. and Mrs. William C. Doyle
 Mr. and Mrs. George T. Drake
 Drebin, Lindquist, & Gervasio, Ltd.
 Mr. and Mrs. Daniel M. Dressel
 Mr. and Mrs. Robert L. Drewry
 Mr. and Mrs. Ray F. Drexler
 Mr. Arthur D. Dubin
 Mr. Robert Duermit
 Mr. and Mrs. Stuart Duhl
 Mr. and Mrs. Lawrence M. Dulin
 Duncannon Associates, Inc.
 Mr. and Mrs. Stephen Dyer
 Mr. and Mrs. Stanley Dzwoniarek
 Mr. Stephen Earhart
 Mr. and Mrs. Robert Easton
 Ms. Frances Eaton
 Mr. and Mrs. Jerrold L. Eberhardt
 Mr. and Mrs. George Eberle
 Mr. and Mrs. Dennis Eckberg
 Mr. Edwin A. Edelberg
 Dr. Robert R. Edelman
 Edgewater Uptown Builders
 Association
 Mr. Richard W. Edwards
 Mr. Stephen W. Edwards
 Dr. Amy G. and Mr. James Egan
 Mr. and Mrs. Frank A. Ehmann
 Mr. Morton Einbinder
 Ms. Lesley Eisenberg
 Ms. Sheila Eisenberg
 Mrs. Sydelle R. Eisenberg
 Mrs. Nancy Eisenstaedt
 Dr. and Mrs. Richard H. Elesh
 Dr. Sandra L. Elfering
 Mrs. Jerrold Elford
 Dr. and Mrs. James Elipas
 Mr. and Mrs. Michael Elliott
 Elsevier Science USA
 Mr. and Mrs. Edward Elukin

Mr. and Mrs. J. W. Embree III
 Mr. and Mrs. Jon T. Ender
 Mr. and Mrs. Leon Engel
 Mr. Sydney Engel
 Mrs. Robert S. Engelman, Sr.
 Enivar Charitable Fund
 Mr. Daniel W. Enright
 Mrs. Sue Epstein
 Equity Marketing, Inc.
 Mr. and Mrs. Roger L. Erb
 Mr. and Mrs. Ludwig Erdbeer
 Mr. and Mrs. Michael H. Erde
 Ms. Rebecca Erde
 Ms. Mary E. Erdman
 Ms. Erica E. Erich
 Mr. and Mrs. Hyland B. Erickson
 Mr. and Mrs. John W. Erickson
 Ernst & Young
 Mr. and Mrs. Larry Estes
 Mr. and Mrs. Richard Ettinger
 Mr. and Mrs. Kevin Evanich
 Evans, Loewenstein, Shimanovsky,
 & Moscardini, Ltd.
 Evanston Northwestern Healthcare
 Medical Group
 Evanston Northwestern Healthcare
 Parent to Parent Group
 Evanston Township High School
 Evanston Township High School
 PTSA
 Mr. and Mrs. Kenneth Faberman
 Ms. Jane E. Fanslow
 Mr. and Mrs. Bijan Farah
 Mr. and Mrs. James Farmer
 Mrs. Holden Farrar, Jr.
 Dr. Elaine E. Farrell and
 Dr. Jason C. Birnholz
 Mr. and Mrs. Richard W. Farwell
 Ms. Susan N. Fasciano
 Feeney Kellett Wiennner & Bush
 Mr. Harry C. Fehr
 Ms. Barbara W. Fehrmann
 Mr. and Mrs. Alfred Feiger
 Mr. and Mrs. Melvyn J. Feldman
 Drs. Ted and Marie Feldman
 Mrs. J. Olof Fellman
 Mrs. Joyce S. Fenchel
 Dr. and Mrs. Geoffrey Fenner
 Ms. Susanne L. Feret
 Mr. and Mrs. Edward H.
 Ferguson, Jr.
 Mr. and Mrs. Lloyd Ferguson
 Mrs. Sally M. Fetzer
 Mr. and Mrs. Wade Fetzer III
 Mr. Michael J. Fiddelke
 Mrs. Mary Fields
 Mr. and Mrs. Thomas W. Filippini
 Mrs. Joan Fine
 Dr. Martin and Mrs. Susan Fine
 Mr. and Mrs. Kevin Finger
 Mr. and Mrs. Howard M. Fink
 Mr. Jeffrey Finke
 Mr. and Mrs. H. B. Firestone
 First Bank of Highland Park
 Foundation
 The Fish & Ehrlichman Family
 Foundation
 Drs. Michael and Mona Fishbane
 Ms. Barbara Fisher
 Mrs. Jean F. Fisher
 Drs. Westby and Diane Fisher
 Mr. and Mrs. Gerald A. Fishman
 Mr. Benjamin Fisk
 Dr. and Mrs. Philip J. FitzSimons
 Mr. Robert C. Fix

Mr. and Mrs. Richard H. Fjeldheim
 Mr. and Mrs. Brian Flanagan
 Mr. and Mrs. Staunton Flanders
 Mr. Robert B. Flannery
 Mr. and Mrs. Alvin Flax
 Dr. and Mrs. S. Sol Flores
 Mrs. Paul A. Florian III
 Mrs. Leonard S. Florsheim, Jr.
 Mr. and Mrs. John M. Foley
 Mr. and Mrs. William D. Folland
 Mr. and Mrs. Frederick Forbes
 Dr. Shirley J. Forbes and
 Dr. Joe Michelotti
 Mr. Richard R. Forest
 Mr. and Mrs. Joseph A. Fosco
 Foster Weaver Perry & Co.
 Mr. Daniel W. Fox
 Mr. and Mrs. Geoff Fox
 Ms. Inge F. Fox
 Mr. and Mrs. John S. Fox
 Mr. and Mrs. Ronald W. Fox
 Mr. and Mrs. Arthur A. Frank, Jr.
 Mr. and Mrs. George B. Frank
 Frankel Foundation
 Mr. and Mrs. Lester E.
 Frankenthal III
 Dr. and Mrs. Mark L. Franklin
 Mr. and Mrs. John Freeman
 Mr. and Mrs. William J. Frey
 Mrs. Catherine B. Friedler
 Mr. and Mrs. Fred Friedman
 Mr. and Mrs. Joel M. Friedman
 Ms. Judy Friedman
 Ms. Kay A. Friedman
 Ms. Linda Friedman
 Mr. and Mrs. Richard Friedman
 Mr. and Mrs. Harrison D. Friestedt
 Frigo & Company
 Mr. and Mrs. Tim Frost
 Mr. and Mrs. Mark A. Fuller III
 Mr. and Mrs. Ralph J. Gabric
 Ms. Kathleen Gaffney and
 Mr. John Pyne
 Mrs. John P. Gallagher
 Mr. and Mrs. Michael Gallagher
 Mr. and Mrs. Howard Galler
 Mr. and Mrs. Neil E. Gambow
 Mr. and Mrs. Edward P. Gamson
 Mr. and Mrs. Joseph Garber
 Mr. and Mrs. Donald F. Gardner
 Ms. Susan A. Garrity
 Garth's Auctions, Inc.
 Dr. and Mrs. James E. Garvin
 Mr. and Mrs. Steven R. Gaumer
 Mr. and Mrs. Richard I. Gavin
 Mr. and Mrs. Malcolm M. Gaynor
 General Press Colors, Ltd.
 Mr. and Mrs. Ed Genson
 Gentle Dental Care, P.C.
 Mr. and Mrs. John Geocariss
 Mrs. Charles E. Gerber
 Dr. Margaret T. Gerber
 Mrs. Robert Gerrie
 Mr. and Mrs. Benjamin Gerstman
 Mr. and Mrs. Douglas Gerstner
 Mrs. Lee Getschow
 Mr. Marvin W. Gettleman
 Mrs. Margaret C. Gibbons
 Mr. Robert Giblichman
 Gielow Agency, Inc.
 Dr. Louis W. Gierke
 Ms. Clarice J. Giffhorn
 Ms. Bertie Gilbert
 Mr. and Mrs. John Gilchrist
 Mr. and Mrs. Richard J. Gilgan

Mr. and Mrs. Michael J. Gill
 Mr. and Mrs. Rick C. Ginex
 Mr. Edward A. Ginger
 Frank and Madge Ginn
 Mr. and Mrs. Gerald B. Ginsburg
 Mr. and Mrs. Boris Ginzburg
 Mr. and Mrs. Haim Ginzburg
 Glass and Weiner
 Ms. Julie Glassford
 Mr. and Mrs. Allyn F. Glaub
 Mr. and Mrs. Barry R. Glazer
 Mr. and Mrs. William J. Glazer
 Mr. and Mrs. Norman Glicksberg
 Mr. and Mrs. Daniel J. Gluck
 Mr. and Mrs. William H. Gofen
 Ms. Marena Gohmann
 Ms. Margo Goia
 Mr. and Mrs. Arthur E. Goldberg
 Mr. and Mrs. Barry R. Goldberg
 Mr. and Mrs. Mark A. Goldberg
 Dr. and Mrs. Michael J. Goldberg
 Mr. and Mrs. Henry Goldberg
 Mr. and Mrs. Edward L. Golden
 Mr. and Mrs. Michael Goldfine
 Mr. and Mrs. Louis B. Goldman
 Mr. and Mrs. Philip Goldman
 Mr. Michael J. Goldner
 Mr. and Mrs. Donald F. Goldsmith
 Dr. and Mrs. Maurice Goldstein
 Ms. Minette Goldstein
 Mr. and Mrs. Jeffrey A. Golman
 Mr. and Mrs. Robert Goodman
 The Goodman Charitable Trust
 Mr. Rollie M. Goodrich
 Mr. and Mrs. Charles Goodsite
 Ms. Addi Gorchow
 Mr. and Mrs. Gerald M. Gordon
 Mr. and Mrs. Harvey C. Gordon
 Mr. and Mrs. Trent E. J. Gordon
 Ms. Rita Gorham
 Howard & Roberta Goss
 Charitable Foundation
 Mr. and Mrs. Richard D. Gottfred
 Mr. and Mrs. Paul C. Govert
 Mr. and Mrs. Stanley D. Grace, Jr.
 Mr. and Mrs. Howard A. Graening
 Mr. and Mrs. John Graf
 Dr. and Mrs. Jeffrey G. Graff
 Mrs. Gunhild W. Grashorn
 Mr. Joshua H. Gray
 Gray's Travel Management Services
 Mrs. Molly L. Green
 Mr. and Mrs. Barry D. Greenblatt
 Ms. Joan F. Greene
 Mrs. Helen D. Greenebaum
 Mr. and Mrs. Mark A. Greenhill
 Mr. and Mrs. Michael L. Greenhill
 Ms. Joanne E. Greenstein
 Mr. Robert P. Griffiths
 Dr. and Mrs. Hugh G. Grimes
 Mr. and Mrs. Steven E. Grob
 Sam & Sarah Grossinger
 Foundation
 Mrs. Barbara Grossman
 Ms. Rosalyn Grossman
 Mr. and Mrs. John S. Gude
 Mr. and Mrs. Charles Gurke
 Ms. Kay L. Gurtin
 Dr. and Mrs. Frank W. Guthrie
 Mr. and Mrs. Edward A. Gutmann
 Mr. and Mrs. Arthur M. Gutterman
 H.I.G. Capital Management, Inc.
 Mr. and Mrs. Alfred E.
 Hackbarth, Jr.
 Dr. and Mrs. Steven L. Haddad >>

>>ADDITIONAL GIFTS RECEIVED \$100 TO \$499

Mr. and Mrs. Willard Hadlock
 Mr. and Mrs. Michael V. Hagedorn
 Mr. and Mrs. Joseph G. Hagee
 Mr. John Haley
 Mr. and Mrs. Jesse Hall
 Mr. and Mrs. Winthrop W. Hamilton
 Mr. John P. Hammond
 Ms. Mary-Martha Hancock
 Mr. Chester S. Handelman
 Mr. Robert P. Handler and
 Ms. Dawn A. Harris
 Mr. Steven P. Handler
 Dr. and Mrs. Bernard Hankin
 Mr. and Mrs. Wayne R. Hannah, Jr.
 Ms. Christine J. Hanneman
 John and Janice Hannsz
 Mr. and Mrs. James Hansen
 Mr. and Mrs. William A. Hansen
 Mr. and Mrs. Breck F. Hanson
 Mr. and Mrs. Charles C. Happ
 John and Elizabeth Harack
 Harger Lightning & Grounding
 Ms. Martha P. Hargie
 Ms. Elisa Harmon
 Mr. and Mrs. James M. Harmon
 Mr. and Mrs. Don S. Harnack
 Mr. and Mrs. Michael D. Harper
 Mrs. David J. Harris
 E.F. Harris Family Foundation
 Mr. and Mrs. Thomas M. Harris
 Mrs. George H. Hartman, Jr.
 Mr. Henry H. Hartmann
 Mr. and Mrs. George F. Hartnett
 Mr. and Mrs. John B. Hassmer
 Mr. and Mrs. David Hauldren
 Mr. William P. Hauworth II
 Dr. Kathleen A. Havlin
 Ms. Mary Jane Hawkins
 Mr. and Mrs. Frank W. Hawkinson
 Ms. Bridget Hayes
 Mr. and Mrs. Jeffrey K. Heal
 Mr. and Mrs. J. M. Heaton
 Ms. Jeanne E. Hebels
 Mr. and Mrs. Mark Heckert
 Mr. and Mrs. Daniel K. Heenan
 Ms. Randi Heichman
 Mrs. Harriet Heifetz
 Mr. and Mrs. Scott Heitmann
 Mr. and Mrs. Cameron Hendershot
 Mr. Stephen Hennenfent
 Mr. and Mrs. Francis L. Herbert
 Ms. Evelyn M. Hernandez-Uy
 Mr. Dorrit E. Herreid
 Mr. and Mrs. James T. Herst
 Mr. John D. Hetzler
 Mr. and Mrs. Jack Heyden
 Mr. Walter B. Hickey, Jr.
 Mrs. Diana H. Higgins
 Mr. Edward C. Hildreth, Jr.
 Dr. and Mrs. Carl E. Hill
 Mr. and Mrs. James Hill
 Mr. and Mrs. James M. Hill
 Mr. and Mrs. Winfred F. Hill
 Mr. Jack Hiller
 Mr. Arthur S. Hillman
 Mr. and Mrs. Harold E. Hindsley
 Mrs. Harold H. Hines
 Mr. Jeffrey G. Hines
 Mr. John D. Hinkamp, Sr.
 Mr. Joel S. Hirsch
 Mr. and Mrs. Allen Hirschfield
 Dr. and Mrs. Phillip C. Histand
 Mr. and Mrs. Alan Ho
 Hochberg Family Foundation
 Mr. and Mrs. Charles H. Hodges IV
 Mr. and Mrs. Thomas W. Hodson
 Mr. and Mrs. James R. Hodur
 Mrs. Ann S. Hoenig
 Mr. and Mrs. John J. Hoffart
 Mr. and Mrs. John L. Hoffsted
 Mr. and Mrs. Robert Hogan
 Mr. Thomas E. Hogan
 Dr. Julie S. Holland and
 Dr. Gordon S. Gluckman
 Mr. and Mrs. Philip Holland
 Dr. and Mrs. Lawrence E. Hollander
 Mr. William S. Hollatz
 Mr. Thomas L. Holloway
 Mr. Fred Hombach and Ms. Connie
 Chindlund-Hombach
 Mr. and Mrs. William H. Honaker III
 Mr. and Mrs. William L. Hood, Jr.
 Mr. and Mrs. Mark A. Hoppe
 Mr. and Mrs. Frederick D. Horn
 Mr. Franklin Horwich
 Mr. and Mrs. Joseph C. Houghteling
 Mr. and Mrs. David C. Hovey, Sr.
 Mr. and Mrs. Bruce B. Howat
 Mr. and Mrs. William A. Hoy
 Mr. Charles Hoyt
 Mr. and Mrs. Philip G. Hubbard
 Ms. Christine Hughes
 Ms. Mary Ellen Hughes
 Ms. Pamela J. Hutul
 IACMP-Chicago Chapter
 Illinois Trial Lawyers Association
 Mr. and Mrs. Kenneth Indermark
 Miss Ruby E. Ingesson
 Mr. Marc Ippolito
 Ms. Harriet P. Irsay
 Ms. Gloria J. Irwin
 Dr. and Mrs. Richard Isaacson
 Mr. and Mrs. Richard S. Isenberg
 Mr. Ronen Israel
 J. Vignola, Inc.
 Mr. and Mrs. Bill Jackson
 Mr. and Mrs. John P. Jackson
 Ms. Marcia G. Jacobs
 Ms. Marcia R. Jacobs
 Dr. Stanley E. Jacobs
 Jaffee Foundation
 Cheri and Milton Jaffe
 Mrs. Mary B. Jaffe
 Mr. Randy Jaffe
 Mr. and Mrs. Robert D. Jaffee
 Mr. and Mrs. Tom Jagielo
 Dr. Lee M. Jampol and
 Ms. Erma Tranter
 Ms. Alexandra Janet
 Mr. and Mrs. Raymond J. Janisse
 Mr. and Mrs. Peter R. Janss
 Mr. and Mrs. Richard M. Jauron
 Mr. and Mrs. Steven Jenkins
 Dr. Nancy L. Jensen
 Mr. and Mrs. Richard D. Jernstedt
 Ms. Joy S. Jeschke
 Mr. Ying C. Jiang
 Ms. Adrienne M. Johnson
 Dr. Janice L. Johnson and
 Mr. Robert P. Dunk
 Mrs. Marcia R. Johnson
 Mr. and Mrs. Robert S. Johnson
 Dr. Rosalie and Mr. Steven Johnston
 Mr. David J. Jolly
 Ms. Mary Beth Jones
 Mrs. Robert I. Jones
 Mr. Robert S. Jones
 Mrs. Virginia P. Joyce
 Mr. and Mrs. Wade W. Judge
 Mr. and Mrs. Robert S. Julian
 Jump Higher-Connecticut, LLC
 Justgive
 Mrs. Susan Kahn
 Mr. and Mrs. David Kahnweiler
 Mr. and Mrs. Steve Kalish
 Ms. Patricia Kallio
 Ms. Jeongok Kang
 Mr. and Mrs. Allen L. Kaplan
 Mr. and Mrs. Arnold Kaplan
 Dr. and Mrs. Douglas S. Kaplan
 Mr. and Mrs. James Kaplan
 Ms. Marjorie Kaplan
 Mrs. Sidney Kaplan
 Ms. Susan B. Kaplan
 Mr. and Mrs. James Karagianis
 Mr. and Mrs. Wayne Karbal
 Mr. and Mrs. Larry Karchmar
 Ms. Amy D. Karel
 Ms. Gayle A. Karhanek
 Mr. Paul M. Karlin
 Dr. and Mrs. Steven B. Kase
 Mr. and Mrs. Louis Kasischke
 Mrs. Albert Kaskel
 Mr. and Mrs. Walter Kasten
 Mr. Ronald S. Katch
 Mr. and Mrs. Jory B. Katlin
 Mrs. Yasuye Kato
 Mr. Alex M. Katz
 Dr. and Mrs. Howard M. Katz
 Mr. and Mrs. Joel S. Kaufmann
 Dr. Karen L. Kaul and
 Dr. Anthony Cirrincione
 Ms. Kimbley Kearney
 Mr. and Mrs. Glenn A. Keats
 Ms. Martha J. Keever
 Mrs. Doris J. Keller
 Keller Williams Fox & Associates
 of Chicago
 Ms. Nancy Kelly
 Kelly Dental, PC
 Ms. Bernadette Kenny and
 Mr. Kenneth W. Schuler
 Mr. and Mrs. Kenneth C. Kent
 Mr. Stanley S. Kent
 Mr. and Mrs. John K. Kerr
 Dr. Morris S. Kharasch and
 Ms. Maureen Batridge
 Mr. and Mrs. John T. Kibler
 Mr. and Mrs. William L. Kidder
 Mr. John Kiley and
 Ms. Laura St. Pierre
 Mr. Stephen D. Killian
 V. J. Killian Co.
 Mr. and Mrs. Robert B. King
 Ms. Marilyn G. Kinne
 Mr. and Mrs. Richard P. Kiphart
 Mr. and Mrs. Robert P.
 Kirchheimer
 Kirkland and Ellis Foundation
 Mr. and Mrs. Joe A. Kirkland
 Mr. and Mrs. Peter Kirkpatrick
 Mr. and Mrs. Richard Kirsch
 Mr. and Mrs. Richard J. Kissel
 Mr. Murray Klanfer
 Mr. and Mrs. James Klein
 Klein and Hoffman, Inc.
 Mr. Irving M. Klotz
 Ursulla and Ronald Knakmuhs
 Lance L. Knox and Mary E.
 Lambert Family Foundation
 Ms. Mary Koczorowski
 Mr. Charles L. Koenen
 Ms. Dolores A. Kohl
 Mrs. Marlene Kolakowski
 Mr. and Mrs. Kim Kolflat
 Kolflat Systems/Norge Software
 Mr. Peter R. Kommer
 Mr. and Mrs. Barry Konigsford
 Mr. and Mrs. James D. Koolish
 Dr. and Mrs. Michael S. Korey
 Carl and Frances Korn Foundation
 Mr. Nick Kosiara
 Mr. and Mrs. Andrew Koszyk
 Mr. and Mrs. Robert S. Kotlarz
 Dr. and Mrs. Colman Kraff
 Mr. Howard J. Kraus
 Dr. and Mrs. Kenneth A. Krebs
 Ms. Shirley Kreisman
 Mr. and Mrs. Mitchell D. Kreiter
 Krest Products, Corp.
 Mr. and Mrs. David Kritzler
 Mr. and Mrs. Robert A. Kroll
 Mr. and Mrs. E. Herbert Krug
 Dr. and Mrs. James C. Kudrna
 Mr. and Mrs. L. J. R. Kuo
 Mr. and Mrs. William Kuo
 L.A. Focus
 LWK, Inc.
 Ms. Sharon Lacey
 Mr. and Mrs. Mark K. Lahey
 Mr. and Mrs. Alex Lallanilla
 Lamination Specialties
 Lana Unlimited Co.
 Louise H. Landau Foundation
 Mr. Richard H. Lane
 Mr. and Mrs. Kenneth R. Langsdorf
 Mr. John H. Lapperre
 Mr. Walter G. Larkin
 Mr. and Mrs. Craig B. Larsen
 Mr. and Mrs. Bruce H. Larson
 Mr. and Mrs. John F. LaShorne
 Dr. and Mrs. Arthur Lasin
 Mrs. Shirley Lason
 Mrs. Richard E. Lassar
 Mr. Arthur Lasser
 Dr. and Mrs. Jules H. Last
 Ms. Gail Lawrence
 Ms. Judy K. Lawrence
 Mr. and Mrs. Greg Lawson
 Mrs. Miriam Lazar
 The Learning House
 Mr. and Mrs. George M. Leavitt
 Mr. and Mrs. Ken Leavitt
 Mrs. Gilbert Lebkuecher
 Ms. Muriel N. Lederer
 Mr. and Mrs. Richard C. Lee
 Mr. Robert J. Lee
 Mr. and Mrs. Paul B. Lefebvre
 Mr. Paul A. Lehman and
 Ms. Ronna S. Stamm
 Mr. David I. Leib
 Mr. and Mrs. Charles H. Leighton
 Dr. and Mrs. Jerrold B. Leikin
 Judge and Mrs. Mitchell Leikin
 Mrs. Raymond J. Leleniewski
 Mr. and Mrs. Albert Lencioni
 Mr. Richard W. Leopold
 Mr. and Mrs. Richard D. Lepman
 Dr. and Mrs. David J. Lerner
 Mr. and Mrs. Alexander R. Lerner
 Mr. and Mrs. Perry A. Lerner
 Mr. and Mrs. Scott Levenfeld
 Mr. and Mrs. Harry J. Levi
 Mr. and Mrs. Richard R. Levi
 Mr. Donald R. Levin
 Mr. Arthur K. Levy Jr.
 Mr. and Mrs. Stephen Levy
 Mr. and Mrs. Alan Lewis
 Ms. Margaret H. Lewis
 Mr. and Mrs. Richard C. Lewis

Liberty AutoCity
 Drs. Sherwood and Sharon Libit
 Mr. and Mrs. Lorry Lichtenstein
 Mr. Michael Lichtenstein
 Mr. and Mrs. Donald Liebensson
 Mr. and Mrs. Paul D. Lieberman
 Ms. Sharon A. Lieberman
 Ms. Varda Lief
 Lin-Mar Motors, Inc.
 Mr. Ralph A. Lindauer
 Mr. and Mrs. Andrew Lindblad
 Mr. and Mrs. Allan Linderman
 Ms. Nancy J. Lindsay and
 Mr. Grant Linsky
 Drs. Evan and Sheree Lipkis
 Mr. and Mrs. Edward C. Litke
 Mr. Peter J. Livaditis
 Mr. and Mrs. Paul T. Lively
 Mr. and Mrs. Brad E. Livingston
 Henry and Elsie Loeb
 Mr. and Mrs. Paul L. Loeb
 Mr. and Mrs. Michael Loeber
 Mrs. Wickliffe S. Loomis
 Mr. and Mrs. Julius Lopin
 Mrs. John J. Louis, Jr.
 Ms. Marcena W. Love
 Ms. Judith Lowes
 Mr. and Mrs. Brian E. Lucas
 Mr. and Mrs. Henry W. Ludwig, Jr.
 Mr. and Mrs. John D. Lydon
 Mr. and Mrs. Daniel Lyonnois
 Mr. and Mrs. James Lyons
 Mr. and Mrs. Paul V. Lyons
 M & J Wilkow Management Corp.
 Mr. and Mrs. Richard G. Macali
 Mr. and Mrs. Peter MacBeth
 Mr. and Mrs. Eric N. Macey
 Mr. and Mrs. Edward E. Mack III
 Mr. and Mrs. Jim Mack
 Mrs. June P. Mack
 Mr. John E. Madden
 Magnet Communications, LLC
 Mr. and Mrs. Daniel J. Maguire
 Mr. and Mrs. Leonardo Malalis
 Mr. and Mrs. Joseph Maloney
 Ms. Christine V. Malwitz
 Ms. Sylvie Manaster
 Mr. and Mrs. Irwin B. Mandel
 Mr. and Mrs. Allen E. Mandell
 Mr. David E. Mann
 Mr. and Mrs. Edward Mann
 Mr. and Mrs. H. George Mann
 Clarence and Bernice Mann Family
 Foundation
 Mr. and Mrs. Barry L. Markl
 Mr. and Mrs. Michael R. Marks
 Mr. and Mrs. Daniel Marks
 Dr. and Mrs. Norman J. Markus
 Mrs. Karen S. Marshak
 Mr. and Mrs. Harold D. Marshall
 Ms. Kathy Martin
 Mr. and Mrs. Theodore B. Martin, Jr.
 Mr. and Mrs. Rocco Martino
 Ms. Loui Marver-Somberg
 Mr. and Mrs. Thomas S. Marx
 Mr. and Mrs. Sandy Mason
 Mr. and Mrs. Richard L. Mathias
 Mr. and Mrs. Harry Mattea
 Mr. and Mrs. Norman L. Matthew
 Mr. and Mrs. Keith E. Matushek
 Mr. and Mrs. Bert J. Maxon
 Mr. M. Finley Maxson
 Mr. and Mrs. Alan H. Mayer

Ms. Karen H. Mayer and
 Mr. Kenneth E. Pospiech
 Ms. Donna Broder and
 Mr. Larry Mayer
 Mr. and Mrs. Russell Mayerfeld
 Mr. and Mrs. John A. Mayfield
 Mr. and Mrs. Thomas J. Mazzetta
 Mr. and Mrs. Philip V. McCanna
 Mr. and Mrs. Donald S. McLean
 Mr. and Mrs. William E. McBride
 Mr. and Mrs. John R. McCambridge
 Mr. and Mrs. Daniel J. McCarthy
 Marguerite D. McCarthy
 Mr. and Mrs. Michael J. McCarthy
 Mr. and Mrs. Peter B. McCarthy
 Mr. and Mrs. Thomas J.
 McCausland, Jr.
 Mr. and Mrs. Norman McClave, Jr.

Mr. and Mrs. Francis J. McConnell
 Mr. and Mrs. Jack D. McCullough
 Mrs. Jean McDavid
 Mrs. Margaret M. McDowell
 Mr. Jeff McFarlane
 Ms. Joan M. McGillicuddy
 Ms. Joan F. McGrath
 Mrs. Audrey M. McGuire
 Mr. and Mrs. Timothy J. McGuire
 Mr. and Mrs. William C. McIntosh
 Dr. and Mrs. William P. McKeever
 Mr. and Mrs. David A. McKenna
 Mr. and Mrs. James R. McKenzie
 Mr. and Mrs. John F. McKeon
 Mr. and Mrs. Peter B. McKinnon
 Mr. and Mrs. J. McLachlan
 Mr. and Mrs. William C.
 McMahan, Jr.

Ms. Doris S. McMorrow
 Mr. and Mrs. Mark McNabola
 Mr. J. Barry McRaith
 Mr. and Mrs. David McWilliams
 Medical Equipment Mktg.
 Organization Inc.
 Dr. and Mrs. Manoj K. Mehta
 Mr. Charlie J. Meitner
 Ms. Patsy J. Mellott
 Ms. Rita Meltzer
 Mrs. Pamela S. Menaker
 Mr. and Mrs. Gerald Mendelssohn
 Mr. and Mrs. Ronald Meneley
 Mr. and Mrs. John Mengelt
 The Mennonite Foundation, Inc.
 Ms. Donna Menser-Hunter
 Mr. Roger D. Merletti
 Mr. and Mrs. Peter J. Merlin >>



“My grandfather, Owen L. Coon Sr., believed that he was a link in a chain. By establishing the Owen L. Coon Foundation he could lengthen that chain by supporting various causes such as Medicine, Education and Public Service. As medical research evolves and medicine advances, so does that chain, one link at a time. The Coon Foundation is very proud to have Evanston Northwestern Healthcare be a part of that chain.”

—
 Owen L. Coon III

Recognized for their generous support of Evanston Northwestern Healthcare with membership in the Chairman's Society, the Owen L. Coon Foundation family members met in Montana this year and decided to fund the Owen L. Coon Chair in Cardiothoracic Surgery.

>>ADDITIONAL GIFTS RECEIVED \$100 TO \$499

Mrs. Richard L. Merrick
 Mr. John Merz
 Mesirow Financial
 Mr. and Mrs. Richard S. Mesirow
 Metavante Corporation
 Mr. and Mrs. Daniel R. Metz
 Jeannette K. Metzdorf
 Mrs. Gloria Hope Matthews Metzler
 Mr. and Mrs. Jack Mewhirter
 Mr. and Mrs. Robert B. Meyer
 Mr. Buddy Meyers and
 Ms. Jill Teitelbaum
 Ms. Catherine C. Michel Simonton
 Midwest Bookhunters
 Mr. and Mrs. Dennis Migila
 Mr. Steven Milanowycz
 Dr. and Mrs. David D. Mill
 Mr. and Mrs. Adam L. Miller
 Dr. and Mrs. Frederick H. Miller
 Mr. and Mrs. Glen Miller
 Mr. Lee R. Miller
 Mr. Ryan Miller
 Mr. Stephen R. Miller
 Mrs. Robert L. Milligan
 Mr. James A. Millner
 Ms. Ruth J. Milner
 Mr. and Mrs. Frank R. Milnor
 Mr. and Mrs. Edward Minor
 Mr. Eugene L. Mitchell, Jr.
 Mr. Jack B. Mitchell
 Mrs. Mary Ellen Mitchell
 Ms. Berenice E. Mittelman
 Mr. and Mrs. Paul L. Mohling
 Mr. and Mrs. Scott C. Mohr
 Dr. and Mrs. Neal A. Moller
 Dr. Daphne K. Moloney
 Mr. Tull Monsees
 Monterey Media, Inc.
 Mr. and Mrs. James C. Mooney
 Mr. John Moore
 Ms. Kevan Moran
 Mr. and Mrs. Owen A. Moran
 Mr. and Mrs. John G. Moravec
 J.P. Morgan
 Ms. Kathleen A. Morgan
 Mr. and Mrs. Michael M. Morison
 Dr. and Mrs. Buel S. Morley
 Mr. and Mrs. John A. Morris
 Ms. Lois Morris
 Mr. and Mrs. Keith Morton
 Dr. and Mrs. Gerald Moss
 Mr. and Mrs. Morton S. Moss
 Mr. and Mrs. Carl F. Mueller
 Mr. and Mrs. Joseph P. Mueller
 Mr. Thomas J. Murphy
 Mr. Harry W. Murray
 Mr. William E. Mussett
 Mr. and Mrs. Ferdinand Nadherny
 Mr. and Mrs. Edward J. Nadler
 Ms. Jane Nagata
 Mr. Brandon M. Nagler
 Mr. and Mrs. Sheldon Nahmod
 Mr. and Mrs. Keith Nakamoto
 Dr. and Mrs. Ranjeev K. Nanda
 Mr. and Mrs. David Nankin
 Mr. and Mrs. Robert C. Nash
 Mr. and Mrs. John H. Nathan
 Mr. and Mrs. Thomas C. Nathan
 The National Conference for
 Community and Justice, Inc.
 National Foundation for
 Philanthropy
 Mr. and Mrs. Harold Nations
 Mr. and Mrs. Lawrence Natkin
 Mr. and Mrs. Lawrence P. Neal
 Nebo Systems, Inc.
 Mr. and Mrs. David H. Nelson
 Ms. Evelyn Neu
 New Trier Township High School
 Mr. and Mrs. Jeremy S. Newell
 Mr. and Mrs. Gordon H. Newman
 Mr. and Mrs. Robert Newman
 Mr. and Mrs. Timothy P. Newman
 Ms. Marissa K. Newton
 Mr. and Mrs. Jack Nianick
 Nicchia
 Mr. and Mrs. Anthony M. Nicolli
 Mr. and Mrs. Allan Niederman
 Mr. and Mrs. Arthur C. Nielsen, Jr.
 Mr. and Mrs. Carlos G. Nieto
 Mr. and Mrs. Dan Nishibun
 Mr. and Mrs. Carver Nixon
 Mr. and Mrs. Timothy J. Noffke
 Mr. and Mrs. John K. Nonaka
 Mrs. Rachel B. Norris
 Mr. and Mrs. Richard North
 Ms. Christine Northwick
 Mr. and Mrs. James N. Nowacki
 Nubar, LLC
 Ms. Sharon K. Nyborg
 Mrs. Catherine D. O'Brien
 Mr. and Mrs. Jerome P. O'Connor
 Mr. and Mrs. William E. O'Connor
 Mr. and Mrs. Stephen O'Hara
 Mr. and Mrs. Warren H. O'Neil
 Oakdale Foundation
 Mr. Larry W. Ocker
 Mr. and Mrs. Frank Odiotti
 Mr. and Mrs. Jack D. Olcott
 Mr. and Mrs. James W. Oliver
 Orlando Magic, LTD
 Orthopedic Associates, S.C.
 Mr. and Mrs. James Otis, Jr.
 Overeaters Anonymous
 Ms. Nancy E. Owen
 Mr. and Mrs. Robert S. Paget
 Mr. Bruno Pagliai
 Ms. D.H. Paine
 Ms. Doris M. Paine
 Mr. and Mrs. Marc L. Paley
 Mr. and Mrs. Arthur Pancoe
 Mr. and Mrs. Salvatore Pantaleo
 Mr. and Mrs. Pat Pappas
 Mr. Timothy G. Pappas
 Mr. and Mrs. Charles Parnell
 Mr. and Mrs. Martin J. Paul
 Mr. and Mrs. Robert Paulsen
 Mr. and Mrs. Darren P. Pavlik
 Ms. Laura Pawuk
 Mr. and Mrs. Fred H. Pearson
 Mr. and Mrs. Michael W. Pearson
 Peels Salon Services
 Ms. Jennifer Pence
 Mr. and Mrs. Richard S. Pepper
 Ms. Robin Perlen
 Mr. Herbert M. Perlman
 Mr. Robert J. Peters
 Ms. Eva J. Petersen
 Carl W. Peterson
 Mr. and Mrs. John M. Peterson
 Mr. and Mrs. Kenneth W. Peterson
 Mr. Sherman E. Peterson
 Mr. and Mrs. Thomas F. Peterson
 Mr. and Mrs. Warren I. Peterson
 Ms. Jacquelyne A. Petrie
 Phelps, Lowry & Pruett, PLLC
 Mr. and Mrs. Michael E. Phenner
 Dr. Herbert F. Philipsborn, Jr.
 Mr. and Mrs. Kevin Phillips
 Mr. and Mrs. Edward J. Phillips
 Mr. and Mrs. Lester Phillips
 The Picchietti Family
 Mr. and Mrs. Henry A. Pickard, Jr.
 Mr. and Mrs. Scott E. Pickens
 Mr. and Mrs. Nathan Pickus
 Mr. and Mrs. Mark A. Pignotti
 Mr. and Mrs. Leslie S. Pinsof
 Piser Weinstein Menorah Chapels
 Ms. Judith Pisetzner
 Mr. and Mrs. Albert A. Pisterzi
 Mr. and Mrs. Harold J. Plack III
 Ms. Katherine S. Platt
 Mr. and Mrs. Roger L. Plummer
 Mr. Philip Podulka
 Mr. and Mrs. Daniel R. Pollack
 Mr. and Mrs. Jay M. Pollak
 Mrs. Muriel B. Pollak
 Mrs. Frank Pollen
 Dr. and Mrs. James D. Pollock
 Mr. and Mrs. Mark E. Pope
 Mr. and Mrs. Leonard H. Popowcer
 Popowcer Katten, Ltd.
 C. S. Powell
 Mr. and Mrs. Harold Pratt
 Mr. and Mrs. Jeffrey J. Preston
 Mr. and Mrs. Andrew T. Price
 Mr. and Mrs. John T. A. Price
 Ms. Mary A. Price
 Primal Energy Corporation
 Mr. and Mrs. Joseph Prochaska
 Property Valuation Services, LLC
 Mr. and Mrs. Alex Provenzano
 Mr. Richard Pullia
 Mr. and Mrs. Melvin J. Pulver
 Mr. and Mrs. John A. Puntillo
 Dr. and Mrs. Michael B. Purnell
 Quebecor World (USA) Inc.
 The Queenan Foundation, Inc.
 Ms. Priscilla P. Quinn
 Mr. and Mrs. G. Quirini
 Mr. and Mrs. Barry Quirke
 RCM Laboratories, Inc.
 RDV Corporation
 RSM McGladrey, Inc.
 Dr. Peter K. Rabiah
 Mr. Dalip Raheja
 Mr. and Mrs. Sumner G. Rahr
 Mr. and Mrs. Thomas Rakow
 Mr. and Mrs. Gary Raphael
 Dr. and Mrs. John J. Rapisarda
 Mr. and Mrs. Ceasar Rasalan
 Mr. and Mrs. Seymour Ratsky
 Mr. and Mrs. William B. Ratzler
 Mr. and Mrs. Herbert J. Rauch
 Ms. Connie Raupauch
 Mr. and Mrs. John H. Ray
 Mrs. Albert L. Raymond
 Mr. and Mrs. Lloyd M. Raymond
 Mr. and Mrs. Edwin L. Read III
 Mr. and Mrs. Edward W. Reap
 Mr. and Mrs. John J. Reardon
 Mr. and Mrs. Howard S. Reback
 Mr. and Mrs. Robert Reeder
 Mr. John W. Redmond
 Mr. and Mrs. Brian G. Reed
 Mr. and Mrs. Cordell Reed
 Mr. and Mrs. Merton Reeder
 Dr. and Mrs. Stephen E. Reid
 Janet and Thomas Reimer
 Mrs. Marianne Reinisch
 Mr. and Mrs. Steve Reinisch
 Ms. Beth C. Reinke
 Mr. and Mrs. Alan L. Reinstein
 Mr. and Mrs. Michael Reinstein
 Mr. and Mrs. Charles A. Remsberg
 Mr. and Mrs. John A. Reschke
 Dr. and Mrs. Thomas E. Resnick
 Mr. and Mrs. Richard W. Resseguie
 Revere Mortgage Ltd.
 Ms. Audrey L. Reynolds
 Mrs. Mary F. Reynolds
 Mr. Arthur R. Riberal
 Mr. Richard Riberal
 Mr. and Mrs. Gunther Rice
 Mr. and Mrs. R. L. Richards
 Mr. and Mrs. Gary S. Richman
 Mr. and Mrs. Marc Richman
 Mr. and Mrs. James A. Riddell
 Mr. and Mrs. Thomas G. Riemer
 Right Management Consultants
 Mr. and Mrs. Jack T. Riley, Jr.
 Ms. Barbara Rill
 Ms. Marguerite Riordan
 Mr. Joseph N. Rizzo
 Mr. and Mrs. John V. Roach
 Mr. and Mrs. Ross C. Robbins
 Mrs. David P. Robertson
 Dr. and Mrs. David W. Rochester
 Mr. and Mrs. Gabriel Rodriguez
 Dr. and Mrs. Gustavo C. Rodriguez
 Mr. and Mrs. Thomas Rogers
 Ms. Francine A. Romano
 Mr. Harry Root, Jr.
 Mr. and Mrs. Warren L. Rose
 Mr. Robert Rosecrans
 Mr. Barry S. Rosen and
 Ms. Marjorie Sandlow
 Mrs. Harriet Rosen
 Mr. Ken Rosenbaum
 Mr. and Mrs. Erwin M. Rosenblum
 Mr. and Mrs. John H. Rosenheim
 Mr. and Mrs. David Rosenstein
 Mr. and Mrs. Jacob G. Rosenstein
 The Rosenthal Group, Inc.
 Dr. and Mrs. Robert E. Rosenzweig
 Ms. Lois I. Ross
 Mr. and Mrs. Martin D. Ross
 Mr. and Mrs. Daniel Rossen

Mr. and Mrs. Jerome Rotblatt
 Mr. and Mrs. Herbert L. Roth
 Mrs. Stephen W. Rothermel
 Mr. and Mrs. Warren Rothman
 Mr. and Mrs. Alan Rottman
 Mr. and Mrs. David Rousso
 Dr. and Mrs. John D. Rowekamp
 Dr. and Mrs. Hemant K. Roy
 Mr. Albert G. Rubin
 Mr. and Mrs. Arlen D. Rubin
 Mr. and Mrs. Earl E. Rubinoff
 Mr. and Mrs. Richard Rubinstein
 Richard Rubinstein Limited
 Dr. Wendy Rubinstein and
 Mr. Carl M. Cohen
 Mr. and Mrs. Roger D. Rudich
 Mr. and Mrs. R. John Rudolph
 Mr. and Mrs. Robert R. Rudolph
 Mr. and Mrs. William M.
 Rudolphsen
 Ms. Jolanta Ruege
 Mr. and Mrs. John Ruff
 Mr. and Mrs. Bradley K. Russell
 Mr. and Mrs. James N. Russell
 Rust-Oleum Corporation
 Mr. and Mrs. Edwin Ruthman
 Ryann Whalen, P.C.
 Mr. and Mrs. David Ryndak
 Mr. and Mrs. William R. Ryno
 Ms. Marcia Sabesin
 SXS Trading, Inc.
 Mr. and Mrs. Barry M. Sabloff
 Ms. Susan Sachs
 Mr. and Mrs. Michael B. Sadoff
 Safeway Insurance Company
 Mrs. Joyce Saffir
 Dr. and Mrs. Richard Saffro
 Mrs. Brittney B. Saks
 Dr. Ira S. Salafsky
 Mr. Richard P. Salerno and
 Ms. Susan B. Glenn
 Mr. and Mrs. Hubert S. Sallis
 Mr. and Mrs. Bruce Saltzberg
 Mr. Adam Saltzman
 Mrs. Donald W. Sampson
 Samuels Recycling Company
 Dr. and Mrs. Peter K. Sand
 Mr. Donald R. Sanders
 Mrs. John C. Sanderson, Jr.
 Mr. and Mrs. Joseph M. Santangelo
 Mr. and Mrs. Alan Saposnik
 Mr. and Mrs. Kenneth D. Saunders
 Mrs. John L. Savage
 Mrs. Janet Schafer
 Mr. and Mrs. Arthur A. Scharf
 Mrs. Jane W. Scharf
 Ms. Cristal Schepis
 Mr. and Mrs. George J. Schiavone
 Ms. Marcy Burns Schillay
 Mr. and Mrs. Herbert Schmeisser
 Mr. and Mrs. James Schmidt
 Mr. Paul Schmidt and
 Ms. Courtney Morris
 Mr. and Mrs. Paul M. Schmitt
 Mr. Charles L. Schneider
 Mr. and Mrs. Glen Schneider
 Mr. Herbert Schneiderman
 Mr. and Mrs. Barron W. Schoder, Jr.
 Ms. Susan W. Schreiber
 Mr. and Mrs. Bernard C. Schubert
 Dr. and Mrs. James Edward Schuetz
 Ms. Shannon L. Schuyler
 Mr. and Mrs. Richard D. Schwab
 Mr. and Mrs. Glenn A. Schwartz
 Mr. and Mrs. Joel W. Schwartz
 Mr. and Mrs. Lewis I. Schwartz
 Mr. Charles A. Schweighauser
 Mr. and Mrs. John E. Scully
 Mr. and Mrs. Morton N. Seaman
 Mr. and Mrs. D. Gideon Searle
 Seder Family Foundation
 Mr. and Mrs. David R. Sedlacek
 Mr. and Mrs. J. B. Seelig
 Ms. Nancy H. Segal
 Drs. Peter and Eleanor Segal
 Mr. and Mrs. David R. Seibel
 Dr. and Mrs. Harold Seldin
 Mr. and Mrs. Nick Selimos
 Mrs. Clifford N. Sellie
 Dr. and Mrs. Neville Sender
 Sethness-Greenleaf Inc.
 Mr. David Shabelman
 Mrs. Priscilla R. Shade
 Mr. Ilan J. Shalit
 Drs. Joel and Madeleine Shalowitz
 Shand Morahan & Company, Inc.
 Mr. and Mrs. Neal Shapiro
 Mr. and Mrs. Howard Sharfman
 Mr. and Mrs. Jonathan F. Shaver
 Mr. and Mrs. Charles H. Shaw
 Mr. and Mrs. Nelson Shaw
 Mr. and Mrs. James F. Shea
 Ms. Natalie E. Shefsky
 Mr. and Mrs. Michael R. Shelist
 Mr. and Mrs. Keith Shelton
 Ms. L. Kimmy Shimada
 Mr. and Mrs. William A. Sholten III
 Dr. Gail and Mr. Nathan Shorr
 Mr. and Mrs. Alfred H. Shotwell III
 Mr. and Mrs. Norman Shubert
 Mr. and Mrs. William Sick
 Mr. and Mrs. Stephen M. Sickle
 Mr. and Mrs. Howard J. Siegel
 Mr. and Mrs. Robert L. Sills
 Dr. and Mrs. Burton E. Silver
 Mr. Michael J. Silver
 Mr. and Mrs. Lawrence Silverman
 Ms. Susan Silverman
 Sima Products Corporation
 Mr. and Mrs. Albert Simon, Jr.
 Mr. David Simon
 Mr. and Mrs. Harry D. Simon
 Mr. Matthew Simon
 Mr. William G. Simpson
 Dr. and Mrs. Daniel Singer
 Mr. and Mrs. Scott M. Singer
 Mrs. Helga C. Singwi
 Mr. and Mrs. Richard D.
 Sinsheimer
 Mrs. Roslyn Siskin
 Mr. and Mrs. A. L. Sittaro
 Mr. and Mrs. George Sladoje
 Mr. and Mrs. Howard H. Slater
 Mr. and Mrs. William J. Slezak
 Mr. and Mrs. Gary Slimak
 Dr. and Mrs. Mitchell L. Slotnick
 Mr. Brent M. Smith
 Mr. and Mrs. Ian L. Smith
 Dr. Jennifer and Mr. Brad Smith
 Mr. and Mrs. Chad Smith
 Mr. and Mrs. Mike Smith
 Mr. and Mrs. Robert J. Smith
 Ms. Sandra Smith
 Ms. Sandra B. Smith
 Mr. and Mrs. David W. Snyder
 Dr. and Mrs. Edward Snyder III
 Mr. and Mrs. John B. Snyder
 Mr. Parrish L. Snyder
 Dr. and Mrs. Kim R. Sobinsky
 Society of St. Vincent De Paul
 Ms. Ronnie Jo Sokol
 Mr. and Mrs. Steve Sokal
 Mr. and Mrs. Michael J. Solberg
 Mr. and Mrs. Eugene D. Sollo
 Solomon Smith Barney
 Dr. Harry J. Soloway
 Mr. Ernie Solterman
 Mr. and Mrs. Robert W. Sommers
 Mr. and Mrs. Carl T. Sommers
 Sang Hae Son and Tae Ja Sohn
 Mr. Arthur B. Sontag
 Ms. Deena C. Sorci
 Mr. Benjamin Z. Sosewitz
 Mr. and Mrs. William F. Souder
 The Southern Alliance
 Mrs. Erna Spaeth
 Mr. and Mrs. Matthew Spagat
 Mr. and Mrs. Thomas C.
 Spalding, Jr.
 Mr. and Mrs. Wayne Spath
 Specialized Seating
 Spectrum Group
 Mrs. Frances Spiegel
 Mr. Charles R. Sprowl
 Mr. Joseph Spychalski
 St. Andrews Foundation
 Dr. Van Paul Stamos
 Mrs. Francis R. Stanton
 Starwood Hotels and Resorts
 Worldwide, Inc
 Mr. and Mrs. Gary J. Stass
 Mr. Michael J. Staub and Ms.
 Kathy L. Brock
 Mr. and Mrs. William E. Stein
 Dr. and Mrs. Matthew M. Steiner
 Mr. Paul P. Steinhauer
 Mr. and Mrs. Frank Q. Stepan
 Mr. and Mrs. Chet Stephens
 Mrs. Joan Stephenson
 Mr. and Mrs. Andrew L. Stern
 Mr. and Mrs. Charles M. Stern
 Dr. and Mrs. Steven H. Stern
 Mr. and Mrs. Robert M. Sternberg
 Mr. and Mrs. William L.
 Stickney III
 Ms. Jane E. Stipp
 Lynn Stollberg
 Mr. and Mrs. Michael G. Stoltz
 Mrs. Joanne Storm
 Mr. and Mrs. Edward J. Stransky
 Mr. and Mrs. John G. Strauss
 Mr. Jeffrey D. Stringer
 Mrs. Margaret L. Strotz
 Ms. Gigi Sturgis and
 Ms. Anne Rossiter
 Mr. and Mrs. Philip Stutz
 Merle and James C. Styer
 Franczek Sullivan, PC
 Mrs. Virginia C. Sullivan
 Sun Chemical
 Mr. and Mrs. Richard P. Sutcliffe
 Mr. and Mrs. A. C. Sutherland
 Swansons Blossom Shop, Ltd
 Swartz Environmental Designs, Inc.
 Maurice Swiryn Living Trust
 Dr. and Mrs. Jerry J. Sweet
 Mr. and Mrs. Daniel R. Swett
 Swett & Crawford Group
 Mr. and Mrs. Maurice Swiryn
 Mr. and Mrs. Daniel B. Szeszol
 Ms. Deborah G. Taber
 Mr. Donald G. Tabler
 Mr. and Mrs. Steven J. Taggart
 Mr. and Mrs. Robert Takahashi
 Ms. Mary R. Tapak
 Ms. Marilyn Tarrant
 Mr. and Mrs. G. Gregory Taubeneck
 The Tauber Family Foundation
 Mr. and Mrs. Thomas L. Taylor
 Mr. and Mrs. David Teetor
 Mr. and Mrs. Leonard R. Tenner
 Mr. and Mrs. Allan TeRonde
 Mr. and Mrs. Ronald F. Tesarik
 Mr. and Mrs. Theodore Tesmer
 Mr. and Mrs. Ferdinand Thillens
 Mr. and Mrs. Mark O. Thomas
 Mr. and Mrs. Gary L. Thompson
 Ms. Kristi J. Thompson
 Through The Barn Door Furniture
 Company, Inc.
 Mr. and Mrs. Jeffrey A. Tideman
 Ms. Ann Tiehen
 Timeless Creations, Inc.
 Phyllis F. Tittle Trust
 Mr. and Mrs. Fred Tivin
 Mr. and Mrs. Mark F. Toledo
 Mr. and Mrs. Robert L. Tompkins
 Mr. and Mrs. Leighton Toney
 Dr. and Mrs. Howard Topel
 Mr. and Mrs. Douglas C. Toppin
 Mr. and Mrs. Glenn O. Torgerson
 Total Telecommunications
 Technologies
 Mr. and Mrs. Eugene A. Tracy
 Ms. Jane Tracy
 Mr. Larry A. Tracy, Jr.
 Miriam Welty Trangsrud
 Transora
 Tri Lite, Inc.
 Trio House Sales
 Ms. Rita J. Troeger
 Mr. Lawrence A. Troka
 Mrs. Dona Lee Trotter
 Ms. Charlotte L. Trout
 Dr. Svetlana and Mr. Simon
 Tsipursky
 Mr. Yoshimi Tsujimoto
 Mr. and Mrs. Richard Tucker >>

>>ADDITIONAL GIFTS RECEIVED \$100 TO \$499

Ms. Rebecca C. Tung
 Mr. and Mrs. Reed J. Tupper
 Mr. and Mrs. Charles C. Uchtman
 Mr. and Mrs. Frederick G. Uhlmann
 United Way of Lake County
 Mr. and Mrs. Marc Urowsky
 Mr. and Mrs. Joseph G. Uzelac
 Mr. and Mrs. Joseph J. Vadakara
 Ms. Bernice C. Valantinas and Mr. Jeffrey Roseberry
 Valent Biosciences Corporation
 Dr. and Mrs. Steven J. Valfer
 Mr. and Mrs. Anthony Van Moffaert
 Mrs. Nancy Van Noppen
 Mr. and Mrs. David R. Vasil
 Ms. Lauren Vasilescu
 Mr. and Mrs. Earl H. Vender

Dr. and Mrs. Michael I. Vender
 Burton E. Vergowe Trust
 Mr. and Mrs. Mark Verlinden
 Mrs. Michael J. Verta, Sr.
 Dr. and Mrs. Michael J. Verta
 S.K. and Visitacion Vij
 Mr. and Mrs. Vernon F. Vikingson
 Mrs. Stephanie Empkie Vittum
 Ms. Jane M. Vodvarka
 Vranas & Chioros Realty Group, Inc.
 Mr. and Mrs. William R. Wagner
 Dr. and Mrs. Jerome Waldman
 Mr. and Mrs. Randy Walker
 Mr. and Mrs. Barry R. Wallach
 Mr. and Mrs. Richard A. Walsh
 Mr. and Mrs. Michael H. Walters
 Mr. and Mrs. Andrew Ward
 Warren Sand Company

Mr. and Mrs. Sidney Warshauer
 Mr. and Mrs. Stanley Warshauer
 Mr. and Mrs. Brian M. Washa
 Mr. and Mrs. John C. Wasson
 Mr. and Mrs. Richard B. Waterhouse
 Mr. John S. Waterman and Ms. Dee Brooks
 Mrs. Marjorie H. Watkins
 Watson Wyatt and Company
 Watson Wyatt Worldwide
 Mr. and Mrs. Rollin D. Weary III
 Mr. and Mrs. Clarence H. Weber
 Mr. David J. Webster
 Mr. and Mrs. Frederick F. Webster, Jr.
 Mr. and Mrs. W. Daniel Wefler
 Mr. Quinton B. Wehmer
 Mr. and Mrs. Kenneth R. Weigand

Mr. and Mrs. Julian S. Weil
 Dr. and Mrs. Lowell S. Weil, Jr.
 Mr. David A. Weinberg and Ms. Grace Allen Newton
 Mr. Michael Weinberg, Jr.
 Mr. and Mrs. Arvin Weindruch
 Mrs. Wallace Weinress
 Mrs. Barbara J. Weinstein
 Dr. and Mrs. Neil Weintraub
 Mr. Byron H. Weis
 Mr. Robert A. Weisman and Ms. Audrey E. Selin
 Mrs. Esther Ruskin Weiss
 Mr. and Mrs. Keith H. Weiss
 Mr. and Mrs. Roger M. Weiss
 Dr. and Mrs. Samuel Weiss
 William L. and Josephine B. Weiss Family Foundation
 Mrs. Deborah G. Weixl



“Even though his life was short, we wanted our son’s life to have meaning, and we wanted to keep his memory alive, especially for his brothers. Not only is this a way to honor David’s memory, it is a way to hopefully help other families in similar situations so they won’t have to go through what we went through.”

—
 Elizabeth and Glenn Becker

Mr. and Mrs. Becker are loyal and constant supporters of necrotizing enterocolitis (NEC) research. NEC is a bowel-destroying disease that is the third leading cause of death of premature infants. While they suffered the greatest tragedy of losing one of their premature triplets to NEC, the Beckers and many of their family and friends now mark birthdays, anniversaries and other important dates with a gift for NEC research.

GIFTS WERE MADE IN MEMORY OF THE FOLLOWING:

Mr. and Mrs. William Welnhofer
Mrs. Joseph C. Welsh
Ms. Regan S. Werner
Mr. Ryan Werner
Ms. Mary West
West Deerfield Township
Mr. and Mrs. Michael C. Weston
Ms. Marian Wetterling
Mrs. Edward A. Wheeler
Ms. Ruth M. Wheeler
Ms. Stephanie Whisler
Mrs. Jerome P. Whiston
Ms. Arline M. White
Mr. and Mrs. J. Randall White
Mrs. Jeanne M. White
Ms. Susan J. White
Mrs. Weston Kimball Whiteman
Mr. Dennis E. Wieczorek and
Ms. Marla A. Weiner
Mr. and Mrs. William J. Wienke, Sr.
Mr. and Mrs. Floyd E. Wike
Mr. and Mrs. John W. Wilber
Mr. Perry M. Wilcox
Mr. Robert B. Wilcox
Mrs. Paul A. Wilde
Mr. and Mrs. Marc R. Wilkow
William Blair & Company
Mr. Christopher P. Williams
Ms. Deborah A. Williams
Dr. and Mrs. Thomas P. Williams
Yolanda Williams
Mr. and Mrs. Robert M. Wilson
Mr. and Mrs. Sherwin Winer
Winnetka Community House
Woman's Board
Mr. and Mrs. Robert Winter
Bob and Nina Winter
Mr. and Mrs. Thomas Winter
Mr. Michael L. Winterhack
Ms. Kim Wise
Mr. Robert Witte
Mr. and Mrs. Michael K. Wolf
Mr. and Mrs. Ronald A. Wolski
The Woman's Club of Evanston
Charitable Foundation, Inc.
Mr. Arthur M. Wood, Sr.
Mrs. Henry C. Wood
Mr. and Mrs. Robert A. Woods
Mr. and Mrs. Robert R. Worobow
Mr. Gregory Wright
Wilbur Wright College
Dr. Helen Wu and Dr. Mark Tan
Mrs. Martha Ellen Wynne
Dr. Theodore M. Wynnychenko
Mr. and Mrs. David N. Yaskulka
Mr. and Mrs. Robert R. Yohanan
Mr. and Mrs. Charles R. Young
Mr. and Mrs. Sheldon Young
Mr. and Mrs. George J. Yoxall
Ms. Deborah D. Yurasek
Mr. and Mrs. Leonard E. Zak
Mr. and Mrs. Tanveer Zaman
Ms. Judith Zambrano
Mrs. Belen F. Zangrilli
Mr. and Mrs. Herbert L. Zarov
Mr. and Mrs. Daniel Zazove
Mr. and Mrs. Joseph R. Zednik
Mr. and Mrs. Ned Zellik
Ms. Barbara Ziemiecki
Mr. and Mrs. Willy K. Zimmermann
Mr. and Mrs. Matthew Ziol
Ms. Amy J. Zisook
Mr. and Mrs. Stanley W. Zorc
Ms. Doris M. Zwack

Jean White Abell
Marshall Abraham
Milton and Jen Abramson
Max Acter
Howard J. Agins, MD
Jane S. Allen
M. David Allweiss, MD
Janie J. Ampel
Dawn Holt Anderson
Dixie D. Anderson
Edward Anderson
Elizabeth W. Anderson
Sarah R. Anderson
Stephen Angelescu
Elisabeth Anrod
Susan Bagdade
Jesse H. Barnes
David R. Barnum
Pauline Baron
Patricia Barr
Betsy Bass
Frank E. Bauder
Hans Bauer
John A. Beasley
David A. Becker
Alice Beeftink
Alice R. Behrstock
Hyman Beitler
Donald I. Bell, MD
Juliet D. Bell
Arthur J. Bernardi
Ellen Bernstein
William Best
Marilyn Frye Bettendorf
William Billington
Max E. Binz III
Ina Blackman
Frances Blazer
Nate Boehm
Robert Bogner
William Bogolub
Joie A. Bostick
Mary A. Branch
Joseph J. Brandes
Theodor Braun
Robert Bretland
Melba Brinkman
John L. Brinkworth
John W. Brittingham
Arlen Brodin
Marcus Brooks
Joan Brosnan
Albert Brown
Julie Brown
Nancy N. Buckingham
Edward Burbach
Violet Burns
Jacob N. Byer
Doris Byk
Kenneth Cahn
Steven Caliendo
Mark A. Canmann
Mr. Caplan
Phil and Marie Carlucci
Irwin Carson, MD
Jane Carter
Luther R. Carter, Jr.
Patricia Carter
William Celentano

Bernard Chase
Shirley Cheng
Elizabeth D. Chinnock
Josephine Christopoulos
Frederick T. Clark
Gretchen Clark
Martha Clarke
Bunny Cohen
Violet Cohen
Michele Sue Colby
Katherine Cole
Tawnya Taylor Collins
Mary F. Connelly
Paul T. Cosgrove
Richard Crane
Rose Crivlare
Janice Danesi
Clement H. Darby
Robert Daskal
Diana Davenport
H. Wilbur Davis
Sally Dearborn
Barbara DeGraff
Louis Dehmlow
Fernando Del Castillo
Mary L. Demouth
Shirley DeShavor
Forest Dines
Santina DiPietro
Bert Dolan
Charlotte L. Dombrowski
David W. Duke
Kenneth H. Eckholt
James Eckhouse
Rachel A. Edwards
Donald Egan
Jerrold Elford
Betty F. Elliott
Marshall A. Elman
Beth Ettington
Willard Evans
Flora Facio
David B. Fallon
Diana C. Fang
Sam Farmer
Roselle Feldman
Marvin Fenchel
James Fendley
Thomas L. Fentress
Lenard A. Field
Arsen Fiks, MD
Carole S. Fine
Betty Fisher, MD
Lawrence R. Foerster
Dolores Foley
Sherwin Footlik
Charles Y. Freeman
Winifred Austin Freeman
Harry Fried
Kathy Friedman
Sol Friend
Donald Frissell
Cathy Frooman
Neil Gallagher
Anne Gardner
Norman Garfield
Lorraine Jericho
June Gesas
Lee E. Getschow

Mary Gettleman
Richard N. Ghilarducci
Jeannette L. Ginger
Marcel E. Girod
Emma O. Gitzinger
Carol Glazier
Milton Glickstein
Carol Gluckman
Shirlee Glueck
Victoria Gold
Alan M. Goldberg
Colman and Shirley
Goldberg
Ernest H. Goldberg
Samuel V. Goldberg
Sheela V. Goldberg
Sonny Goldberg
Rae Goldblatt
Stanley C. Golder
Edison Goldsmith
Jacquelynn L. Goldsmith
Barbara Gontovnick
Richard S. Goodspeed
Margaret K. Goodwin
Phyllis Gordon
Jerome S. Gore
Stanley N. Gore
Susan Gorin
Marguerite C. Graham
Edith Grant
Jack Greenberg
Mary Greenman
William Grisko
Helene Grossman
Jerome A. Grossman
Edith A. Grout
Mary Gruber
Raymond L. Guzy
Ruth T. Hagedorn
Abigail P. Halpin
Karen Hamity
Lewis B. Hamity
Hy Handler
Jane Hanley
Stevie Hanson
Mathias Happ
Leo Harris
Susan Harris
Harvey Hartman
Irvin "Buzz" Hartman, Jr.
Paul Hazard
James H. Heald
Mary A. Healy
Carol Hedberg
Susan Heiberger
Jean S. Heidelbauer
Nan Henderson
Warren K. Hendriks
Lars E. Henriksen
Lillian Heppert
Dorothy Hermon
Calvin G. Hexton
Helen Hirsch
Martin M. Hogan
Jeanette C. Hollander
Martin Hollander
Shirley Homer
Olivia Rose Horn
Helen E. Hough
William J. Hough

>>GIFTS WERE MADE IN MEMORY OF THE FOLLOWING:

| | | | | |
|-------------------------|--------------------------|-------------------------|--------------------------|------------------------|
| Kristen Hovda | Paul Levin | Mary Jeanine Orrderdonk | Ruth Schueftan | Frank J. Stuckart |
| Chi Pei Hsueh | Pauline Levin | Viola M. Ostapa | Nicholas J. Schwall | Alma R. Suacillo |
| Jeremy Isaacson | Joyce R. Levy | Mary Butler Owen | Kathy Schwartz | Josephine Swanson |
| Eugene Ivy | Louis L. Levy | Donald Pagel | Michael Schwartz | Ellen Swift |
| Carol M. Jacobsohn | Theresa Levy | Natalie Palmer | Will Schweighauser | Rhoda J. Swirsky |
| Henry J. Janaes | Elaine Lewin | Judy Patience | Steve Scuhl | Geraldine Syncheff |
| Joseph Jensen | Robert T. Lichtenstein | Bonnie G. Patterson | Polly Sebastian | Francesca M. Szeszol |
| Lorraine Jericho | Allen H. Lippitz | David L. Pattis | Ruth Seder | Kathryn E. Tahtinen |
| Susan Mary Guglielmino | Nancy Lippman | William J. Pavey | Jonathan Seidman | Carol Tatera |
| Johnson | Seymour Lipsitt, MD | Ethel Pearlman | Clifford N. Sellie | Sadie Teven |
| Eleanor L. Jones | Zahava Lipton | Marcia Perisin | Marilyn Seward | Frances Teves |
| Robert I. Jones | Sandra A. Listokin | Deborah Perlman | R. Paul Shade | Marie Tillesen |
| Corrine H. Joseph | Anthony Lorenz | Grace Peters | Annella W. Shapiro | William D. Toal |
| Aurelia Jubak | James Lorimer | Carl T. Peterson | Jacqueline Shapiro | Justin Trofast |
| Mollie Kabo | Penny H. Luke | John Pfamatter | Barbara Sharfman | May K. Tsujimoto |
| Steve Kalish | Gary Lyman | Eugenio Picchiatti | Barbara P. Sharp | George C. Turnbull |
| JoAnn Cowhey Kane | Edward E. Mack, Jr. | Morton A. Pierce | Peggy Shenton | Jack Turpen |
| Jean Karger | Michael Maggio | Walter Piotrowski | Lenore T. Sherwin | Patricia T. Utter |
| Albert Kaskel | Lois Mandel | Kathryn Pitz | Jean Sherwood | Claire H. VanSlyke |
| Charlene Katch | Bobby Marcus | Helen Plank | Shlomi Shfir | Joan Vasilescu |
| Sophia A. Katsoulis | Mac and Charlotte Marcus | Irving Polen | Annabelle Shiffman | Muriel Vender |
| Ernest Katz | Lestine Marder | Frank S. Pollack | Annemarie Shimony | Jackie VotaneK |
| Henry Katz | Vetia Massin | Everett Pritikin | Myron B. Shure | Phyllis Votapka |
| Mary T. Keane | Barbara Maxson | Joseph K. Quinn | Katherine L. Siegel | Jack, Joe, and Morgan |
| Omar A. Kenyon | Viola Mazer | Molly C. Quinn | Erna Siemro | Vreeland |
| Jerry Kerman | Patricia S. McCarty | Leila Raden | Frank Siemro | Jennifer Wagner |
| Ray Kirschner | Thomas W. McElin | Lydia Rashman | Pauline Simon | Marcia N. Wagner |
| Charles Kleiman | Diane McIntosh | Philip A. Rashman | Clara Singer | Marion Wagner |
| Dolores A. Klein | Henry Medintz | Celia Rasmussen | Edward Singer | Vernon M. Wagner |
| Susan P. Klein | June Melnick | Albert L. Raymond | John Slade | Lynn Walker |
| Trudy Klein | Beverly Merletti | Wilbur J. Reading | Philip Slattery | Roy Warshawsky |
| Laura Koch | Adolph Meyer | Bonnie Redmond | Evelyn Slibe | Anna Watkin |
| Donald A. Kolakowski | Edwin Michalik | Lucjan A. Regel | Muriel Smith | Jeffrey K. Weatherhead |
| Sheldon Kolber | Arthur G. Michel, MD | Sara Reidy | Lois Soglin | John Weber |
| Norman Kopels | Julia S. Michels | Richard Reinisch | Victoria Sohn | Gerry Weinberg |
| Robert Korth | Ginny Miller | Dawn Scott Reinke | Jerome L. Solomon | Irving Weinberg |
| Zora Kosanovich | Robert M. Miller | Bob Reuter | Laurel B. Sorman | Shirley Weiner |
| Everett Kovler | Ray Milliman | Harry Reynolds | Irene P. Southon | Sol S. Weiner |
| Donald Kowakowski | Betty B. Millner | James Rice | Donna Spantiko | Wallace Weinress |
| Howard Krom | Mary Frances Moore | Ruth Rickles | Jody Springer | Martin Weinstein |
| Amy D. Krucks | Ruth Moore | William Riggs | Betty Spychalski | Kimberly Weiss |
| William Krucks | Mark Moritz | Dolores Rising | Judith St. Clair Rizzo | Seibert Weissman |
| Dorothy Krumsieg | Susan Moschin | Clarence Rissman | Jean G. Stade | Joseph C. Welsch |
| Bennett Kulwin | Alicia O. Mugica | David P. Robertson | Amelia Branch Staffileno | Elsie Westfall |
| Mildred A. Kunstmann | Carol J. Murphy | Al Rockwell | Leon D. Stahl | Harold J. White |
| Dina Kurlansky | Inna Myers | Muriel Ronowski | Herbert Staiger | Vincent J. White |
| E. Stephen Kurtides, MD | S. L. Nanda | Sally Rosenblatt | George Stanger | Ethel Wilcox |
| Marguerite LaBanca | Clarice I. Narens | Sally Rosenfeld | Irving R. Stark | Marion Williamson |
| Larry Laby | Kathleen Neilson | Esther Rosenthal | Larry Steblow | Neal Allen Winer |
| Marie Ladenei | Pamela B. Nellis | George W. Rothschild | Margaret Steinhauer | Lillian Witwer |
| Shirley Lans | Kenneth Newberger | Melville N. Rothschild | Helen Stern | Berenice Wolff |
| Mary Larsen | Mr. and Mrs. Gordon H. | Christine Rowell | Susan Stern | Etta Wolfson |
| Catherine LaScola | Newman's Brother | David Ruttenberg | Eleanor Stich | Henry C. Wood |
| Louis Lason | Jack Newman | Arthur Sabitt | Rebecca S. Stoll | Lawrence H. Wrobel |
| Edward G. Lauterbach | Sean William Ng | Bernard Sadkin | Marguerite L. Storch | Mary Ellen Yanan |
| Arlene Lawrence | Clara Nickovich | Midge Saltzman | Helmut Strangmann | Betty A. Young |
| Samuel Lawton | George Nickovich | Bonnie L. Samuels | | |
| Mr. and Mrs. N. Lazar's | Julius Nieman | Edna Sanborn | | |
| Mother | Jean S. Nilsen | Caroline M. Sand | | |
| Paul Lazar | Jim Nonaka | Herbert Sandlass | | |
| Benjamin Lebow | Ken Nonaka | Julian Saper | | |
| Robert LeClair | Sueko Nonaka | William Schachtel | | |
| Raymond J. Leleniewski | Annette Nussbaum | Charles E. Scharf | | |
| Adina Lencioni | Jack O'Grady | Sonnie Schencker | | |
| Harry Lensky | Susan Ocker | Henry Schiele | | |
| Gus Leontios | Massie Odiotti | Walter F. Schmalzer | | |
| Janet Levi | John Ogletree | Frances E. Schmidt | | |
| Eva Levich | Jerry Oliff | Arthur Schmitt | | |
| Flora Levin | Jeanette Olker | Barbara Schram | | |
| Harold Levin | Lorraine Olson | Jean O. Schreck | | |

GIFTS WERE MADE IN HONOR OF THE FOLLOWING:

Monet Aberin
 Bernard H. Adelson, MD
 Joan Adler
 Shelia Albrecht-Irwin
 John C. Alexander, MD
 Victoria W. Amesbury, MD
 Leon L. Ampel, MD
 Sydney M. Arenberg
 Henry Armstrong
 William Armstrong
 Howard R. Barron
 Robert Barron
 Mrs. Jeffrey W. Bartlett
 Benjamin Becker
 Glenn I. Becker
 Jonathan Becker
 Lillianne Becker
 Ronald H. Becker
 Walter Becker
 Gabriel I. Berlin, MD
 James F. Bernard
 Ira J. Bernstein, MD
 Lawrence P. Bernstein, MD
 Heather and Bill Blackwell
 Robert H. Blanchard
 Robert S. Block, MD
 Michael D. Blum, MD
 James Boruszak
 Gertie Boyarski
 Elizabeth Boyle
 Randall E. Brand, MD
 Arthur Briesch
 Bruce E. Brockstein, MD
 Hal Brown
 Jonathan R. Brown, MD
 Steven V. Brown, MD
 Dan Brusslan
 Stephen J. Bunda, MD
 Margaret Burns
 Richard C. Burnstine, MD
 Ted Bushnell
 Scott L. Byron
 Bertram I. Cain
 David L. Canmann
 Mark F. Canmann, MD
 Michael S. Caplan, MD
 Michael C. Caughron, MD
 Gene Z. Chiao, MD
 Richard Ciesla
 Ivan S. Ciric, MD
 William R. Cohen
 Lynn Cole
 Elizabeth Collins
 Richard Colombik
 Michael A. Conway
 David W. Cromer, MD
 Marjorie B. Cullman
 Shaylee E. Cutler
 Sara S. Dann
 Theodore K. Davis
 Nancy Dettren
 Carol DeVry-Simmons
 Sally Donnelly
 Marla Dorf
 Jerome L. Drapekin
 Arthur D. Dubin
 Nancy Eisenhut
 Elizabeth J. Ellrodt
 Dr. John and Mrs. Virginia
 Elsen
 Adrienne M. Felder
 Mittelman

Geoffrey Fenner, MD
 Inge F. Fox
 George B. Frank
 Michael W. Frank, MD
 Linda Friedman
 Martha Friend
 Thomas H. Gardner, MD
 James K. Gaylord
 Raymond J. Geraci
 Claudine Gerbel
 Elianna C. Gertz
 Victor E. Gidwitz
 Robert M. Gluckman, MD
 Barry R. Goldberg, MD
 Michael J. Goldberg, MD
 Robert H. Goldberg
 Joan J. Golder
 Nancy Goldman
 Lindsay Goldstein
 Paul D. Goldstein, MD,
 Alfredo A. Gonzalez, MD
 Alice Goodspeed
 Robert Gordon, MD
 Richard M. Gore, MD
 Robert Graham
 Dennis Greco
 Barry D. Greenblatt
 David L. Grinblatt, MD
 Walter R. Grobelny, MD
 James S. Grober, MD
 Geoffrey F. Grossman
 Amy Haddad
 Max Haid, MD
 Susan Harkless
 Casey Harris
 Robert Harris
 Marge Hartigan
 Robert Herzog
 Pamela J. Hillman
 Joyce Hirsch
 Edie Hite
 Thomas H. Hodges
 James M. Holland, MD
 Megan Holmes-Anderson
 David M. Ingall, MD
 Gilbert A. Jacobs, MD
 Norman J. Jacobs
 Barbara Johnson
 Cynthia Johnson
 Lawrence D. Joselit
 Leo Kantor
 Bernard Kaplan
 Douglas S. Kaplan, MD
 Morris A. Kaplan
 Rose Kaplan
 Janardan D.
 Khandekar, MD
 Diane Kingwill
 Eva Klein
 Jean B. Knecht
 Buddy Kopald
 Avram R. Kraft, MD
 Richard L. Kraines, MD
 Lawrence M. Krause, MD
 Roger Lambert
 Richard H. Larson, MD
 Richard K. Lee
 Mark Leopold
 Harry J. Levi
 Joey Levy
 Lesly Levy

Mr. and Mrs. Frank M.
 Lieber
 Robert R. Lipsky
 Michael J. Liptay, MD
 Andrew M. Livingston
 Mr. and Mrs. Homer J.
 Livingston, Jr.
 Gershon Y. Locker, MD
 Patrick W. Logan, MD
 Robert I. Logan
 Gwendolyn Lorimer
 Barbara D. Loris, MD
 James O. Lowry, MD
 Ming-Chen Lu
 Torben Luth
 Henry T. Lynch, MD
 Marian S. Macsai, MD
 Elizabeth I. Madden
 Raymond J. Markman
 Bobbi Marks
 Sanford Mason, MD
 Sarah Mayfield
 Joan Kowing McGregor
 Marilyn McKenzie
 Jan McKnight
 Manoj K. Mehta, MD
 Douglas E. Merkel, MD
 Kim C. Meyers, MD
 William Meyers
 Jerome Mitchell
 Harry J. Miller
 Jerald Miller
 Sandy Miller
 Morton S. Moss
 Joseph P. Muldoon, MD
 Dolly Nast
 Jory A. Natkin, MD
 Robert A. Natanson, MD
 Larry J. Neems
 Elizabeth Nichols
 Colleen Novotny
 Jay Patel
 Zachary S. Paul
 Diane Pekow
 Jerry Pekow
 Brad Peterson, MD
 Megan D. Peterson
 Maxine R. Philipsborn
 Edward Pinsof
 Nancy Pleines
 Karma S. Plomin
 Michael Plous, MD
 Barry N. Poll
 Jason Porter
 Michael Porter
 Selwin Price
 Teddi Pritzker
 Radiation Therapy Staff
 Vathsala T. Raghavan, MD
 Gwen Rahr
 David P. Randall, MD
 Joan Raymond
 Nancy Reinisch
 Joel E. Retsky, MD
 Jane E. Richman
 Barbara Rinella
 Gene Robbin
 Catharine F. Rogers
 Leonard H. Rose
 James L. Rosenberg, MD
 Sarah Rosenbloom, MD

Margaret Rosenfeld
 Todd K. Rosengart, MD
 Myra Rowe
 Donald T. Rubin
 Wendy S. Rubinstein, MD
 and Carl Cohen
 Klaus Ruege
 Arthur J. Sabin
 Michael H. Salinger, MD
 Maryann Samors
 Timothy A. Sanborn, MD
 Carolyn Santee
 Marilyn Saypol
 Edward F. Scanlon, MD
 Jeffrey Schlein
 Jayne Schleis
 Mort Schloss
 Ben Schweighauser
 Harry Seigle
 Janet Seitzer
 Nancy Semerdjian
 Ronald A. Semerdjian, MD
 Stephen F. Sener, MD
 Leslie Sevcik
 Edward Shapiro
 Jonathan F. Shaver
 Lyn Shean
 Irving Sheperd
 Bennett R. Sherman, MD
 Daniel H. Shevrin, MD
 Suzanne Shield
 Roger A. Shiffman
 Morton Shulman, MD
 John G. Sickle
 Jason K. Singer, MD
 David Smiley
 Philip J. Smith
 Eugene D. Sollo

Ronald G. Spaeth
 Richard D. Stagl, MD
 Alan Stone
 Lori Strain
 Alice A. Strauss
 Joseph Sullivan
 Steven P. Swiryn, MD
 Joseph W. Szokol, MD
 Christopher Toft
 Howard S. Traisman, MD
 Larry Trepeck
 Tat-Kin A. Tsang, MD
 Dana Turban
 Barbara A. Turf
 Hunt H. Unger
 Bobbie F. Vender
 Jeffery S. Vender, MD
 Nicholas A. Vick, MD
 Timothy V. Votapka, MD
 Betty Warden
 Susan L. Warner, MD
 Stanley Warshauer
 Sophie Waters
 Ruth Weinberg
 Lucile L. Weinress
 Patti White
 John M. Wieland, MD
 David J. Winchester, MD
 David P. Winchester, MD
 Sherwin Winer
 Todd L. Winer
 Edmund Winter
 Sidney Winters
 Joseph Wyse, MD
 Nancy Yalowitz
 Maxine Yellen
 Esther Yntema
 Debra Zis

MATCHING GIFTS HAVE BEEN

RECEIVED FROM THE FOLLOWING:

Abbott Laboratories
 Abbott Laboratories Fund
 Altria Group, Inc
 American Express
 Foundation
 Bank of America Foundation
 Bank One Foundation
 Baxter International
 Leo Burnett Charitable
 Foundation
 CDW
 Capital Group
 Companies, Inc.
 Grainger
 Harris Bank
 Harris Bank Foundation
 Helen V. Brach Foundation
 Illinois Tool Works
 Foundation
 Kemper Foundation

Liberty Mutual Group Fund
 at The Boston Foundation
 MasterCard International
 Maytag
 McDonald's Co.
 Merrill Lynch & Co.
 Foundation, Inc.
 Morgan Stanley Dean Witter
 Northern Trust Bank
 Nuveen Investments
 Peoples Energy
 PepsiCo Foundation
 PPG Industries Foundation
 Smurfit-Stone Container
 Corporation
 Spencer Foundation
 Synopsys Foundation
 Thomson Media
 USG Foundation, Inc.
 Wm. Wrigley Jr. Company
 Foundation
 3M

THE CAMPAIGN FOR EVANSTON NORTHWESTERN HEALTHCARE ...A VISION OF WORLD-CLASS CARE CLOSE TO HOME

We are proud to announce the launch of the most ambitious fundraising effort in our history. This campaign will allow us to make use of the amazing arsenal of new techniques and procedures that promise to change forever our understanding of disease and our delivery of exceptional medical care. Led by Campaign Chairman John R. Walter and Co-Chairman Ellen O'Connor, this community-wide effort will help us combat the serious financial challenges that thwart our ability to seize these opportunities.

We have long valued our reputation for excellence, but we are not complacent. We want to continue to push the standard and make the best possible care available right here in your own community.

Our early efforts to engage support have been most gratifying. As we launch this \$100 million campaign, we have already received gifts and pledges totaling \$69 million. We have been encouraged by the commitment of our Board of Directors, Medical Staff leadership and Senior Management who have pledged 100% participation.

We are especially grateful to the exceptional generosity of our lead donors who have raised the bar and confirmed the importance of our vision:

Mr. and Mrs. Charles R. Walgreen, Jr.

The Charles R. Walgreen Jr. Family

The Healthcare Foundation of Highland Park

—

The Owen L. Coon Foundation

Connie and Tom Duckworth

The Golder Family Foundation

Mr. and Mrs. William B. Graham

Parkinson's Disease Research Foundation

The Daniel F. and Ada L. Rice Foundation

Ruth Cain Ruggles

Mr. and Mrs. John D. Simms /

The Simms Family Foundation

We greatly appreciate the support of all who have participated in the initial and defining phase of this Campaign:

CAMPAIGN DONORS

| | |
|-----------------------------------|--------------------------------------|
| Anonymous | Dr. and Mrs. Dipak C. Jain |
| Mr. and Mrs. William F. Aldinger | Mr. and Mrs. Harry L. Jones, Jr. |
| Mr. Carlyle E. Anderson | Mr. Roy F. Kehl |
| Mr. and Mrs. David B. Anderson | Mr. and Mrs. Richard L. Keyser |
| Mr. and Mrs. Robert D. Appelbaum | Dr. and Mrs. Janardan D. |
| The Auxiliary of Evanston | Khandekar |
| Northwestern Healthcare | Mr. and Mrs. H. Barnard King |
| The Auxiliary of Highland Park | Ms. Denyse C. King |
| Hospital | Mr. and Mrs. Lester B. Knight III |
| Charlene and Bob Baizer | Mr. Thomas H. Konsoer |
| Mr. and Mrs. Lyle Banks | The Estate of Zora Kosanovich |
| Mr. and Mrs. Percy L. Berger, Sr. | Mr. and Mrs. Harry M. Jansen |
| Arnie and Ann Berlin | Kraemer, Jr. |
| Berlin Family Fund | Robert and Myra Kraft Foundation |
| Grace A. Bersted Foundation | Mr. and Mrs. Daniel C. Kriser |
| Mr. and Mrs. Kenneth L. Block | Dr. and Mrs. David Kuo |
| Dr. William D. Bloomer and | Mr. and Mrs. Randall W. Larrimore |
| Ms. Lauren S. Taslitz | Mr. and Mrs. Daniel J. LaVista |
| Mr. and Mrs. Wiley N. Caldwell | Mr. and Mrs. Robert E. Lee III |
| Dr. and Mrs. Michael S. Caplan | R. A. Lenon |
| John and Brook Carl | Mr. and Mrs. Joseph Levy, Jr. |
| Mrs. C. S. Carton | Dr. Martin S. Lipsky |
| The Estate of Mrs. Elizabeth D. | Mr. and Mrs. Homer J. |
| Chinnock | Livingston, Jr. |
| Mr. and Mrs. Donald C. Clark | Mr. and Mrs. David C. Loveland |
| Mr. and Mrs. A. Steven Crown | Mr. and Mrs. William R. Luehrs |
| Mr. and Mrs. Ronald L. Cullum | Mr. and Mrs. Miles L. Marsh |
| Mr. and Mrs. William L. Davis III | Ms. Marilyn McCoy and |
| Ms. Debora M. de Hoyos and | Mr. Charles R. Thomas |
| Mr. Walter C. D. Carlson | Dr. and Mrs. Timothy J. |
| Mr. and Mrs. Edward S. Donnell | McDonough |
| Dr. Robert R. Edelman | Mr. and Mrs. Alan G. McNally |
| Mr. and Mrs. Russell M. Flaum | Mr. and Mrs. Harvey N. Medvin |
| Mr. and Mrs. Robert E. Flynn | Mr. and Mrs. Samuel M. Menco |
| Mr. and Mrs. Gerald P. Gallagher | Dr. and Mrs. Frederick E. Miller |
| Mr. and Mrs. James L. Garard, Jr. | Ms. Marsha J. Miller and |
| Dr. and Mrs. Joseph Golbus | Mr. Steve Birchard |
| Ms. Ilene S. Gordon and | Dr. Charles A. and Joan Mudd |
| Mr. Abram Bluestein | Mr. and Mrs. Steve Murtos |
| Mr. Raymond Grady | Mr. and Mrs. Mark R. Neaman |
| Mr. and Mrs. Jesse Peterson Hall | Mary S. O'Brien |
| Mr. Maurice D. Henery | Mr. and Mrs. James J. O'Connor |
| The Hillebrand Family | Mr. and Mrs. David R. Olejniczak |
| Barbara P. Hochberg Estate | Parkinson's Disease Research Society |
| Mr. and Mrs. Thomas H. Hodges | Mr. Thomas M. Patton |
| Mr. and Mrs. Arthur Holden | Mr. and Mrs. Jerry K. Pearlman |
| Ms. Michele J. Hooper and | Dr. and Mrs. Clayton A. Peimer |
| Mr. Lemuel Seabrook III | Mr. and Mrs. Ellard Pfaelzer, Jr. |
| Mr. and Mrs. Lawrence Howe | Power Construction Company, Inc. |
| Carol Marks Jacobsohn Foundation | |

THE AUXILIARY OF EVANSTON NORTHWESTERN HEALTHCARE ANGEL CAMPAIGN

Mr. John Rau
 Mr. and Mrs. Thomas J. Reiman
 Mr. James M. Renneker
 Dr. and Mrs. William J. Robb
 Ralph Robinson Marital Trust
 Ms. Ellen A. Rudnick and
 Mr. Paul W. Earle
 Dr. and Mrs. Leopold G. Selker
 Dr. and Mrs. Ronald A. Semerdjian
 ServiceMaster
 Mr. and Mrs. John A. Sheridan
 Rich and Sara Silver
 Mr. Douglas M. Silverstein
 Mr. and Mrs. John A. Sirabian
 Mr. and Mrs. Samuel K. Skinner
 Mr. and Mrs. Thomas W. Smith
 Mr. and Mrs. John Snow
 Mr. and Mrs. Ronald G. Spaeth
 Nathan Stagman Trust
 Mr. and Mrs. Neele E. Stearns, Jr.
 Mr. Richard A. Stein
 Ms. Janet Sullivan and
 Mr. Dennis Creaney
 Pam and Joseph Szokol
 Mr. and Mrs. John W. Taylor III
 Mr. and Mrs. Theodore Tesmer
 Mr. and Mrs. Carl D. Thoma
 Mr. J. Mikesell Thomas
 Mr. and Mrs. Daniel R. Toll
 Mr. and Mrs. Raymond C. Tower
 Mr. and Mrs. Larry A. Tracy, Jr.
 Mr. and Mrs. George J. Trezek
 Mr. and Mrs. William S. Turner
 Dr. and Mrs. Jeffery S. Vender
 Dr. and Mrs. Nicholas A. Vick
 Dr. and Mrs. Thomas A. Victor
 The Estate of Mrs. Eleanor P. Voysey
 Mr. and Mrs. Jonathan P. Ward
 Mr. and Mrs. John R. Walter
 Mr. and Mrs. Brian M. Washa
 Mr. and Mrs. Gary E. Weiss
 The Herbert C. Wenske Foundation
 Mr. and Mrs. Miles D. White
 Mr. and Mrs. William J. White
 Dr. and Mrs. David P. Winchester
 Mr. William Wrigley, Jr.
 Mr. and Mrs. Tanveer Zaman

PLATINUM ANGELS \$7,500 AND ABOVE

Joan Kowing McGregor and
 Clyde McGregor
 Mr. and Mrs. Samuel M. Mencoff
 Mark and Susan Neaman
 Mr. and Mrs. John R. Walter

DIAMOND ANGELS \$5,000 TO \$7,499

Mr. and Mrs. Hall Adams, Jr.
 Barbara and Peter Dyson
 Mr. and Mrs. William J. Hagenah III
 Mr. and Mrs. John A. Hagenah
 Mr. and Mrs. Homer J. Livingston, Jr.
 Mrs. George V. Myers
 Cathy and Bill Osborn
 Barbara and Jerry Pearlman
 Leopold and Sheila Selker
 Mr. and Mrs. Charles R. Walgreen, Jr.
 Wm. Wrigley, Jr. Company
 Foundation

EMERALD ANGELS \$2,500 TO \$4,999

Mr. and Mrs. E. Paul Dunn
 Mr. and Mrs. Harold E. Foreman, Jr.
 Grainger
 Harris Bank
 Mr. Richard A. Lenon
 Orren Pickell Designers & Builders
 John and Mary Raitt
 Mr. and Mrs. Ronald G. Spaeth
 Swanson, Martin & Bell
 Robert and Diane White

SAPPHIRE ANGELS \$1,000 TO \$2,499

Susan and Henry Berghoef
 Howard and Carol Bernick
 Mr. and Mrs. James A. Bovaird III
 Mrs. Judson B. Branch
 Mr. and Mrs. John M. Brannigan
 Caldwell Family Foundation
 Chapman Charitable Foundation
 The Clark Family Foundation
 Crate and Barrel
 Mr. and Mrs. A. Steven Crown
 Kent and Liz Dauten
 Mr. and Mrs. Robert O. Delaney, Sr.
 Dr. and Mrs. Jorge del Castillo
 Mr. and Mrs. Frederick S. Fox
 Mr. and Mrs. J. P. Gallagher
 Hugh and Doris Gilbert
 Ms. Ilene Gordon and
 Mr. Abram Bluestein
 Handelsman Family Foundation
 Denis and Sondra Healy/Turtle Wax
 Mr. and Mrs. Jeffrey H. Hillebrand
 Hollister Incorporated
 Mr. and Mrs. Edward R. James

Mr. and Mrs. John Keller
 Katy and Pat Kennedy
 Mr. and Mrs. James D. King
 Rosemary and Dan LaVista
 Adrienne and Lou Lower
 Dr. Marian S. Macsai and
 Mr. Jack S. Kaplan
 Mr. and Mrs. Miles L. Marsh
 Mr. and Mrs. John H. McDermott
 Dr. and Mrs. Timothy J. McDonough
 Mr. and Mrs. Benjamin A. McKnight
 Mr. and Mrs. A. Gerson Miller
 Mr. and Mrs. Herbert J. Miner II
 Nancy and Charles Moore
 Susan and Nick Noyes
 Mr. and Mrs. David R. Olejniczak
 Mr. and Mrs. Clayton A. Peimer
 Jerry and Diane Pekow
 Mr. and Mrs. Donald S. Perkins
 Dr. Howard and Jean Rice
 Scott Byron & Company
 Douglas M. Silverstein
 Mr. and Mrs. James E. Sloan
 Mr. and Mrs. Neele E. Stearns, Jr.
 Mr. and Mrs. John W. Taylor III
 The Carl & Marilyn Thoma
 Foundation
 Mr. and Mrs. Raymond C. Tower
 Mr. and Mrs. Gene Turban
 Mr. and Mrs. Scott D. Turban
 United Stationers Inc.
 Mr. and Mrs. Frederick H. Waddell
 Mrs. William T. White, Jr.
 William Blair & Company, LLC

PEARL ANGELS \$500 TO \$999

Helen Ashley
 Mr. and Mrs. Robert H. Bacon
 Mr. and Mrs. Joseph L. Baughman
 Mr. and Mrs. D. Theodore Berghorst
 Mr. and Mrs. George H. Bodeen
 Ed and Sheila Bradley
 Mrs. Robert H. Burnside
 Dr. and Mrs. Richard C. Burnstine
 Mr. and Mrs. Conway C. Burton
 Carol and Tom Butler
 Mr. and Mrs. John E. Corrigan
 Lawrence and Charlotte Damron
 Dickerson Engineering, Inc.
 Dr. Leon H. and Carol Dragon
 Mr. Frank B. Foster
 Mr. and Mrs. Willard G. Fraumann
 Dr. and Mrs. Tony S. Fu
 J. Patrick and Anne M. Gallagher
 Mr. and Mrs. James L. Garard, Jr.
 Mr. and Mrs. Raymond I.
 Geraldson, Jr.
 Mr. and Mrs. George Gilmore
 John D. Gray
 Kay Gurtin
 Dr. and Mrs. Paul J. Hauser >>

>> THE AUXILIARY OF EVANSTON NORTHWESTERN HEALTHCARE ANGEL CAMPAIGN

Dr. and Mrs. Frederick Hess
 Robert and Norma Hoaglund
 Howard and Susan Jessen
 Mr. and Mrs. Charles L. Johnson
 Mr. and Mrs. Jay B. Johnston
 Mr. and Mrs. William N. Krucks
 Mr. and Mrs. Larry Kugler
 Mr. and Mrs. Robert G. Lane
 Bonnie and Jay Lytle
 Gwen Macsai and Paul Goren
 Lisa and John McClure
 Mr. and Mrs. Arthur J. McGivern
 Mr. and Mrs. Richard Metzler
 Philip K. and Nancy Miller
 Thomas and Susan Moran
 Mr. and Mrs. Richard M. Morrow
 Mr. Robert S. Nellis
 Susan and Mark Nystuen
 Mr. and Mrs. Dennis B. O'Malley
 Jane R. Perlman
 Mr. and Mrs. John M. Richman
 Sam's Club, Evanston
 Dr. Richard K. and Carolyn Santee
 Mr. and Mrs. John S. Schauer
 T & C Schwartz Family Foundation
 Nancy and Ron Semerdjian
 Springfield Service Corporation
 Mr. and Mrs. Timothy N. Thoelecke
 Dr. and Mrs. Jeffery S. Vender
 Dr. and Mrs. Nicholas A. Vick
 Dr. and Mrs. Thomas A. Victor
 Mr. and Mrs. Kenneth A. Von Kluck
 Dr. and Mrs. Timothy V. Votapka
 Barbara H. West
 Elizabeth B. Yntema
 Mr. Wendell J. Young

**AMETHYST ANGELS
 \$250 TO \$499**

Mr. and Mrs. Edward C. Anderson
 Mr. and Mrs. Robert Balsley
 Mr. and Mrs. Norman Bobins
 Mr. and Mrs. David P. Bornhoeft
 Mr. and Mrs. Edwin B. Bosler
 Dr. and Mrs. Joseph A. Caprini
 Mr. and Mrs. Robert Chodos
 Mr. and Mrs. Henrik Clausen
 Mr. and Mrs. Dewey B. Crawford
 Dr. and Mrs. David Cromer
 Sally and Bob Cunningham
 Jeff and Paula Danoff
 Mr. and Mrs. Frank DeFrank
 Mary and Frank Ehmman
 Mr. and Mrs. David Ellis
 Mrs. Sally M. Fetzer
 Mr. and Mrs. Robert E. Flynn
 Mr. and Mrs. Arthur A. Frank, Jr.
 Dr. and Mrs. Mark L. Franklin
 Pat and Bill Frey
 Mr. and Mrs. Richard I. Gavin
 Mrs. Paul W. Guenzel
 Mr. and Mrs. Joseph G. Hagee
 Mrs. Harold H. Hines
 Dr. Richard A. Hirschmann
 Mr. and Mrs. Mark A. Hoppe
 Eileen and David Hovey
 Alexandra Janet
 Ms. Patricia M. Johnson
 Mr. and Mrs. Robert S. Julian
 Mr. and Mrs. Walter Kasten
 Margie and John Kerr
 Amita and Janu Khandekar
 Mrs. David B. Kingwill
 Mr. and Mrs. Richard P. Kiphart

Mary Koczowski
 Dr. and Mrs. David Kuo
 Mr. and Mrs. Richard Lipton
 Mr. and Mrs. James D. Lyons
 Mr. and Mrs. Rocco Martino
 Mr. and Mrs. Paul L. Mohling
 Mr. and Mrs. Owen A. Moran
 Jerry and Lorry O'Connor
 Mr. and Mrs. William E. O'Connor
 John and Diane Patience
 Dorothy S. Ruderman
 Sethness-Greenleaf Inc.
 Mr. and Mrs. Richard L. Sevcik
 Mr. and Mrs. James F. Shea
 Mr. and Mrs. D.J. Shinkle
 Susan and George Sladoje
 The Spinney Family
 Dr. and Mrs. Harry Staffileno, Jr.
 Dr. and Mrs. Steven H. Stern
 Mr. and Mrs. William Stickney
 Mr. and Mrs. Edward J. Stransky
 Mr. and Mrs. Robert L. Tompkins
 Mt. Leighton Toney and
 Ms. Jocelyn Hamlar
 Mr. and Mrs. Reed J. Tupper
 Mr. and Mrs. Rollin D. Weary III
 Susan and Arvin Weindruch
 Susan J. White
 Mrs. Weston Kimball Whiteman
 Mr. and Mrs. Richard M.
 Woldenberg
 Dr. Theodore M. Wynnychenko
 Alice and Herb Zarov

**GARNET ANGELS
 \$100 TO \$249**

Andy and Genny Adsit
 Mr. and Mrs. Robert J. Alt
 Mr. and Mrs. James Andress
 Dr. and Mrs. Michael G. Ankin
 Mr. Richard W. Ashley
 Mr. and Mrs. Floyd Babbitt
 Mr. and Mrs. Samuel C. Badger
 Mr. and Mrs. John W. Baird
 Mr. and Mrs. Ronald Banas
 Lynda Barber
 Mrs. H. Charles Becker
 Mr. and Mrs. Randall B. Becker
 Ann and Arnie Berlin
 Mr. and Mrs. Karl Berolzheimer
 Mr. and Mrs. Samuel J. Besant
 Nancy and Dick Blackwell
 Judith and L. Kean Block
 Dr. William D. Bloomer and
 Ms. Lauren S. Taslitz
 Dr. Rebecca and Mr. Daniel
 Blumenthal
 Mr. Jim Boyer and Mrs. Elizabeth
 Burtelov
 Mr. Terence P. Brennan
 Brian and Margaret Brodeur
 Mr. and Mrs. Allan S. Brodsky
 Edi and Ken Burns
 Mr. and Mrs. Robert N. Burt
 John J. Cahill, Inc.
 Bruce and Mary Callow
 Mr. and Mrs. Donald Carlin
 Mr. and Mrs. Robert R. Carpenter
 Connie and Brian Casey
 Drs. Michael and Jean Cavanaugh
 Mr. and Mrs. John N. Chapin, Jr.
 Julie and Josh Chernoff

“Being part of the process to decide how my money is spent is very important to me. With the doctors at Evanston I feel like we are partners. I value the insider’s perspective I have, and the knowledge I’ve gained from working with the physicians. We’ve worked together on soul-searching and brainstorming and I believe I’m supporting a very important project that will help the public with valuable information related to genetics.”

Dee Murdough

A long-time friend of Evanston Northwestern Healthcare, Dee Murdough has given vital support for medical genetics in memory of her husband Charlie, and her friend Susan Heiberger who both died from cancer.



| | | | |
|---|--|---|--|
| Mrs. Alex Cichowski Dr. and Mrs. Scott B. Cienkus Dr. and Mrs. Ivan S. Ciric Mr. and Mrs. Neil S. Clemmons Ann S. Cole Mr. and Mrs. Bruce Coleman Mr. and Mrs. John Collins Barbara B. Coninx Mr. and Mrs. Matthew Connelly Mrs. Betty Ann Cratty Mrs. Sandra K. Crown Mrs. Arnold Curry Margaret A. Dennis Mr. and Mrs. James R. Dolphin Lin and George Drake Peggy and Steve Dyer George and Suzanne Eberle Herb and Janet Emmerman Erika Erdbeer Mr. and Mrs. Hyland B. Erickson Leslie Farmer Mrs. Holden K. Farrar, Jr. Elaine E. Farrell, MD Ms. Susan Nicholas Fasciano Mrs. J. Olof Fellman Mr. and Mrs. Thomas Filippini Dr. and Mrs. Philip J. FitzSimons Mr. and Mrs. Mark A. Fuller III Neil and Marge Gambow Mr. and Mrs. John Geocaris Mr. and Mrs. Steven R. Gerbel Mrs. Robert Gerrie Diane Getschow Louis W. Gierke John and Joan Gilchrist Mr. James Gillespie Mr. and Mrs. Michael Goldfine Mr. and Mrs. Louis B. Goldman David and Julia Hauldren | Mr. and Mrs. Wayne R. Hannah, Jr. Mr. and Mrs. Breck F. Hanson Michael and Barbara Harper Mr. and Mrs. Thomas M. Harris Robert E. Heiberger Mr. Jack Hiller Mr. and Mrs. Philip Holland Dr. Julie S. Holland Mr. and Mrs. Lawrence Howe Mr. and Mrs. Philip G. Hubbard Pamela J. Hutul Dr. and Mrs. David M. Ingall Bill and Kathy Jackson Mr. and Mrs. Tom Jagielo Steve and Rosalie Johnston Mr. and Mrs. David Kahnweiler Deanna and Arnold Kaplan Mrs. Sidney Kaplan Mr. and Mrs. Granger F. Kenly, Sr. Mr. and Mrs. John T. Kibler Mr. and Mrs. Richard Kirsch Anita and Andy Koszyk Mr. and Mrs. L. J. Robert Kuo Mr. and Mrs. William Kuo Mrs. Gilbert Lebkuecher Dr. and Mrs. David Lerner Mr. and Mrs. Stephen Levy Mr. and Mrs. Edward E. Mack III Mrs. June P. Mack Jan Marx Lynn and Richard Mathias Mr. and Mrs. Bert J. Maxon M. Finley Maxson Russ and Ann Mayerfeld Dr. and Mrs. William P. McKeever Douglas E. Merkel, MD Peter and Jenna Merlin Dr. and Mrs. Buel Morley John and Nonie Morris | Mr. and Mrs. Carl F. Mueller Mrs. Deanne Murdough Dr. and Mrs. E. Dennis Murphy Dr. and Mrs. R. K. Nanda Roberta and Robert Nash Dr. and Mrs. Bruce E. Noxon Mr. and Mrs. Stephen O'Hara Mrs. James Otis, Jr. Nancy E. Owen Fred and Merry Ann Pearson Mr. and Mrs. Thomas F. Peterson Mr. and Mrs. Kenneth W. Peterson Mr. and Mrs. Henry A. Pickard, Jr. Mr. and Mrs. Jay Pollak Mrs. Frank Pollen Mrs. Donald L. Porth Gail and Jerry Prassas Mr. and Mrs. Joseph Prochaska Sumner and Gwyn Rahr Mr. and Mrs. Thomas S. Rakow Mr. and Mrs. William B. Ratzer Mr. and Mrs. Robert Reder Dr. and Mrs. Stephen E. Reid Marianne Reinisch Mr. and Mrs. Steven Reinisch Mr. and Mrs. James A. Riddell Katherine and Jack Riley Mrs. Stephen W. Rothermel Karen and Ed Ruberry Mr. and Mrs. James N. Russell Mr. and Mrs. William R. Ryno Mr. and Mrs. Barry M. Sabloff Mrs. Donald W. Sampson Dr. and Mrs. Peter K. Sand Mrs. John L. Savage Mr. and Mrs. John E. Scully Drs. Peter and Eleanor Segal Mr. and Mrs. Charles H. Shaw | Keith and Deborah Shelton Dr. Daniel H. Shevrin Mr. and Mrs. William A. Sholten III William G. Simpson David and Theresa Snyder Rob and Teresa Sommer Mr. and Mrs. William Fritz Souder Mr. and Mrs. William E. Stein Mr. and Mrs. Richard P. Sutcliffe Jill Teitelbaum and Buddy Meyers Mr. and Mrs. Allan TeRonde Mrs. Phyllis F. Tittle Mark and Debora Toledo Mr. and Mrs. Eugene A. Tracy Jane Tracy V. J. Killian Co. Mrs. Michael J. Verta, Sr. Dr. and Mrs. Thomas A. Victor S.K. and Visitation Vij Mr. and Mrs. Harv Wagley Mr. and Mrs. Robert G. Walker Mr. and Mrs. Michael H. Walters Clark and Joan Weber Mr. and Mrs. Frederick F. Webster, Jr. Mrs. Edward A. Wheeler Mr. and Mrs. William J. Wienke, Sr. Mr. and Mrs. Thomas Winter Rose Marie and Ronald Wolski Arthur M. Wood, Sr. Mr. and Mrs. Robert R. Yohanian Mr. and Mrs. Joseph R. Zednik |
|---|--|---|--|

THE AUXILIARY OF HIGHLAND PARK HOSPITAL ANGEL CAMPAIGN

PLATINUM ANGELS \$100,000

The Herbert C. Wenske
Foundation

DIAMOND ANGELS \$5,000 TO \$7,499

Mrs. H. Earl Hoover

EMERALD ANGELS \$2,500 TO \$4, 999

Edith Rosskam

SAPPHIRE ANGELS \$1,000 TO \$2,499

Gail and Alan B. Anixter
Mr. and Mrs. Robert Appelbaum
Marjorie and Howard Barron
Eckenhoff Saunders Architects, Inc.
Anita and Richard Gilford
Joan J. Golder
Mary and Bruce Goodman
Dorothy and Richard Gutstadt
Bonnie and Joel Haber
Homer and Marge Livingston
Joan and Herbert Loeb
Elaine and Richard Loewenstein
Patti and Mark Nahin
Mary O'Brien
Alice and Ellard Pfaelzer, Jr.
Jim Renneker
Warner A. Rosenthal
Mr. and Mrs. Don Roth
Shirley and John Schlossman
Sheila and Ron Spaeth
Avy and Marcie Stein
Ferne and Howard Stone
Nadine and Richard Woldenberg
Ann and Arnold Wolff

PEARL ANGELS \$500 TO \$999

Mrs. William N. Anspach
Mr. and Mrs. William Bronner
Laura K. Fisher
Hollister Incorporated
Nancy and Robert Lipsky
Ginny Schulte
Julie and Loren Stone
Mr. and Mrs. Nat Zivin

AMETHYST ANGELS \$250 TO \$499

Julie L. Baer
Joanna and David Brofman
Hortense and Lewis Coplan
Louis & Ruth Kahnweiler Family
Foundation
Rosemary and Dan LaVista
Jodi and Paul Loeb
John Q. McKinnon
Dr. Douglas and Barbara Merkel
Toby and Gordon Newman
Alice and John Strauss
Marilyn and Bob Winter

GARNET ANGELS \$100 TO \$249

Anonymous
Barbara Appelbaum
Gail and Arnold Baron
Mr. and Mrs. Edward Bazelon
Janice and H. Bruce Bernstein
Kimberly and Lyle Cohen
Dr. Scott and Gail Cooper
Gabrielle Cummings
Harriet and Edward Elukin
Marjorie and Richard Ettlinger
Mr. and Mrs. Jim Herst
Patricia and Robert Kroll
Nancy R. Levi
Donald and Maureen Liebenson
Mr. and Mrs. David Loveland
Gloria and Michael Morison
Laurie and Alan Reinstein
Lauren and Daniel Rossen
Mr. and Mrs. Kenneth Saunders
Sharon and James Schmidt
Lewis I. Schwartz
Nancy Semerdjian
Jami and Howard Sharfman
Mr. and Mrs. Julian S. Weil
Marion and Charles Young
Martha and Shel Young

MYRA RUBENSTEIN WEIS HEALTH RESOURCE CENTER ANNUAL BENEFIT LUNCHEON

SPECIAL SPONSORS

Dr. Paul and Eileen Rubenstein
Goldstein
The Family of Mr. Morris P. Kaplan

ANGEL**\$2,500 TO \$4,999**

Maxine and Harvey Yellen

HUMANITARIAN**\$1,000 TO \$2,499**

David and Linda Clark
Phil and Edye Gershman
Gloria Kase
Mr. Benjamin Kende/Benjamin
Kende Photography
Gary and Janet Resnick
Howard and Millie Rubenstein
Robert and Jane Sarnoff
Barry and Mary Schreibstein
Roger and Carol Shiffman

LIFESAVER**\$500 TO \$999**

Patti Friedman
Paula Golden
Ann Hankin
Dr. Steven and Sheri Kase
Mrs. Kim Madden and Mrs. Inge
Knauz/Knauz Auto Group
Dr. Ken and Sandy Krebs
Mary O'Brien
Dori Resnick

HEALER**\$200 TO \$499**

Merle Barack
Dr. Bruce and Patty Berkson
Jan Brenner
Monica Dakoff
Alan Davidove
Morton Einbinder
Adrienne Fishman
Dr. Jordan Goldstein

Minette Faye Goldstein
Carol Goodman
Rosalyn Grossman
Lana Unlimited Co.
Janet Lopin
Karen Marshak
Arlyn Nevel
Nicchia
Judith Pisetzner
Roger and Joanne Plummer
Nancy L. Pollack
Lorelei Rosenthal
Janet Schafer
Susan Schreiber/Diamond
Schreiber Homes
Tina Schmidt
Janice Schrimmer
Dr. and Mrs. Harold Seldin
Gene and Lenore Sollo
Inez Tivin
Dr. Steven and Beverly Valfer
Kim Weintraub

WARM HEARTS**\$100 TO \$199**

A Punto Handbags & Accessories
Peggy Abeles
Linda Alpert/Affairs with Linda
Barbara Appelbaum
Phyllis Applebaum
Bea Azriel
Joyce Baritz/Sidney Baritz
Foundation
Marilyn Baskin
Susan Bass
Lynne C. Belsky, MD
Mr. and Mrs. Robert Bensman
Barbara Berger, MD
Mickie Berman
Sharen Berman
Jane Bernstein
Annette Blumberg
Mr. and Mrs. Ed Blumberg
Mr. and Mrs. Elmer Burack
Ms. Sheila Buti-Saltzman
Naoma Cahr

Marilyn Carlson
Dr. and Mrs. Albert Chams
Miriam Chaplik-Prober
Mrs. Merle Cohen
Marilyn Dann
Mrs. Karyn Davidman
Designs by Denise
Dr. Leon and Carol Dragon
Mr. Maynard Duboe
Davida Dulin
Mrs. Ana Ehrenpreis
Lana Eisenberg
Lynn Engel
Sydney Engel
Marta Evans
Judith Farah
Cathy Feiger
Saerree Fiedler
Charlotte Fink
Roberta Fink
Jackie Friedman
Lila R. George
Mrs. Laura Gerber
Barb Gluckman
Brenda Goffen
Barbara Goldberg/Hair Response
Sherry Goldberg
Rochelle Goldman
Mrs. Minnie Goldsmith
Mrs. Marcia Greenberg
Mrs. Beth Gross
Mrs. Helen Haber
Randi Heichman
Mr. Joel Hirsch/St. Andrews
Foundation
Ann Dee Holland
Susan Holland
Linda Israel
Rhonda Jacobson
Mr. and Mrs. Joel Kagan
Jane Kaplan/Jane Kaplan
Communications
Howard Kaplan
Theodora Karras
Mrs. Judy Katz
Shelley Korey

Mrs. Albert Kotler
Edie Dawn Kreiter
Marcia Kronenberg
Rabbi Vernon Kurtz/North
Suburban Synagogue Beth El
Helene Lachman/Lachman
Foundation
Mrs. Cheryl Lapin
Rosemary and Dan LaVista
Mr. Richard A. Lenon
Gloria Levine
Joyce Levinstein
Mrs. Evan and Sheree Lipkis
Relli Miller
Mr. Steve Miller
Margot Nathan
Barbara Nathanson
Joyce Persky
Ada Rabinowitz
Pamela Redfern
Dr. Carol Rosenberg and Dr.
Gordon Derman
Mr. and Mrs. Alan Ross
Mrs. Ruth Ross
Mrs. Karen Roth
Gabrielle Rouso
Rhonda Salins
Roberta Saull
Mrs. Mary D. Savin
Mrs. Arlene Segal
Mrs. Helene Shaevitz
Rhoda Shapiro
Ms. Natalie Shefsky
Mrs. Elaine Shepp
Mrs. Bertha Shraer
Susan Siegel
Tami Slade
Elyse Jacobs Stern
Terrie Stickler
Roberta Sultan
Sandy Topel
Janis Trossman
Helen Weisman
Mrs. Veronica Zaman
Sheree Zaslavsky

GUSTO RISTORANTE
ITALIANO EVENT

Action Services
Mr. and Mrs. Kenneth D. Benca
Mr. and Mrs. Kim Kolflat
Kolfalt Systems/Norge Software
Lin-Mar Motors, Inc.
Gusto Ristorante Italiano
Mr. Peter Pfister
Mr. and Mrs. Louis Roberts
Ms. Judith Sigale
Mr. W. F. Wheeler

THE ASSOCIATE BOARD OF EVANSTON
NORTHWESTERN HEALTHCARE

Mai Lin Noffke, *Co-Chair*
Jonathan Shaver, *Co-Chair*

Neville Bilimoria
Alexandra Cooney
Thomas Cooney
Becky Dadura
Jim Dadura
Kevin Finger
Christine Foley
Andrew Hochman
John Kiley
Stephanie Newell McCabe
Dave McNeela
Laura McNeela
Tim Noffke

Ram Padmanabhan
Leslie Parnell
Cristal Schepis
Christina Shaver
Brent Smith
Laura St. Pierre
Andy Ward
Kerry Ward
Stephanie Whisler
Stephanie Winter

SAKS FIFTH AVENUE KEY
TO THE CURE COMMITTEE

Barbara Paget, *Chairperson*

Helga Bagan
Lynn Barron
Leonard Eiseman
Robbie Eiseman and Dawn Cunningham
Steve Eiseman
Judy Gimbel
Marie W. Harris
Susan Kahn
Vivian Lembeck
Elsie Loeb
Cathy Eiseman Nemeth and Dan Nemeth
Betsey Pinkert
Bunny Resnick
Betsy Rosenzweig
Dee Sherman
Marion Simon
Bunny Tasner
Nancy Weil
Gloria Zieve

“We think it is terribly important to maintain this institution that provides the high quality of care the community so richly deserves.

We’ve always felt the care we get here is equal to or better than what we would receive anywhere and we value being so close to home with the doctors we’ve come to know and trust. It is wonderful to have the additional resources at Highland Park Hospital that came with the merger.”

—
Ellard and Alice Pfaelzer

Mr. and Mrs. Pfaelzer are Life Directors of Highland Park Hospital, recognizing the service and support they have provided in a variety of capacities for more than two decades.



THE MYRA RUBENSTEIN WEIS HEALTH RESOURCE CENTER ANNUAL BENEFIT LUNCHEON COMMITTEE

Mrs. Chana Anderson
Mr. Dennis Anderson
Mrs. Laurie Aronson
Ms. Rhoda Bearman
Mrs. Mickie Berman
Mrs. Sharen Berman
Ms. Marlene Blitstein
Ms. Nancy Blum
Mrs. Annette Blumberg
Mrs. Johanna Brainin
Mrs. Sharon Burack
Mrs. Naoma Cahr
Mrs. Eda Carroll
Mr. David Clark
Ms. Julie Clark
Mrs. Linda Clark
Ms. Lisa Cooper
Ms. Sherry Cooper
Mrs. Monica Dakoff
Mrs. Karyn Davidman
Mrs. Arlene Demb
Mrs. Lana Eisenberg
Ms. Judith Farah
Ms. Janice Fern
Mrs. Marcy Filinson

Ms. Adrienne Fishman
Ms. Jackie Friedman
Ms. Lauren Beth Gash
Mrs. Edye Gershman
Mrs. Barbara Gluckman
Mrs. Ellyn Gold
Mrs. Paula Golden
Mrs. Eileen Rubenstein Goldstein
Ms. Minette Goldstein
Mrs. Carol Goodman
Ms. Linda Gordon
Mrs. Marcia Greenberg
Mrs. Susan Haimes
Mrs. Ann Hankin
Mrs. Sherry Harrison
Mrs. Adrienne Heiman
Ms. Esther Hirsch
Mrs. AnnDee Holland
Mrs. Rhonda Jacobson
Ms. Jane Kaplan
Mrs. Gloria Kase
Mrs. Sheri Kase
Mrs. Judy Katz
Ms. Shirley Kaufman
Ms. Francis Krasnow

Mrs. Sandra Krebs
Mrs. Pamela Levin
Dr. Sheree Lipkis
Ms. Sue Masaracchia-Roberts
Ms. Leila Mattes
Hon. Karen May
Ms. Marilyn Meyers
Mrs. Lynda Miller
Mrs. Marlene Milner
Mrs. Miffie Nagorsky
Mrs. Debbie Nieto
Mrs. Elaine Ordower
Mrs. Shari Paset
Ms. Pam Passis
Ms. Leenie Perraud
Ms. Judy Pisetzner
Mrs. Anita Poll
Mrs. Ada Rabinowitz
Mrs. Janet Resnick
Ms. Sheila Riebman
Mrs. Sandy Rosen
Dr. Carol Rosenberg
Mrs. Lorelei Rosenthal
Mrs. Mildred Rubenstein
Ms. Rhonda Salins

Mrs. Jane Sarnoff
Ms. Roberta Saull
Mrs. Janet Schafer
Ms. Susan Schreiber
Mrs. Mary Schreibstein
Ms. Maureen Schwartz
Ms. Arlene Segal
Mrs. Rhoda Shapiro
Mrs. Carol Shiffman
Ms. Nancy Siegel Streifler
Mrs. Tami Slade
Mrs. Beverly Slovin-Reinglass
Mrs. Lenore Sollo
Mrs. Rebecca Sostrin
Mrs. Inez Tivin
Mrs. Beverly Valfer
Mrs. Lynn Weingardt
Mrs. Kim Weintraub
Ms. Sari Weis
Mrs. Judy Weiss
Ms. Enid Wenig
Mrs. Helen Wiseman
Mrs. Maxine Yellen
Ms. Laurie Young
Mrs. Sheree Zaslavsky

BOARD OF DIRECTORS

Homer J. Livingston, Jr., Chairman

William F. Aldinger
Chairman and CEO
Household International

Cathy C. Anderson, Esq.
Senior Vice President and
General Counsel
TruServ Corporation

Lyle Banks
President and CEO
Banks Broadcasting Inc.

Percy L. Berger
Managing Partner
Dempster Group LLC

John L. Carl
Retired Senior Vice President
and CFO
Allstate Corporation

A. Steven Crown
General Partner
Henry Crown and Company

Ronald L. Cullum
Retired Partner
Accenture

William L. Davis
Chairman, President and CEO
R. R. Donnelley & Sons Company

Debra de Hoyos
Managing Partner
Mayer, Brown, Rowe & Maw

Connie K. Duckworth
Partner
Eight Wings Enterprises

Russell M. Flaum
President, Signode Packaging Systems
Worldwide
Executive Vice President,
Illinois Tool Works

Christopher B. Galvin
Chairman and CEO
Motorola Inc.

Ilene S. Gordon
Senior Vice President,
Pechiney Group and
President, Plastic Packaging

Betsy D. Holden
Co-CEO, Kraft Foods Inc.,
and President and CEO,
Kraft Foods North America

Michele J. Hooper
Former President and CEO
Voyager Expanded Learning Inc.

Dipak C. Jain, PhD
Dean
Northwestern University
Kellogg School of Management

Richard L. Keyser
Chairman and CEO
W. W. Grainger, Inc.

Janardan D. Khandekar, MD†
Evanston Northwestern Healthcare

Lester B. Knight, III
Founding Partner
RoundTable Healthcare Partners

Harry M. Jansen Kraemer, Jr.
Chairman and CEO
Baxter International Inc.

Daniel C. Kriser
Principal
Cedar Hill Associates

David Kuo, MD†
Evanston Northwestern Healthcare

Lewis Landsberg, MD†
Vice President for Medical
Affairs and Dean
Feinberg School of Medicine

Miles L. Marsh
Former Chairman and CEO
Fort James Corporation

Marilyn McCoy
Vice President of Administration and
Planning
Northwestern University

Timothy J. McDonough, MD†
Evanston Northwestern Healthcare

Alan G. McNally
Chairman
Harris Bank and
Bankmont Financial

Samuel M. Mencoff
Managing Director
Madison Dearborn Partners LLC

Hardy Ray Murphy, PhD
Superintendent
Evanston/Skokie School District 65

Mark R. Neaman†
President and CEO
Evanston Northwestern Healthcare

Ellen O'Connor
Civic Volunteer

Jerry K. Pearlman
Retired Chairman
Zenith Electronics Corporation

John Rau
President and CEO
Miami Corporation

M. Jude Reyes
Founder
Reyes Holdings LLC.

William J. Robb, III, MD†
Evanston Northwestern Healthcare

Honey Jacobs Skinner
Partner
Sidley Austin Brown & Wood

Neele E. Stearns, Jr.
Chairman
Financial Investments Corporation

Mark Stevens
President, Personal
Financial Services
Northern Trust Bank

John W. Taylor, III
Retired

Carl D. Thoma
Managing Director
Thoma Cressey Equity Partners

J. Mikesell Thomas
Former Managing Director
Lazard Frères & Co. LLC

Dana Turban†
President
The Auxiliary of Evanston
Northwestern Healthcare

John R. Walter
Retired President and COO, AT&T
Former Chairman, President and CEO,
R.R. Donnelley & Sons

Jonathan P. Ward
Chairman and CEO
ServiceMaster Company

William J. White
Retired Chairman, Bell & Howell and
Professor, Northwestern University

David P. Winchester, MD†
Evanston Northwestern Healthcare

William Wrigley, Jr.
President and CEO
Wm. Wrigley Jr. Company

LIFE DIRECTORS

Evanston Northwestern
Healthcare

Carlyle E. Anderson
Marshall Bennett
Arnold M. Berlin
Kenneth L. Block
Wiley N. Caldwell
Douglas K. Chapman
Donald C. Clark
Harry H. Coon
John W. Croghan
Richard J. Ferris
James L. Garard, Jr.
William B. Graham
John D. Gray
Lawrence Howe
Richard A. Lenon
Joseph Levy, Jr.
John M. Richman
Daniel C. Searle
Howard L. Storch
Daniel R. Toll
Raymond C. Tower
William S. Turner
Charles R. Walgreen, Jr.

Highland Park Hospital

Harold E. Foreman, Jr.
James R. Foster
Donald P. Horwitz
Gregg A. Hunter
Roger D. Isaacs
Steven Lazarus
Frank M. Lieber
Robert I. Logan
Donald G. Lubin
Alice S. Pfaelzer
Ellard Pfaelzer, Jr.
Thomas H. Quinn
Judy Rehn
Harrison I. Steans
Robert N. Thurston
Edward S. Weil, Jr.
Carlyle S. Weil
Thomas E. Wood

† Ex-officio

OFFICERS

Corporate

Homer J. Livingston, Jr.
Chairman

William Wrigley, Jr.
Secretary

Mark R. Neaman
President and
Chief Executive Officer

Jeffrey H. Hillebrand
Chief Operating Officer

Thomas H. Hodges
Executive Vice President,
Finance and Treasurer

Senior Management Staff

David C. Loveland
Corporate Relations

William R. Luehrs
Human Resources

Nancy Semerdjian, RN
Medical Informatics

Ronald G. Spaeth
Development

Hospitals and Clinics

EVANSTON HOSPITAL
Raymond Grady
President

Jesse Hall
Peggy King, RN
David R. Olejniczak
Veronica Zaman, RN

GLENBROOK HOSPITAL
Douglas M. Silverstein
President

J.P. Gallagher
Kathy Snow, RN

HIGHLAND PARK HOSPITAL
Mary S. O'Brien
President

Jim Renneker, RN

ENH Medical Group

Joseph Golbus, MD
Marsha Miller
Kristen Murtos
Gary Weiss

ENH Research Institute

Leopold Selker, PhD

Professional Staff

Timothy McDonough, MD
President

David Kuo, MD
President-Elect

William J. Robb III, MD
Chairman, Executive Committee of the
Professional Staff

The Auxiliary of Evanston Northwestern Healthcare

Dana Turban
President

Jeanne Johnson
President-Elect

Mary Hoppe
Vice President, Funding Development

Carol Pollock
Vice President, Membership

Sandy Miller
Vice President, Volunteers

Susan del Castillo
Recording Secretary

Claudine Gerbel
Treasurer

Kathleen Leighton
Treasurer-Elect

The Auxiliary of Highland Park Hospital

Bonnie Haber
President

Patti Nahin
Vice President

Joanna Brofman
Recording Secretary

Margie Barron
Corresponding Secretary

Betty Chacharon
Treasurer

CLINICAL CHAIRMEN

William D. Bloomer, MD
Chairman of Radiation Medicine
Anna Hamann, MD, Chair
of Radiation Medicine

Michael S. Caplan, MD
Chairman of Pediatrics
The Auxiliary of Evanston
Northwestern Healthcare
Chair of Pediatrics

Robert R. Edelman, MD
Chairman of Radiology
William B. and Catherine Graham
Chair of Radiology

Janardan D. Khandekar, MD
Chairman of Medicine
Louise W. Coon
Chair of Medicine

Martin S. Lipsky, MD
Chairman of Family Medicine

Frederick E. Miller, MD, PhD
Chairman of Psychiatry

Clayton A. Peimer, MD
Chairman of Orthopaedic Surgery

Richard K. Silver, MD
Chairman of Obstetrics
and Gynecology
The Auxiliary of Evanston
Northwestern Healthcare
Chair of Obstetrics/Gynecology

Jeffery S. Vender, MD
Chairman of Anesthesiology

Nicholas A. Vick, MD
Chairman of Neurology
Ruth Cain Ruggles
Chair of Neurology

Thomas A. Victor, MD, PhD
Chairman of Pathology
and Laboratory Medicine

David P. Winchester, MD
Chairman of Surgery
Stanton and Margaret Rogers
Palmer Chair of Surgery

ADDITIONAL ENDOWED CHAIRS

Allstate Foundation
Judson B. Branch
Chair of Cardiology
Timothy A. Sanborn, MD

Arlene and Marshall Bennett
and **Joseph A. Tarkington, MD**,
Chair of Neurosurgery
Ivan S. Ciric, MD

Louis W. Biegler Chair of Surgery
Joseph A. Caprini, MD

Owen L. Coon Chair of
Cardiothoracic Surgery
Todd K. Rosengart, MD

Duckworth Family Chair
of Breast Cancer Research
Vimla Band, PhD

Rafael M. Garces, MD,
Chair of Nuclear Medicine
Reid M. Perlman, MD

Stanley C. Golder Chair
of Neuroscience Research
Dennis R. Groothuis, MD

Kellogg-Scanlon Chair of Oncology
Gershon Y. Locker, MD

E. Stephen Kurtides, MD,
Chair of Medical Education
Gregory W. Rutecki, MD

Jean Ruggles Romoser
Chair of Cancer Research
Hamid Band, MD, PhD

Chester D. Tripp Chair of Medicine

Mr. and Mrs. Charles R. Walgreen, Jr.
Chair of Cardiology
Ted E. Feldman, MD



EVANSTON
NORTHWESTERN
HEALTHCARE

2650 Ridge Avenue
Evanston, Illinois 60201

www.enh.org

Evanston Hospital
Glenbrook Hospital
Highland Park Hospital
ENH Medical Group
ENH Home Services
ENH Research Institute

Affiliated with Northwestern
University's Feinberg School
of Medicine

A publication of the
Office of Public Relations

Joan Trezek
*Assistant Vice President
Public Relations*

Gail Polzin
*Senior Director
Corporate Communications*

Principal Photography
Eric Hausman

NON-PROFIT
U.S. POSTAGE
PAID
PERMIT NUMBER 105
PALATINE P&DC, IL