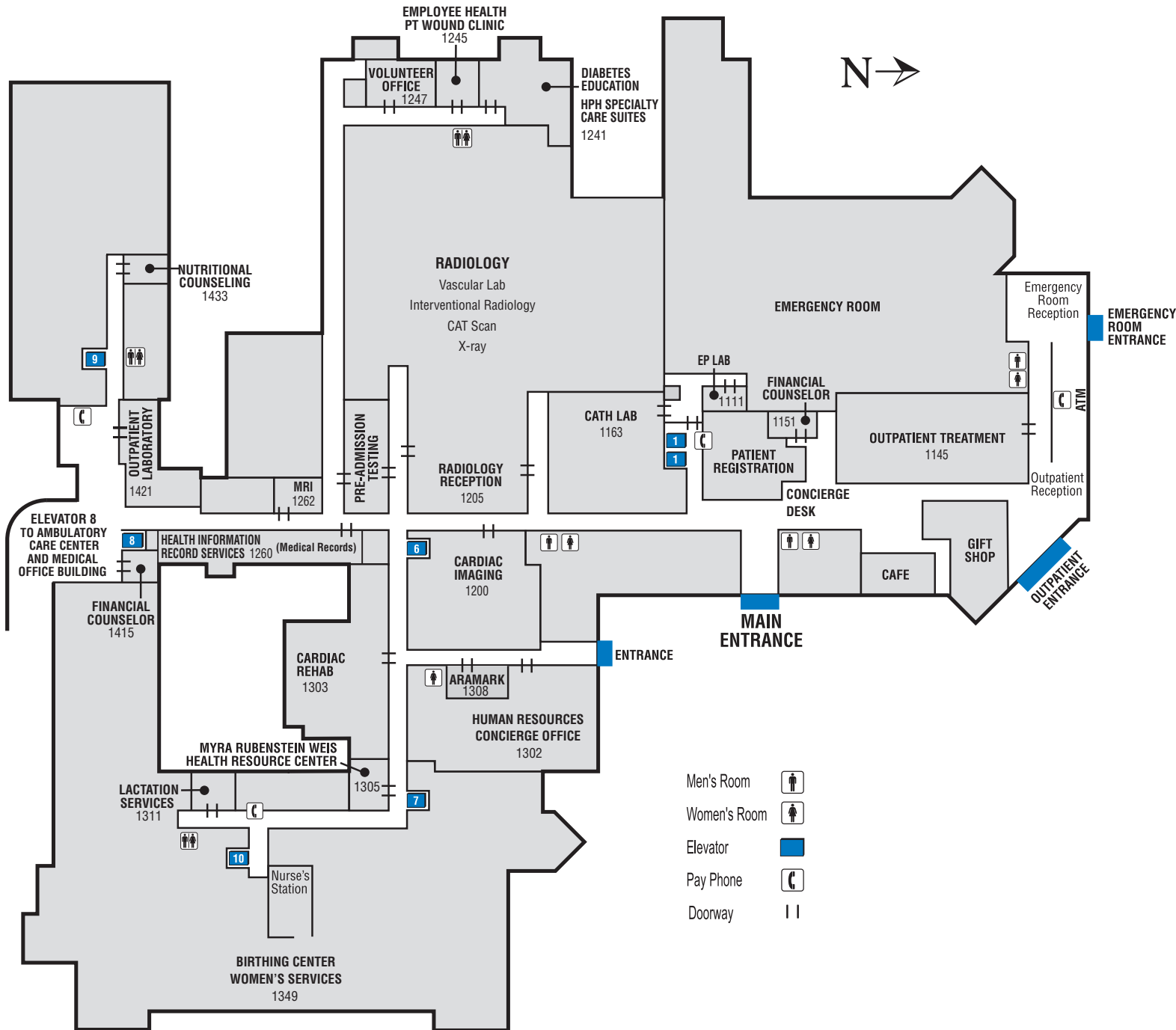


Highland Park Hospital

777 Park Avenue West
Highland Park, IL 60035
(847) 432-8000



We are committed to providing a healthy environment. All NorthShore University HealthSystem properties are smoke-free.

If you have any questions,
please call Concierge Services
Internal: Dial 4-YOU (4968)
External: Dial (224) 364-4-YOU
or (224) 364-4968

- Men's Room 
- Women's Room 
- Elevator 
- Pay Phone 
- Doorway 

First Floor

| Elevator | Floor | |
|----------|-------|---|
| 1 | B | AV Lecture Hall |
| | B | Cafeteria |
| | B | Meeting Rooms 1, 2 |
| | 2 | ICU |
| 2 | 2 | North Patient Rooms |
| | 3 | North Patient Rooms |
| | 4 | North Patient Rooms |
| 6 | LL | EMT - B309 |
| | LL | Simulation Lab - B302 |
| | 2 | Ambulatory Surgery |
| 2 | 2 | Surgery |
| | 3 | Chapman 3322 |
| 8 | B | Ambulatory Care Center |
| | B | Medical Office Building |
| | 2 | South Patient Rooms |
| 3 | 3 | Dialysis |
| | 2 | Patient Rooms |
| 9 | 3 | EDU |
| | LL | Meeting Rooms 3, 4 |
| ML | ML | EEG - 326 |
| | ML | EMG - 326 |
| ML | ML | Outpatient Physical and Occupational Therapy - B400 |
| | ML | GI Lab |

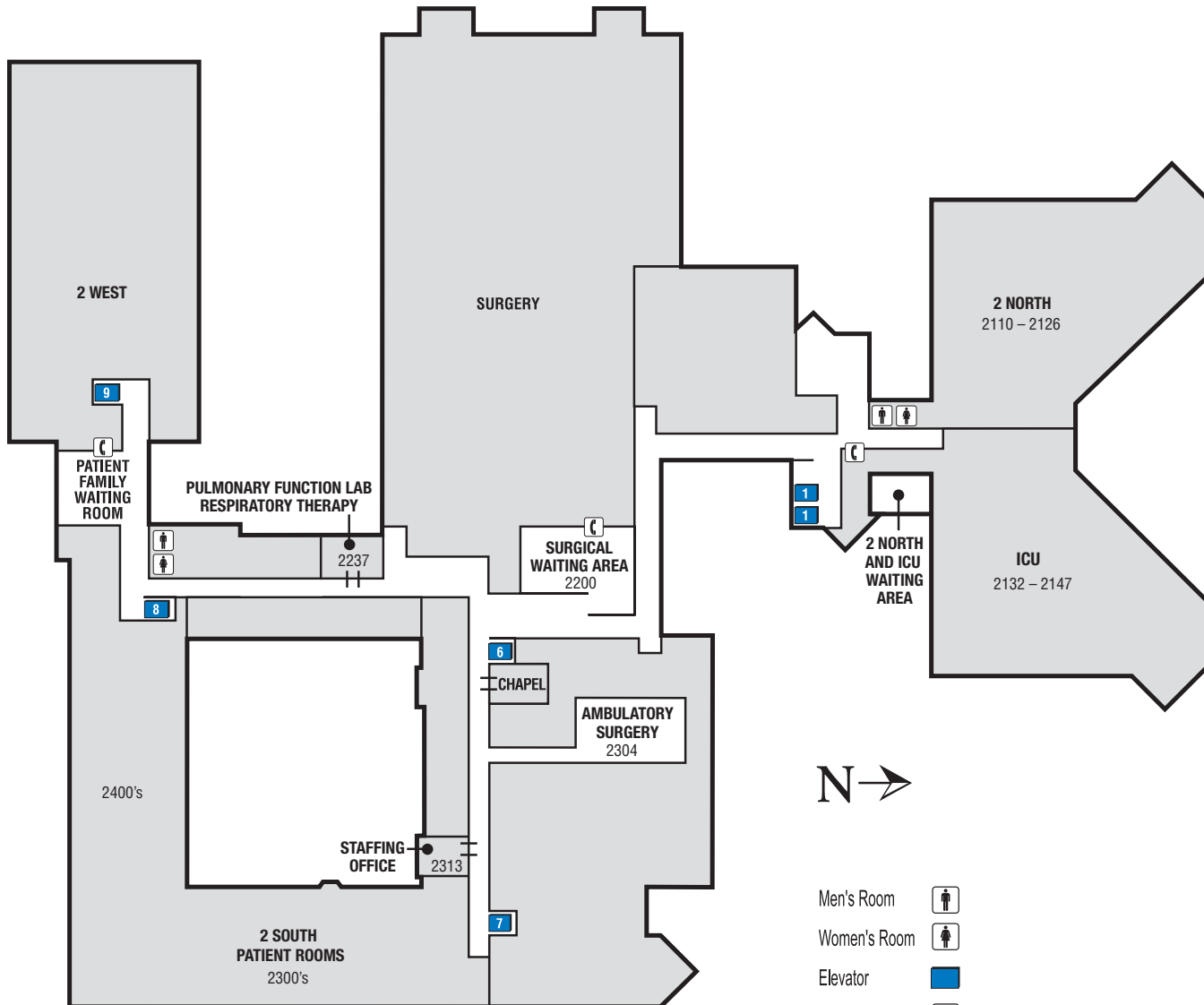
Highland Park Hospital

777 Park Avenue West
Highland Park, IL 60035
(847) 432-8000



We are committed to providing a healthy environment. All NorthShore University HealthSystem properties are smoke-free.

If you have any questions, please call Concierge Services
Internal: Dial 4-YOU (4968)
External: Dial (224) 364-4-YOU or (224) 364-4968



- Men's Room 
- Women's Room 
- Elevator 
- Pay Phone 
- Doorway 

| Elevator | Floor | |
|----------|-------|---|
| 1 | B | AV Lecture Hall |
| | B | Cafeteria |
| | B | Meeting Rooms 1, 2 |
| | 2 | ICU |
| 2 | 2 | North Patient Rooms |
| | 3 | North Patient Rooms |
| 4 | 4 | North Patient Rooms |
| | 4 | North Patient Rooms |
| 6 | LL | EMT - B309 |
| | LL | Simulation Lab - B302 |
| | 2 | Ambulatory Surgery |
| | 2 | Surgery |
| 7 | 3 | Chapman 3322 |
| | 3 | Chapman 3322 |
| 8 | B | Ambulatory Care Center |
| | B | Medical Office Building |
| | 2 | South Patient Rooms |
| 3 | 3 | Dialysis |
| | 3 | Dialysis |
| 9 | 2 | Patient Rooms |
| | 3 | EDU |
| | 3 | EDU |
| 10 | LL | Meeting Rooms 3, 4 |
| | ML | EEG - 326 |
| | ML | EMG - 326 |
| | ML | Outpatient Physical and Occupational Therapy - B400 |
| | ML | GI Lab |

Second Floor