



Community Investment Fund (CIF)

Information Session

July 2022

Healthcare for what's **>** next.

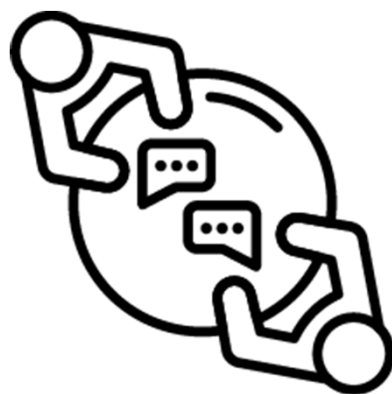


CIF | Our Purpose



Community-
Connected
Care

=



Listen & Learn

+



Get Involved

CIF Journey | 2022



Lake
County
Cook
County

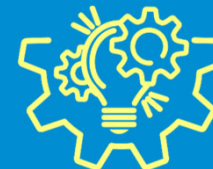
\$2.6M
Investment



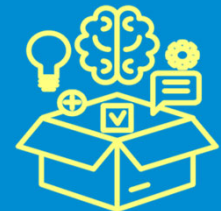
7
Partners



Talent



Capabilities



Resources

CIF Journey | 2022 Grant Partner Highlight

Highwood Library & Community Center



Grant: \$578,000

Program:

Provide bilingual preventative health and mental health education, case management and counseling to underserved families in Lake County



CIF Journey | 2023



Lake
County
Cook
County

Up to
\$4.0M
Investment



Purpose:

- Enhance health and wellbeing
- Advance health equity
- Support local economic growth

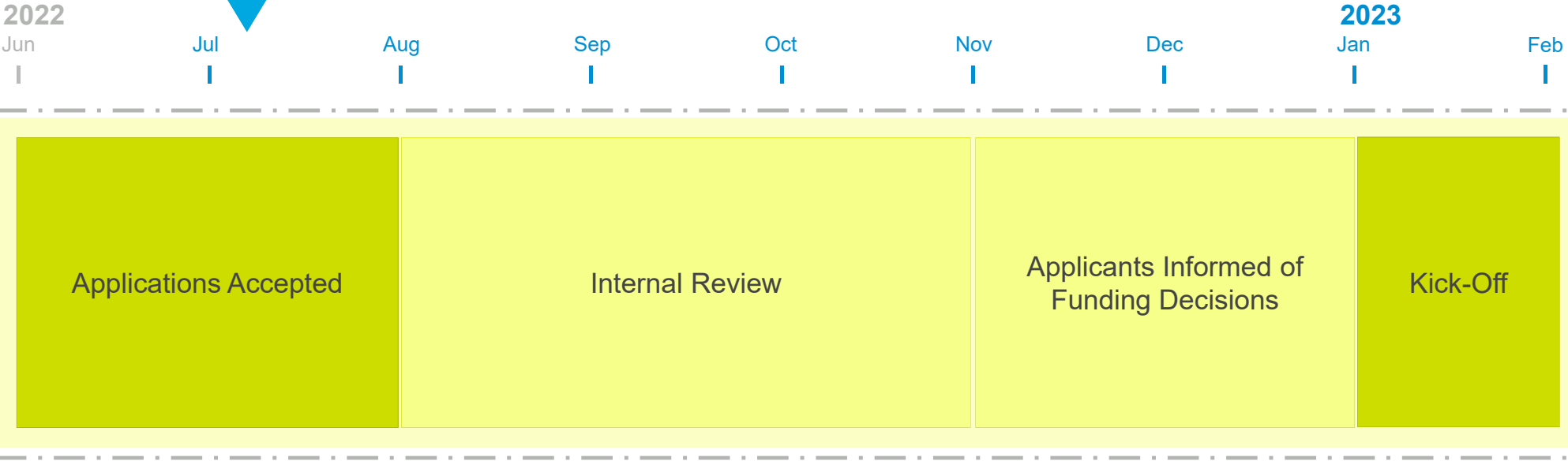
Aligned with Community Needs:

- Access to & coordination of health care
- Behavioral health care
- Prevention & management of chronic disease & conditions

Geographic Focus



Application Process



Partnership Experience



Direct Partnership



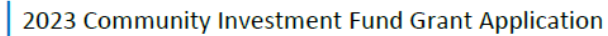
**Coming Together as
a Cohort**



**Sharing Our
Stories**



Demonstrate Impact




If you have any questions on the application, please contact us at community@northshore.org.

Please tell us about the organization(s) applying for the grant.


Organization Name:	
Address:	
Website:	
Mission:	
Leadership:	
Please share information on your leadership team and key team members that highlights their experience with programs similar in type or complexity to the proposed program/project in this application. You may choose to add this information below or attach an additional document to the end of this application. Please limit your leadership submission to 500 Words.	

- Organization(s)
- Program/Project:
 - Program overview
 - Community need addressed
 - Population served
 - Intended impact
 - Metrics
- Funding request
 - Duration
 - Amount
 - Sustainability
- Partnership

Thank you for Joining Us!



[FIND A DOCTOR](#) [LOCATIONS](#) [OUR SERVICES](#) [IMMEDIATE CARE](#) [PATIENTS & VISITORS](#) [Request Appointment](#)

 We welcome visitors to our care settings while they're wearing masks. View our updated [visitor guidelines](#).


Community

Community Investment Fund

[Community Impact](#)
[Community Checkup](#)
[Partner Stories](#)
[NorthShore's Simbulance](#)
[Community Advisory Committees](#)
[Community Health Needs Assessment](#)
[Implementation Strategy Plan](#)
[Community Leader Newsletter](#)
[Volunteer](#)
[Donating Blood](#)
[Classes and Events](#)

Home » Community » Community Investment Fund

Community Investment Fund




NorthShore University HealthSystem, including Swedish Hospital and Northwest Community Healthcare (NCH), have awarded \$2.6 million to be distributed to seven organizations across Lake and Cook Counties through its Community Investment Fund. As a prominent feature of their merger, NorthShore and Edward-Elmhurst Health each committed \$100 million to their respective communities, for a combined total of \$200 million. These funds will generate millions of dollars annually to enhance health and wellbeing, advance health equity and support local economic growth. Edward-Elmhurst Health expects to solicit proposals and announce awardees in the coming months.

[Press Release: NorthShore University HealthSystem Announces First Community Investment Fund Partners](#)

Inaugural Awardees

NorthShore's partner organizations are all working to address priority areas of need including mental health services for the underserved, help for victims of domestic violence, economic and career development, support for those with food insecurity and mobile services outreach.



We are now accepting applications for our second round of Community Investment Fund partnerships. Applications are **due by Sunday, July 31st** and fund recipients will be announced in January 2023.

Apply Now

Please review the materials below for more information on the CIF program and expectations for grant recipients:

- Purpose, Guidelines & Criteria ([link](#))
- Application ([link](#))

Please join us for our upcoming information sessions on:

- June XX, 2022 ([link coming](#))
- July XX, 2022 ([link coming](#))

For questions, please:

- View frequently asked questions ([link](#))
- Contact us at XXX@nrthshore.org

Apply:

- Application and guidelines: northshore.org/cif
- Email application to community@northshore.org
- **Due July 31st**

Questions

- FAQs posted: northshore.org/cif
- Email us: community@northshore.org

Additional Information

Eligibility, Guidelines & Community Needs

Eligibility

- 501(c)(3)
- BIPOC organization
- Minority Business Enterprise (MBE)
- Women-owned Business Enterprise
- Tribal organization

Guidelines

- Supports sustainable programs that create meaningful impact within the community
- Includes new & existing programs
- Multiyear awards evaluated on a case-by-case basis

Community Needs

- Access to & coordination of health care
- Behavioral health care
- Prevention & management of chronic disease & conditions

Funding Amounts & Duration

Funding Amounts

- Requested funds should align with the measurable goals of the programing
- 2022 funding awards ranged from: \$116,000 - \$682,000

Duration

- Multiyear awards evaluated on a case-by-case basis
- Open to funding up to three years w/ annual review

Addressing Community Needs

Community Health Needs Assessment

Upstream ↓	Level \ Area	Access to Health Care Services	Mental Health Services	Chronic Disease Management & Prevention
	Direct	<i>Example: Fund FQHC</i>		
	Address Social & Economic Determinants of Health	<i>Example: Fund mobile access</i>		
	Address Root Causes	<i>Example: Support creation of local jobs that provide thriving wage and health insurance</i>		