

Transforming Care for Cancer Patients

2019 ANNUAL REPORT HIGHLIGHTS

Our 2019 Annual Report showcases highlights of our clinical and research efforts.

To learn more about our full range of programs and services, please visit northshore.org/kellogg



Dr. Bruce Brockstein



Dr. David J. Winchester

At NorthShore University HealthSystem (NorthShore) Kellogg Cancer Center, we are dedicated to improving patient outcomes. We come together in teams of specially trained physicians, nurses and other healthcare professionals using the most advanced technology and sophisticated personalized medicine to provide the best possible care to individual patients.

From the rapidly evolving world of immunotherapy—which we are prioritizing with a comprehensive new program—to our nationally recognized molecular pathology and diagnostics laboratory, to a wide array of clinical trials and sophisticated surgical techniques, our patients have access to the latest and most effective therapies.

We are also committed to providing a full range of supportive services, like our unique tobacco cessation program and newly available cooling caps to reduce hair loss for patients undergoing chemotherapy.

Our patients also benefit from our academic affiliation with the University of Chicago Pritzker School of Medicine. In addition to our shared medical training programs, patients benefit from our shared clinical and research programs and our combined expertise.

NorthShore is certified by the American Society of Clinical Oncology (ASCO) Quality Oncology Practice Initiative (QOPI) as a premier medical provider for practicing the highest standards of quality cancer care. NorthShore is recognized in *U.S. News & World Report's* Best Hospitals Survey as the #3 Hospital in Chicagoland and the state of Illinois.

We are grateful to our philanthropic supporters and honored by the trust of patients who come to us for care. The highlights described in this report reflect our collective commitment to innovation and outstanding care.

Bruce Brockstein, MD

Medical Director, NorthShore Kellogg Cancer Center,
Head, Division of Hematology/Oncology,
Kellogg-Scanlon Chair of Oncology

David J. Winchester, MD

Chairman, NorthShore Cancer Committee,
Associate Director for Surgical Specialties,
NorthShore Kellogg Cancer Center Board of Directors,
David P. Winchester, MD, Chair of Surgical Oncology



Progress in Lung Cancer Care

Innovative Research

NorthShore was one of 18 institutions participating in an important multicenter trial for metastatic non-small cell lung cancer patients. The study aims to determine the best sequencing of chemotherapy and immunotherapy for optimal outcomes. One hundred patients took part in the randomized trial led nationally by NorthShore principal investigator oncologist Thomas Hensing, MD, MS, who presented results at the American Society of Clinical Oncology (ASCO) international conference. Patient outcomes are still being monitored, although initial data revealed that a specific subgroup of patients may benefit the most from chemotherapy first, followed by immunotherapy, said Dr. Hensing, who hopes to continue to build on this study with further research.

Screening Saves Lives

Another large, randomized trial—the Nelson Study—confirmed that appropriately deployed lung cancer screening saves lives. Presented at the International Association for the Study of Lung Cancer (IASLC) World Conference on Lung Cancer, the Nelson Study showed that annual lung cancer screening with low-dose computed tomography (CT) in high-risk patients reduced lung cancer deaths by 26% in men and up to 61% in women. Kellogg Cancer Center was an early adopter and promoter of CT lung screening for smokers and former smokers at higher risk of developing lung cancer.

According to the American Cancer Society prediction of 160,000 lung cancer deaths in the United States, screening could save up to 65,000 American lives each year. Lung cancer kills more people annually than breast, colon and prostate cancers combined.



Dr. Thomas Hensing

“We know that lung cancer screening can be effective in high-risk individuals, and we’re working with our colleagues in primary care and across the system to build an evidence-based screening program to best serve our patients,” said Dr. Hensing.

Increased Survival Rates

One of NorthShore’s key strengths in caring for lung cancer patients is our advanced molecular testing. The ability to do this testing on-site with rapid turnaround is critical to developing personalized treatment plans that offer patients the best care options as quickly as possible. Kellogg Cancer Center team has been a leader in using tumor biology to personalize care and will continue to expand these efforts, which have helped improve survival rates and quality of life.

For more information, visit northshore.org/cancer or call (847) 570-2112



Shannon Hartman, PharmD

Tobacco Cessation Efforts

NorthShore now has three certified Tobacco Treatment Specialists, all of whom completed training at the Mayo Clinic and work tirelessly to help patients quit smoking. Amy Call, PA-C, of the Division of Thoracic Surgery, and JoAnn Eriksson, RN, MS, APN, have joined oncology pharmacist Shannon Hartman, PharmD, who initiated the tobacco cessation program at NorthShore close to 10 years ago, to expand the reach of the program.

“Quitting smoking is different for every person, and we can’t compare one smoker to the next. We learn about each patient in one-on-one sessions and develop personally tailored programs to help them quit,” said Hartman. “Our program is unique and not based on group sessions.” Individual behavior plans to break habits and address triggers are combined with nicotine replacement products and other medications.

Research has shown that these efforts can significantly increase quit rates, and there is strong evidence that continued tobacco use after a cancer diagnosis decreases survival, reduces treatment efficacy, increases/prolongs treatment toxicity and increases the risk of recurrence.

The program is open to all Kellogg Cancer Center patients currently using tobacco, and the team will continue to expand its efforts. Patients can be seen through Kellogg Cancer Center at NorthShore Evanston, Glenbrook and Highland Park Hospitals.

Lifesaving Collaborative Care

Four years ago, Aislinn Bujewski had a small lump removed from her thigh. A healthy, active 46-year-old mother of three, Bujewski assumed it was a cyst and barely gave it a second thought. When pathology results revealed that it was actually metastatic melanoma, Bujewski was in total shock. “It was one of those surreal moments when it felt like time stopped,” she said.

A client/friend of Bujewski’s connected her to NorthShore oncologist and Kellogg-Scanlon Chair of Oncology Bruce Brockstein, MD, a specialist with expertise in melanoma, who quickly worked to develop a treatment plan. A PET scan revealed the cancer had already spread to her liver and lymph nodes.

“I told Dr. Brockstein, ‘Just come up with a game plan.’ I’m very stubborn, and I refused to let this win,” said Bujewski, who is a professional horse trainer and avid runner.

Dr. Brockstein started her on an advanced immunotherapy treatment—nivolumab infusions she received every other week for 18 months. “The timing of this was kind of a miracle,” said Dr. Brockstein. “Even five years ago, before we had this immunotherapy, she would have likely died in four to six months.”

“As scared as I was after the initial diagnosis, within five minutes of meeting Dr. Brockstein, I was thinking ‘This is going to be OK.’ He was going to be in charge of it, and I felt very calm,” said Bujewski. “And the whole team at Kellogg Cancer Center was great. As much as I dreaded the process, everyone from the nurses and techs to the receptionists all made it so much easier.”

Although the cancer disappeared from the lymph nodes, the large tumor in the liver remained unchanged in size. Following multidisciplinary consultation, her care team decided that in addition to the immunotherapy, Bujewski should have a major liver resection with Stanton and Margaret Rogers Palmer Chair of Surgery Mark S. Talamonti, MD, who removed the entire right lobe of her liver in an advanced, minimally-invasive procedure.

“This was a remarkable case. We told her we were working with evolving technology, and she had the confidence to go forward,” recalled Dr. Talamonti. “She was in such great shape, and there was no evidence of cancer on the healthy section of her liver. She met the highly selective criteria for this pioneering approach.” Most, but not the entire removed liver tumor was dead tissue from the immunotherapy.



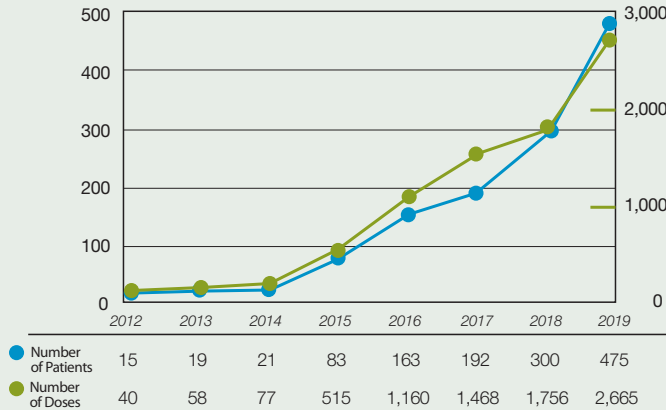
Dr. Bruce Brockstein and melanoma survivor Aislinn Bujewski at the Miles for Melanoma 5K Run/Walk in Chicago.

Bujewski has now been cancer-free for close to four years, and her prognosis is very good, according to Dr. Brockstein.

“I’ve been very lucky. I never stopped working, and I never stopped working out. I was grateful to keep up my running regimen,” said Bujewski, who completed her first marathon in 2018 and has two more on the calendar in 2019.

“This kind of treatment obviously changes your life, but it taught me a lot. It made me realize you’re as strong as you need to be,” she added. “If I hadn’t come to NorthShore for treatment, I’m not sure I’d still be here and able to watch my kids grow up.”

Immunotherapy— Total Number of Patients and Doses



Advancing Immunotherapy

While different combinations of surgery, radiation, hormonal therapy and chemotherapy have been successful in treating various cancers, physician-scientists continue to seek more effective and less toxic treatments for patients.

Immunotherapy now plays a growing role in the fight against cancer, and Kellogg Cancer Center has been at the forefront of this movement.

Immune checkpoint inhibitors are currently the most widely used and successful type of immunotherapy. These drugs “release the brakes” that keep T cells of the immune system from killing cancer cells. Rather than targeting the tumor directly, these drugs enable the patient’s own immune system to spot cancer cells and destroy them. Immune checkpoint inhibitor drugs have led to remarkably significant improvements in cancer outcomes with fewer side effects.

The first use of modern immunotherapy at Kellogg Cancer Center was for metastatic melanoma in 2011. Now as many as 50% of patients with metastatic melanoma, 25% of lung cancer and kidney cancer patients, as well as others, can expect long-term remission or cure with immunotherapy. Before immunotherapy, that number was closer to zero.

The number of cancers where immunotherapy has shown progress is growing

rapidly. Immune checkpoint inhibitors have now been shown to have a clear benefit for 13 different cancers, and that number will continue to grow with ongoing research.

At Kellogg Cancer Center, we have kept pace with national trends in both clinical use and research on these lifesaving drugs. In fiscal year 2018, a total of 300 patients received immunotherapy. In 2019, 475 are projected—and by 2020, more than 500 (or about 30%) of our medically treated cancer patients will receive immunotherapy.

We are now launching a formal, coordinated Immunotherapy Program at Kellogg Cancer Center to take this work to the next level in both clinical care and clinical and translational research. The dedicated program will build on many existing strengths, including exceptional clinical care and laboratory services.

While we participate in numerous clinical trials involving immunotherapy, the new program will expand our research efforts in clinical and translational research, ensuring that patients have access to the latest advancements. Already our Kellogg Cancer Center team has published several papers and 11 abstracts related to immunotherapy clinical and translational research. The new program will also expand existing partnerships with our collaborators at University of Chicago and other distinguished institutions.

Molecular Diagnostics Drive Personalized Medicine

NorthShore’s Pathology and Laboratory Medicine Department offers an impressive array of services, including our Molecular Diagnostics Laboratory, an early leader in genomic testing and analysis. We continue to provide next-generation sequencing to analyze tumors at a genetic level and can even analyze micro-needle aspiration samples, all with a rapid turnaround. Results from these high-level tests performed on-site with very rapid turnaround times routinely form the basis for selection of optimal personalized therapy for patients with lung cancer, melanoma, colon and other cancers.

Led by Linda Sabatini, PhD, the Molecular Diagnostics Laboratory is launching new next-generation panels for hematologic malignancies, offering these patients the most advanced DNA-based techniques to deliver personalized care. Clonality testing, launched in 2016, helps in the diagnosis of leukemias and lymphomas.

This year, we will expand our current 50-gene panel test to a 400-plus gene panel test that will include tumor mutational burden, information that can help guide immunotherapy treatment. The analysis of tissue from tumor metastases can identify biomarkers of aggressive behavior, and potential therapeutic targets, potential mechanisms of resistance to therapy. The analysis of circulating tumor DNA (shed into the patient’s bloodstream) can also aid in the identification of biomarkers of resistance and/or response to targeted therapies. The expanded capability will provide a broader view of the genetic alterations in a patient’s tumor.

The Molecular Diagnostics Laboratory is an integral component of NorthShore’s pharmacogenomics program. It is expanding efforts to work with cancer patients and alleviate the need for trial and error with medications for pain management and anxiety/depression.



Immediate Care by Cancer Specialists

Our new dedicated Kellogg Cancer Center Immediate Care helps patients avoid trips to the Emergency Department by providing expert care for those suffering acute and adverse symptoms related to their disease or treatment.

The Immediate Care Center at Glenbrook Hospital is staffed by oncology advanced practice nurses who assess patients with acute health issues, order appropriate diagnostic tests, and in conjunction with the patient’s physician, decide on a personalized treatment plan of care for less cost than a typical emergency visit. Hospitalization is avoided in 90% of these visits. Research shows that 63% of oncology patients who go to the Emergency Department end up hospitalized.

Patients are seen quickly in a safe environment by those with expertise in cancer care, rather than a potentially long wait in the Emergency Department that may add to the risk in the setting of a compromised immune system.

On-site radiology and laboratory services are available, and complimentary valet parking adds to the ease and convenience of these visits.

Beating the Odds

Doris Murillo was 52 years old and a self-described workaholic who never took a day off when she had a feeling that something was not right and asked her oldest son to take her to the hospital.

"I was so tired, my chest hurt, my back hurt and I couldn't stop coughing," said Murillo. It didn't take long to learn that she had lung cancer. "I smoked, my friends and family smoked, but still it was a shock. I didn't think it would happen that soon," she recalled.

Murillo was referred to Kellogg Cancer Center oncologist Thomas Hensing, MD, who has treated the now 57-year-old mother of four and grandmother of six with advanced immunotherapy, giving her a new lease on life and time to spend with her family.

"He explained everything in a very detailed way, and he didn't sugarcoat anything," said Murillo, who struggled with her initial chemotherapy and relapsed early in the course of

treatment. Dr. Hensing then put Murillo on an immunotherapy medication, which although not as commonly used for small cell lung cancer like hers, has been very successful in her case. "She's in remission now, and it's very gratifying to be able to offer her this treatment," said Dr. Hensing.

Murillo quit smoking after her diagnosis and hopes everyone in her family will follow. She is grateful for the care she received and for the compassionate caregivers, including Advanced Practice Nurse JoAnn Eriksson and all Kellogg Cancer Center nurses who have been part of her care team.

"Sometimes I get out of breath, but generally I feel OK, and I'm very happy that I'm still here. I thank God for every day, and I'm very thankful for Dr. Hensing. He's been an awesome doctor and a really good person," said Murillo. "I refuse to give up. I don't feel like it's my time yet."



Advanced Practice Nurse JoAnn Eriksson is a key member of Doris Murillo's care team.

Leader in Oncoplastics

Katherine Kopkash, MD, FACS, Director of Oncoplastic Breast Surgery at NorthShore, led a novel study looking at ergonomics for breast surgeons, and presented the results at the national meeting of the American Society of Breast Surgeons in May to an enthusiastic audience. The research will also be published in the *Annals of Surgical Oncology*.



Dr. Katherine Kopkash

Breast surgeons like Dr. Kopkash are doing more and more risk-reducing surgeries as awareness around genetic testing and high-risk patients continues to build. Nipple-sparing mastectomies, which are often favored by patients, are long and complicated procedures that can be physically taxing for surgeons, whose bodies are often contorted for hours.

Dr. Kopkash and three of her colleagues wore EMGs (electromyographs) during surgery to analyze muscle use and then participated in questionnaires after completing procedures. As a follow-up study, Dr. Kopkash used the initial data to develop an exercise program, working with a kinesiologist/

personal trainer to identify exercises to strengthen the muscles most used during surgery. She also developed an operating room protocol that included specific table positions to help ease muscle strain for surgeons. This study was unique in its consideration of the long-term health and work capacity of the surgeon, recognizing that maximizing the surgeon's comfort maximizes the patient's opportunity for optimal outcomes.

A national leader in the growing field, Dr. Kopkash sits on the Oncoplastics Committee for the American Society of Breast Surgeons and taught its quickly sold-out oncoplastics course hosted at NorthShore. She also held an oncoplastics lab for residents who were able to practice oncoplastic techniques on breast surgical simulators called Mastotrainers. This is the only oncoplastic resident training program in the country. The simulation training was featured in a video presentation at a recent American Society of Breast Surgeons meeting.

Crucial Clinical Trials

Patients at Kellogg Cancer Center have access to a broad array of clinical trials and potentially lifesaving new treatments. Research is a critical part of our commitment to providing the best possible care for patients today and driving improvements in treatment.

Surgical Oncology Division Head Katharine Yao, MD, is the site principal investigator of the Comparison of Operative to Monitoring and Endocrine Therapy (COMET) Study, a trial that is studying treatment options for low-risk ductal carcinoma in-situ (DCIS). NorthShore is one of 83 national sites participating in the study, which may prove groundbreaking in how DCIS cancer patients are treated.

The randomized trial assigns patients to one of two groups receiving either: (1) breast surgery with the option of radiation and/or endocrine therapy, and (2) active surveillance or close monitoring with the option of endocrine therapy. The study is sponsored by Alliance Foundation Trials.



For a complete list of active trials, visit:
northshore.org/Kellogg-cancer-center/clinical-trials

Kellogg Cancer Center Nurses Advance Supportive Care

Our specialized oncology nurses led the initiative to provide support for patients experiencing hair loss during chemotherapy.

One of many cancer patients' greatest fears is losing their hair. Kellogg Cancer Center now offers patients undergoing specific types of chemotherapy treatments the option of new scalp cooling caps to reduce hair loss. The cooling caps are not appropriate for all patients but offer a good option for those receiving certain chemotherapy drugs and who are very committed to minimizing hair loss.

The Paxman caps are worn for 30 minutes before treatment, through chemotherapy and up to an additional 90 minutes after the treatment. The cap reduces the temperature of the scalp, which reduces the blood flow to hair follicles to prevent or minimize hair loss. Kellogg Cancer Center nurse Bonnie Ryszka, RN, spearheaded the effort to bring the cooling cap program to NorthShore patients.



Kellogg Cancer Center staff nurses received national recognition by presenting at the Oncology Nursing Society (ONS) 44th Annual Congress in April on two important topics: "Simulation as a Unique Training Approach for Nursing Management of Oncologic Emergencies" and "Implementing a Cost-Free Dedicated Education Program for Outpatient Oncology Nurses." Laura Lenski, RN, was the main presenter, supported by Mary Ried, RN, and Bonnie Ryszka, RN.

Community Partners

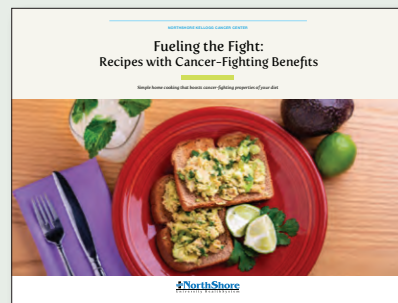
Kellogg Cancer Center has a number of key partnerships and collaborations.

- **Social workers, nutritionists and financial advocates are connected to internal collaborators and external organizations where we can refer patients for additional resources.**
- **Our outreach coordinator fosters key partnerships with the Cancer Wellness Center, Leukemia & Lymphoma Society, the American Cancer Society (ACS) and others.**
- **We host monthly Imerman Angels socials and partner with ACS for virtual programs and more.**

Fueling the Fight

Registered dietitians with specialized oncology expertise see patients at all three Kellogg Cancer Centers, as nutrition is an important part of the treatment and healing process. *Fueling the Fight: Recipes with Cancer-Fighting Benefits*, an online cookbook with some of our dietitians' favorite recipes, was released this year.

A well-balanced meal with cancer-fighting benefits, including phytochemicals, does not have to be difficult to create or boring to eat. Phytochemicals are protective compounds found in the pigments of plants that have been shown to stimulate the immune system, slow the growth rate of cancer cells and prevent DNA damage that can lead to cancer. A diet consisting of an abundance of plant foods—including a variety of vegetables, legumes, herbs, spices and fruits—is the first step to eating more phytochemicals.



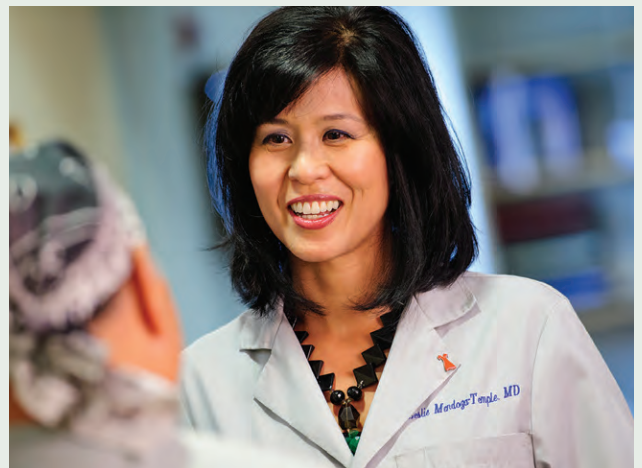
To download the free eBook, go to northshore.org/fuelingthefight

Cancer Center dietitians focus on prevention as well as helping cancer patients get stronger through treatment, and the online presence is one way to reach as many members of the community as possible.

Benefit Concert Supports Integrative Medicine

Close to 1,000 people attended a benefit concert for NorthShore's Integrative Medicine Program on a snowy January evening, raising funds to provide integrative medicine therapies including acupuncture, bodywork and integrative medicine physician consultations for Kellogg Cancer Center patients.

Sons of the Silent Age performed David Bowie's "Scary Monsters" and other Bowie hits at the Metro in Chicago. Actor Michael Shannon joined the band as Lou Reed.



Dr. Leslie Mendoza Temple is the Medical Director of the Integrative Medicine Program, which provides complementary therapies to a growing number of cancer patients.

Integrative medicine therapies have been shown to relieve pain and neuropathies, reduce fatigue and sleep issues, boost immunity, provide stress relief, improve appetite and improve quality of life for cancer patients undergoing chemotherapy and radiation.

NorthShore's Integrative Medicine Program celebrated its 20th year and continues to care for a significant number of oncology patients.

Outcomes Study: Mammogram Screenings for the Underserved

Cancer screening activities are vital work for quality cancer programs. They are designed to decrease the number of patients diagnosed with a specific cancer at a late stage and increase the likelihood of survival.

Breast cancer is the second leading cause of cancer-related death among women. Screening mammography is associated with a 30% to 40% reduction in breast cancer mortality among women ages 40 to 74. Early detection through screening is key to improved survival. The overall prognosis is directly linked to the stage of the disease at diagnosis, and timely screening detects breast cancer at earlier stages when the disease is more treatable and even curable.

To address screening needs and access to screening for the underserved, NorthShore partnered with the Lake County Health Department (LCHD) and Community Health Center, located in Waukegan, and offered 200 complimentary mammograms. The screenings were funded by the Myra Rubenstein Weis (MRW) Leadership Board of NorthShore.

Lake County towns—particularly Highwood, North Chicago, Round Lake, Waukegan and Zion—were identified by NorthShore’s Community Health Needs Assessment as geographic areas of greatest need. Also noted was a higher incidence of breast cancer in Lake County (136.5 per 100,000 compared to 127.4 per 100,000 in Illinois and 122.7 per 100,000 in the United States).

Carol Rosenberg, MD, Director of Preventive Health Initiatives at NorthShore, Director of the MRW LIFE Cancer Survivorship Program, and a member of the cancer committee, is studying the results of complimentary screenings offered to those in the community who are cared for by the Lake County North Shore Health Center in Highland Park.

“Importantly—although about half of those screened were found to have a normal mammogram and were advised to receive normal interval follow-up—a significant number of women were also found to have abnormalities, which were scrutinized intensively by our trained radiologists and deemed benign. These patients were also advised to receive normal interval follow-up,” said Dr. Rosenberg.

A small number of patients had diagnostic findings, which were indeterminate or suspicious for malignancy and given appropriate follow-up recommendations (see chart to the right). Additional significance of the data implies that mammography itself is only one aspect of screening underserved populations. “Imaging in conjunction with follow-up comparisons, additional imaging and feedback to patients and their primary care physicians is the type of complete, multistep quality process with lifesaving value that we were able to provide with this project,” she added.

LCHD Breast Imaging Categories

	Total LCHD Patients
No Show/Canceled Appointment	37
Scheduled/Awaiting Results	0
(0) Incomplete Additional Imaging or Priors Needed <i>(all contacted)</i>	18
(1) Normal (normal interval follow-up)	98
(2) Benign (normal interval follow-up)	45
(3) Probably Benign (short-term follow-up)	4
(4) Suspicious/Recommending Biopsy	1
(5) Highly Suggestive Malignancy	0
TOTAL	166



Lake County Health Department Executive Director Mark Pfister (from left) with NorthShore’s Chief of Breast Imaging Dr. Georgia Spear and Founding Director of the MRW LIFE Cancer Survivorship Program Dr. Carol Rosenberg celebrate the MRW Leadership Board of NorthShore’s support of mammograms for underserved women in Lake County.

Support Kellogg Cancer Center

For nearly 40 years, Kellogg Cancer Center’s dedicated team of outstanding physicians, nurses and other care providers has actively pursued the most effective and cutting-edge treatments available. These treatments are provided with compassion in an environment that promotes best practices through advanced research, clinical trials, personalized medicine and many years of collective experience. Kellogg Cancer Center has a truly patient-centered approach at its core and a team that delivers on that promise.

Philanthropy established Kellogg Cancer Center and continues to play an integral role in its success. The pace of change and advances in science and technology are ever-present. Having access to critical resources is paramount to a thriving center of medical excellence. When you donate to Kellogg Cancer Center,

you help ensure that everyone receives the best care possible with personalized care plans tailored specifically for the individual. As a result, you help save and improve the lives of thousands of patients annually—family, friends and your neighbors. Your impact is enormous.

More people are beating cancer than ever before thanks to new discoveries, advances in genomics and other diagnostic testing, personalized targeted therapies, and immunotherapy. There are more options delivering better outcomes and brighter futures.

To learn more about how you can support Kellogg Cancer Center, please call (224) 364-7200 or visit foundation.northshore.org.

Active Clinical Trials

NorthShore patients have access to a broad array of clinical trials and potentially lifesaving new treatments.

For a complete list of active trials, visit northshore.org/kellogg-cancer-center/clinical-trials.

Brain Tumors

A071101 Phase II randomized trial comparing the efficacy of heat shock protein-peptide complex-96 (HSPPC-96) (NSC #725085, Alliance IND #15380) vaccine given with bevacizumab versus bevacizumab alone in the treatment of surgically resectable recurrent glioblastoma multiforme (GBM)

A221101 Phase III randomized, double-blind, placebo-controlled study of armodafinil (Nuvigil) to reduce cancer-related fatigue in patients with glioblastoma multiforme

Tocagen/Tg 511-15-01 A Phase II/III randomized, open-label study of Toca 511, a retroviral replicating vector, combined with Toca FC versus standard of care in subjects undergoing planned resection for recurrent glioblastoma or anaplastic astrocytoma

ICT 107 STING (Study of Immunotherapy in Newly Diagnosed Glioblastoma): A Phase III randomized, double-blind, controlled study of ICT 107 with maintenance temozolomide (TMZ) in newly diagnosed glioblastoma following resection and concomitant TMZ chemoradiotherapy

A071102 A Phase II/III randomized trial of veliparib or placebo in combination with adjuvant temozolomide in newly diagnosed glioblastoma with MGMT promoter hypermethylation

AbbVie/M13-813 A randomized, placebo-controlled Phase IIb/III study of ABT-414 with concurrent chemoradiation and adjuvant temozolomide in subjects with newly diagnosed glioblastoma multiforme (GBM) with epidermal growth factor receptor (EGFR) amplification (Intelligence 1)

CDX110-05 Expanded access (compassionate use) treatment protocol, rindopepimut (CDX-110)

AbbVie Preapproval Access Preapproval access of ABT-414 for treatment of glioblastoma multiforme (GBM)

Breast Cancer

EA221405 Pregnancy outcome and safety of interrupting therapy for women with endocrine responsive breast cancer (POSITIVE)

EA1131 Randomized Phase III postoperative trial of platinum-based chemotherapy versus observation in patients with residual triple-negative basal-like breast cancer following neoadjuvant chemotherapy

NSABP B-51 A randomized Phase III clinical trial evaluating post-mastectomy chest wall and regional nodal XRT and post-lumpectomy regional nodal XRT in patients with positive axillary nodes before neoadjuvant chemotherapy who convert to pathology negative axillary nodes after neoadjuvant chemotherapy

A0011401 Randomized Phase III Trial Evaluating the Role of Weight Loss in Adjuvant Treatment of Overweight and Obese Women with Early Breast Cancer

A0011502 A randomized Phase III double-blind placebo-controlled trial of aspirin as adjuvant therapy for node-positive, HER2 negative breast cancer: The ABC trial

UC16-0403 A randomized, placebo-controlled, double-blind, Phase II trial of nanoparticle albumin-bound paclitaxel (nab-paclitaxel, Abraxane) with or without mifepristone for advanced, glucocorticoid receptor-positive, triple-negative breast cancer

Gastrointestinal Cancer

NRG-GI004/SWOG-S1610 Colorectal Cancer Metastatic dMMR Immuno-Therapy (COMMIT) Study: A Randomized Phase III Study of mFOLF0X6/Bevacizumab Combination Chemotherapy with or without Atezolizumab or Atezolizumab Monotherapy in the First-Line Treatment of Patients with Deficient DNA Mismatch Repair (dMMR) Metastatic Colorectal Cancer

EA2165: A Randomized Phase II Study of Nivolumab After Combined Modality Therapy (CMT) in High Risk Anal Cancer

A021502 A Randomized Trial of Standard Chemotherapy Alone or Combined with Atezolizumab as Adjuvant Therapy for Patients with Stage III Colon Cancer and Deficient DNA Mismatch Repair

Genitourinary Cancer

Janssen 64091742PCR2001 A Phase II Efficacy and Safety Study of Niraparib in Men with Metastatic Castration-Resistant Prostate Cancer and DNA-Repair Anomalies

AFT-19 A Phase III Study of Androgen Annihilation in High-Risk Biochemically Relapsed Prostate Cancer

PCCTC c16-168 A Randomized Phase II Trial of Abiraterone, Olaparib, or Abiraterone + Olaparib in Patients with Metastatic Castration-Resistant Prostate Cancer with DNA Repair Defects

EA8163 Cabazitaxel with Abiraterone versus Abiraterone alone Randomized Trial for Extensive Disease Following Docetaxel; The CHAARTED 2 Trial.

Gynecologic Cancer

GOG0238 Randomized trial of pelvic irradiation with or without concurrent weekly cisplatin in patients with pelvic-only recurrence of carcinoma of the uterine corpus

NRG-GY005 A randomized Phase II/III study of the combination of cediranib and olaparib compared to cediranib or olaparib alone, or standard of care chemotherapy in women with recurrent platinum-resistant or -refractory ovarian, fallopian tube or primary peritoneal cancer

GOG0264 A randomized Phase II trial of paclitaxel and carboplatin versus bleomycin, etoposide and cisplatin for newly diagnosed advanced-stage and recurrent chemo-naïve stage sex cord-stromal tumors of the ovary

UC13-1235 Randomized, placebo-controlled Phase II trial of metformin in conjunction with chemotherapy followed by metformin maintenance therapy in advanced-stage ovarian, fallopian tube and primary peritoneal cancer adjuvant treatment

Pilot Study Pilot study of the impact of early palliative care on quality of life in recurrent ovarian, fallopian tube and primary peritoneal cancer

AGCT1531 A Phase III Study of Active Surveillance for Low Risk and a Randomized Trial of Carboplatin Versus Cisplatin for Standard Risk Pediatric and Adult Patients with Germ Cell Tumors

NRG-GY009 A Randomized Phase II/III Study of Pegylated Liposomal Doxorubicin and CTEP-Supplied Atezolizumab (IND 134427) Versus Pegylated Liposomal Doxorubicin/Bevacizumab and CTEP-Supplied Atezolizumab Versus Pegylated Liposomal Doxorubicin/Bevacizumab in Platinum Resistant Ovarian Cancer

GOG-3026 A Phase II Trial of Ribociclib (LEE011) Plus Letrozole in Women with Recurrent Low-Grade Serous Carcinoma of the Ovary or Peritoneum

Head and Neck Cancers

HCN Tissue bank tissue/body fluid procurement and clinical data collection for patients with malignancies of the head and neck area and/or premalignant changes

EA3132 Phase II Randomized Trial of Radiotherapy with or without Cisplatin for Surgically Resected Squamous Cell Carcinoma of the Head and Neck (SCCHN) with TP53 Sequencing

Merck 3475-689 A Phase III Randomized, Open-label Study to Evaluate Pembrolizumab as Neoadjuvant Therapy and in Combination with Standard of Care as Adjuvant Therapy for Stage III-IVA Resectable, Locoregionally Advanced Head and Neck Squamous Cell Carcinoma (LA HNSCC)

Enzychem EC-18-202 A Phase 2, Multicenter, Randomized, Double-Blind, Placebo-Controlled Study to Evaluate the Safety and Efficacy of EC-18 in Altering the Severity and Course of Oral Mucositis in Patients Being Treated with Concomitant Chemoradiation Therapy for Cancers of the Mouth, Oropharynx, Hypopharynx and Nasopharynx.

Hematology

UC14-0899 Phase II randomized trial of continuation of post-transplant maintenance with single-agent lenalidomide versus consolidation/maintenance with ixazomib-lenalidomide-dexamethasone in patients with residual myeloma

Connect MDS AML The Myelodysplastic Syndromes (MDS) and Acute Myeloid Leukemia (AML) Disease Registry

E1910 Phase III randomized trial of blinatumomab for newly diagnosed BCR-ABL-negative B lineage acute lymphoblastic leukemia in adults

CIBMTR Research database for hematopoietic cell transplantation, other cellular therapies and marrow toxic injuries

UC13-1406 Prospective, Multi-Center Phase I/II Trial of Lenalidomide and Dose-Adjusted EPOCH-R in MYC-Associated B-Cell Lymphomas

E1A11 Randomized Phase III Trial of Bortezomib, Lenalidomide and Dexamethasone (VRd) Versus Carfilzomib, Lenalidomide and Dexamethasone (CRd) Followed by Limited or Indefinite Duration Lenalidomide Maintenance in Patients with Newly Diagnosed Symptomatic Multiple Myeloma (ENDURANCE)

A061202 A Phase I/II Study of Pomalidomide, Dexamethasone and Ixazomib Versus Pomalidomide and Dexamethasone for Patients with Multiple Myeloma Refractory to Lenalidomide and Proteasome Inhibitor-Based Therapy

TG Therapeutics TGR-205 A Phase IIb Randomized Study to Assess the Efficacy and Safety of the Combination of Ublituximab + TGR-1202 with or without Bendamustine and TGR-1202 Alone in Patients with Previously Treated Non-Hodgkin's Lymphoma

A041501: A Phase III Trial to Evaluate the Efficacy of the Addition of Inotuzumab Ozogamicin (a Conjugated Anti-CD22 Monoclonal Antibody to Frontline Therapy in Young Adults (ages 18-39) with Newly Diagnosed Precursor B-Cell ALL.

UC16-1138 Open-label, Single-arm, Phase 2 Study of Initial Treatment with Elotuzumab, Carfilzomib (Kyprolis), Lenalidomide (Revlimid) and Low Dose Dexamethasone (E-KRD) in Newly Diagnosed, Multiple Myeloma Requiring Systemic Chemotherapy

A041702 A Randomized Phase III Study of Ibrutinib Plus Obinutuzumab Versus Ibrutinib Plus Venetoclax and Obinutuzumab in Untreated Older Patients (> 70 years of Age) with Chronic Lymphocytic Leukemia (CLL)

EA9161 A Randomized Phase III Study of the Addition of Venetoclax to Ibrutinib to Obinutuzumab versus Ibrutinib and Obinutuzumab in Untreated Younger Patients with Chronic Lymphocytic Leukemia (CLL)

Lung Cancer

Merck 3475-789 A Randomized, Double-Blind, Phase 3 Study of Pemetrexed + Platinum Chemotherapy with or without Pembrolizumab (MK-3475) in TKI-Resistance EGFR Mutated Patients in Metastatic Non-Squamous, Non-Small Cell Lung Cancer (NSCLC) Participants (KEYNOTE 789)

LungMAP A Master Protocol to Evaluate Biomarker-Driven Therapies and Immunotherapies in Previously-Treated Non-Small Cell Lung Cancer

Merck 3475-799 A Phase 2 Trial of Pembrolizumab (MK-3475) in Combination with Platinum Doublet Chemotherapy and Radiotherapy for Participants with Unresectable, Locally Advanced Stage III Non-Small Cell Lung Cancer (NSCLC) (KEYNOTE-799)

S1900A A Phase II Study of Rucaparib in Patients with Genomically LOH High And/or Deleterious BRCA 1 / 2 Mutation Stage IV or Recurrent Non-Small Cell Lung Cancer (Lung-MAP Sub-study)

S1800A A Phase II Study of Ramucirumab Plus MK3475 (Pembrolizumab) versus Standard of Care for Patients with Previously Treated Immunotherapy for Stage IV or Recurrent Non-Small Cell Lung Cancer (Lung-MAP Non-Matched Sub-Study)

EA5163/S1709 INSIGNA A Randomized, Phase III Study of Firstline Immunotherapy Alone or In Combination with Chemotherapy Induction/Maintenance or Post-progression in Advanced, Nonsquamous, Non-Small Cell Lung Cancer (NSCLC) with Immunobiomarker Signature-driven Analysis

NRG LU003 A Biomarker-Driven Protocol for Previously Treated ALK-Positive Non-Squamous NSCLC Patients: The NCI-NRG ALK Master Protocol

Helsinn ANAM 17-21 A Phase 3, Randomized, Double-Blind, Placebo-Controlled, Multicenter Study of Evaluated the Efficacy and Safety of Anamorelin HCL for the Treatment of Malignancy Associated Weight Loss and Anorexia in Adult Patients with Advanced Non-Small Cell Lung Cancer (NSCLC)

Sarcoma

A091401 Randomized Phase II study of nivolumab with or without ipilimumab in patients with metastatic or unresectable sarcoma

Skin Cancer

EA6141 Randomized Phase II/III study of nivolumab plus ipilimumab plus sargramostim versus nivolumab plus ipilimumab in patients with unresectable stage III or stage IV melanoma

EA6134 A Randomized Phase III Trial of Dabrafenib + Trametinib followed by Ipilimumab + Nivolumab at Progression Versus Ipilimumab + Nivolumab followed by Dabrafenib + Trametinib at Progression in Patients with Advanced BRAF/V600 Mutant Melanoma

Other

EAY131 Molecular Analysis for Therapy Choice (MATCH)

EAY131-C2 Crizotinib in patients with tumors with MET exon 14 deletion

EAY131-T GDC-0449 (vismodegib) in patients with tumors (except basal cell skin carcinoma) with smoothened (SMO) or patched 1 (PTCH1) mutations

EAY131-E AZD9291 in patients with tumors having EGFR T790M mutations (except non-small cell lung cancer) or rare activating mutations of EGFR

EAY131-V Phase II study of sunitinib in patients with tumors with c-kit mutations (excluding GIST, renal cell carcinoma or pancreatic neuroendocrine tumor)

EAY131-Z1C Phase II Study of Palbociclib (PD-0332991) in Patients with Tumors with CDK4 or CDK6 Amplification

EAY131-Z1E LOXO-101 in Patients with Tumors with NTRK Fusions

EAY131-Z1F Phase II Study of Copanlisib in Patients with Tumors with PIK3CA Mutations (PTEN Loss Allowed)

EAY131-Z1H Phase II Study of Copanlisib in Patients with Tumors with Deleterious PTEN Sequencing Result and PTEN Expression by IHC

EAY131-Z1G Phase II Study of Copanlisib in Patients with Tumors with PTEN Loss by IHC and any PTEN Sequencing Result

EAY131-M Phase II Study of MLN0128 (TAK-228) in Patients with Tumors with TSC1 or TSC2 Mutations

EAY131-L Phase II Study of MLN0128 (TAK-228) in Patients with Tumors with mTOR Mutations

EAY131-J Trastuzumab and Pertuzumab (HP) in Patients with Non-Breast, Non-Gastric/GEJ Cancers with HER2 Amplification

EAY131-K1 Phase II Study of JNJ-42756493 (Erdafitinib) in Patients with Tumors with FGFR Amplifications

EAY131-K2 Phase II Study of JNJ-42756493 (Erdafitinib) in Patients with Tumors with FGFR Mutations or Fusions

ACCRU SC-1601 A Phase III, randomized, controlled, double-blind study evaluating the safety of two doses of apixaban for secondary prevention of cancer-related venous thrombosis in subjects who have completed at least six months of anticoagulation therapy

Breast Surgery

EH15-297 A randomized Phase III trial comparing axillary lymph node dissection to axillary radiation in breast cancer patients (cT1-3 N1) who have positive sentinel lymph node disease after neoadjuvant chemotherapy—Alliance A011202

EH15-308 Using genetic risk scores to assess the efficacy of mammography screening among women diagnosed with breast cancer

EH16-063 Germline genetic profiles associated with contralateral breast cancer patients

EH14-020 Piloting an In-Visit Decision Aid for Surgical Decision-Making in Breast Cancer Patients

EH17-026 A Database of Contralateral Breast Cancer at NorthShore University HealthSystem

EH17-045 Impact of an In-Visit Decision Aid on Uninformed Decision-Making for Contralateral Prophylactic Mastectomy

EH16-343 Retrospective Review of HER2/neu Positive Breast Cancer Patients to Examine Loco-Regional Recurrence Rates

EH18-203 Mindfulness-Enhanced Decision Intervention to Aid Treatment Election—Breast Cancer

EH17-072 Comparison of Operative to Monitoring and Endocrine Therapy (COMET) Trial for Low-Risk DCIS

EH17-209 Genetic Determinants of Cooperative Interactions on Breast Cancer Intratumor Heterogeneity

EH18-243 Tell Me Where It Hurts: The Ergonomic Effects of Mastectomies on the Operating Surgeon

Colorectal Surgery

EH12-468 N1048 A Phase II/III trial of neoadjuvant FOLFOX with selective use of combined modality chemoradiation versus preoperative combined modality chemoradiation for locally advanced rectal cancer patients undergoing low anterior resection with total mesorectal excision

EH16-280 The creation and establishment of a colorectal tumor database and biorepository

Head and Neck Surgery

EH19-176 Transoral Robotic Surgery (TORS) Database

EH17-040 Surveillance Imaging Practice Patterns in Head and Neck Cancer Patients

EH17-116 Lipid Tissue from Head and Neck Cancer

EH19-145 KTP Laser Treatment of Early Glottic Cancer: A Multi-Institutional Retrospective Study

EH19-081 Assessment of Allergies in Patients with Oral Cavity Cancers

EH18-179 The Patient Decision-Making Process after a Diagnosis of Oral Cavity Cancer

EH19-021 A Multicenter Trial of a Patient Education Handout for Head and Neck Free Flap Surgery

Pancreatic Cancer

EH18-265 A Phase III Multicenter, Open-Label Randomized Controlled Trial of Cefoxitin Versus Piperacillin-Tazobactam as Surgical Antibiotic Prophylaxis in Patients Undergoing Pancreatoduodenectomy

EH08-197T Clinical pancreatic cancer database

EH13-433 Comprehensive Assessments for Clinical Care and Surgical Management Among Individuals with Pancreatic Pathology

EH02-186 The Pancreatic Sample Repository

EH17-132 Assessment of Tumor and Treatment Factors as Predictors of Venous Thromboembolism in Patients with Pancreatic Adenocarcinoma Undergoing Pancreatoduodenectomy, and Efficacy of Pharmacologic Prophylaxis

Lung and Esophageal Cancer

EH98-136 Establishment and maintenance of a comprehensive thoracic tumor data registry and biorepository

EH15-121 E4512 A Phase III double-blind trial for surgically resected early-stage non-small cell lung cancer: Crizotinib versus placebo for patients with tumors harboring the anaplastic lymphoma kinase (ALK) fusion protein

EH15-122 Adjuvant Lung Cancer Enrichment Marker Identification and Sequencing Trial (ALCHEMIST)

EH15-123 A081105 Randomized, double-blind, placebo-controlled study of erlotinib or placebo in patients with completely resected epidermal growth factor receptor (EGFR) mutant non-small cell lung cancer (NSCLC)

EH16-268 EA5142 Adjuvant nivolumab in resected lung cancers (ANVIL): A randomized Phase III study of nivolumab after surgical resection and adjuvant chemotherapy in non-small cell lung cancers

EH18-162 Inherited Cancer Panel Performance in Predicting Outcomes Among Patients Diagnosed with Lung Cancer

EH16-356 Clinical Characteristics of Anti-PD-1/PD-L1 relapses in Non-Small Cell Lung Cancer (NSCLC)

EH16-079 Retrospective Chart Review Study to look at adequacy of lymph node staging in patients undergoing curative anatomic resection for non-small cell lung cancer

EH16-362 Natural History of Indeterminate Lung Nodules

Thyroid Surgery

EH14-058 The establishment of a multidisciplinary comprehensive database of patients for thyroid nodular disease

EH18-163 Predictors of Surgery and Malignancy Among Thyroid Nodule Patients

Genitourinary Cancer

EH09-043 A multi-phase study of active surveillance for men with clinical stage T1c or T2a localized prostate cancer

EH10-089 Periprostatic fat as a promoter of prostate cancer progression

EH10-379 Three-dimensional transrectal ultrasound for prostate cancer diagnosis and surveillance

EH13-049 Compliance and outcomes with penile rehabilitation in men after prostate cancer treatment

EH13-088 Mind-body health in uro-oncology

EH13-250 Cancer susceptibility: The ICPG study (International Consortium for Prostate Cancer Genetics)

EH13-446 A retrospective review of patients who have been removed from study EH09-043: A multi-phase study of active surveillance for men with clinical stage T1c or T2a localized prostate cancer

EH14-133 The Lived Experience of Men with Sexual Dysfunction after Prostate Cancer Treatment

EH15-240 Urologic oncology: Costs and complications

EH14-206 Nanocytology to mitigate overdiagnosis of prostate cancer

EH14-361 SPORE Project 1: Impact of Germline Genetic Variants and Failure of Active Surveillance for Prostate Cancer

EH16-009 Clinical validation of a urine-based assay with genomic and epigenomic markers for predicting recurrence during non-muscle invasive bladder cancer surveillance

EH16-183 Evaluation of the utility of the prostate health index in routine clinical practice

EH16-202 Detecting copy number alterations (CNAs) of MYC and PTEN in biopsy samples to predict clinical outcomes in prostate cancer

EH16-232 Trends in upper tract urothelial treatment

EH16-240 Timing of artificial urinary sphincter placement

EH15-124 Reducing the Effects of Active Surveillance Stress, Uncertainty and Rumination thru Engagement in Mindfulness Education (REASSURE ME)

EH15-403 Mindfulness online for symptom alleviation and improvement in cancer of the prostate (MOSAIC-P)

EH16-236 Novel genetic markers for predicting clinical outcomes in patients with high-grade superficial bladder cancer

EH16-239 The impact of using genetic risk scores (GRSs) for inherited risk assessment of prostate cancer

EH16-237 A Randomized Study of Enzalutamide in Patients with Localized Prostate Cancer Undergoing Active Surveillance (ENACT)

EH16-387 Risk-Stratification of Prostate Cancers via Field Carcinogenesis Nanocytology

Cancer Data Summary 2018

Incidence of Cancer 2018

In 2018, 4,258 new cancer cases were accessioned into the NorthShore University HealthSystem (NorthShore) Cancer Registry. Of those 4,059 cases (95%) were analytic. By definition, analytic cases are those patients newly diagnosed with malignant neoplasm and/or who have received all or part of their first course of treatment at one of our hospitals. The remaining 199 cases (5%) were non-analytic. Non-analytic cases are patients initially diagnosed and treated at another facility who now are receiving treatment for progression or recurrence of their disease at NorthShore. Details by site are provided in Table 1.

Class of Case 2018

Class of Case divides cases into two groups, analytic cases (Class 00-22) and non-analytic cases (Class 30-49).

Class 00-14, which account for 3,486 cases, were those malignancies diagnosed at one of our four hospitals or in an office of our medical group. Once diagnosed with cancer, 3,275 (94%) of our patients remained at NorthShore for their treatment. Class 20-22, totaling 573 cases, were diagnosed elsewhere and referred here for treatment. Class 30-49, a total of 199 cases, were diagnosed and treated elsewhere and referred here for treatment of a recurrence or progression of disease.

Overall Top 10 Sites 2018

The top 10 cancers seen at NorthShore are breast (830), prostate (472), lung and bronchus (359), skin (304), lymphoma (179), bladder (176), central nervous system (177), colon (167), corpus uteri (164) and thyroid (135). These top 10 sites represent 70% of all cancers seen at NorthShore.

Among women, breast cancer continues to be our top site representing 20% of the total cases seen at NorthShore. The next most frequent cancers seen in women were lung, corpus uteri, skin and central nervous system.

Among men, prostate cancer continues to be our top site representing 11% of the total cases seen at NorthShore. The next most frequent cancers seen in men were skin, lung, bladder and lymphoma.

Table 1: Incidence of Cancer—2018 Data Summary

Primary Site	Analytic	Non-Analytic	Total	Percentage
ORAL CAVITY & PHARYNX	86	4	90	2.1
Lip	1	0	1	0.0
Tongue	31	3	34	0.8
Salivary Glands	13	0	13	0.3
Floor of Mouth	3	1	4	0.1
Gum & Other Mouth	13	0	13	0.3
Nasopharynx	1	0	1	0.0
Tonsil	12	0	12	0.3
Oropharynx	6	0	6	0.1
Hypopharynx	5	0	5	0.1
Other Oral Cavity & Pharynx	1	0	1	0.0
DIGESTIVE SYSTEM	559	19	578	13.6
Esophagus	30	1	31	0.7
Stomach	55	5	60	1.4
Small Intestine	15	1	16	0.4
Colon Excluding Rectum	165	2	167	3.9
Rectum & Rectosigmoid	69	2	71	1.7
Anus, Anal Canal & Anorectum	14	3	17	0.4
Liver & Intrahepatic Bile Duct	43	2	45	1.1
Gallbladder	14	0	14	0.3
Other Biliary	20	0	20	0.5
Pancreas	123	3	126	3.0
Retroperitoneum	1	0	1	0.0
Peritoneum, Omentum & Mesentery	4	0	4	0.1
Other Digestive Organs	6	0	6	0.1
RESPIRATORY SYSTEM	379	8	387	9.1
Nose, Nasal Cavity & Middle Ear	3	1	4	0.1
Larynx	22	1	23	0.5
Lung & Bronchus	353	6	359	8.4
Trachea, Mediastinum & Other Respiratory Organs	1	0	1	0.0
BONES & JOINTS	3	0	3	0.1
SOFT TISSUE (including Heart)	24	4	28	0.7
SKIN EXCLUDING BASAL & SQUAMOUS	296	8	304	7.1
Melanoma—Skin	276	7	283	6.6
Other Non-Epithelial Skin	20	1	21	0.5
BREAST	810	20	830	19.5
FEMALE GENITAL SYSTEM	248	32	280	6.6
Cervix Uteri	17	0	17	0.4
Corpus & Uterus, NOS	158	6	164	3.9
Ovary	49	5	54	1.3
Vagina	1	4	5	0.1
Vulva	8	15	23	0.5
Other Female Genital Organs	15	2	17	0.4
MALE GENITAL SYSTEM	457	34	491	11.5
Prostate	438	34	472	11.1
Testis	18	0	18	0.4
Penis	1	0	1	0.0
URINARY SYSTEM	286	14	300	7.0
Urinary Bladder	164	12	176	4.1
Kidney & Renal Pelvis	105	2	107	2.5
Ureter	4	0	4	0.1
Other Urinary Organs	13	0	13	0.3
EYE & ORBIT	5	1	6	0.1
BRAIN & OTHER NERVOUS SYSTEMS	214	9	223	5.2
Brain	43	3	46	1.1
Cranial Nerves & Other Nervous Systems	171	6	177	4.2
ENDOCRINE SYSTEM	203	17	220	5.2
Thyroid	128	7	135	3.2
Other Endocrine including Thymus	75	10	85	2.0
LYMPHOMA	168	11	179	4.2
Hodgkin's Lymphoma	15	1	16	0.4
Non-Hodgkin's Lymphoma	153	10	163	3.8
MYELOMA	68	7	75	1.8
LEUKEMIA	120	7	127	3.0
Lymphocytic Leukemia	64	3	67	1.6
Acute Lymphocytic Leukemia	3	1	4	0.1
Chronic Lymphocytic Leukemia	60	2	62	1.5
Other Lymphocytic Leukemia	1	0	1	0.0
Myeloid & Monocytic Leukemia	53	4	57	1.3
Acute Myeloid Leukemia	41	1	42	1.0
Chronic Myeloid Leukemia	12	3	15	0.4
Other Leukemia	3	0	3	0.1
Other Acute Leukemia	1	0	1	0.0
Aleukemic, Subleukemic & NOS	2	0	2	0.0
MESOTHELIOMA	3	0	3	0.1
KAPOSI SARCOMA	3	0	3	0.1
OTHER & UNKNOWN SITES	129	3	132	3.1
TOTAL	4,059	199	4,258	100.0

Academic Leadership Roles and Awards 2018–2019

Kellogg Cancer Center physicians are active in a broad range of regional and national organizations.

Mihir Bhayani, MD

- Member, NCI Rare Tumors Task Force
- American Board of Otolaryngology Writers Task Force
- AHNS Prevention and Early Detection Committee, Survivorship Committee
- Program Committee International Federation for Head and Neck Oncology and Surgery

Editorial:

- Manuscript Reviewer: *Oral Oncology*, *Head and Neck*, *JAMA—Otolaryngology Head and Neck Surgery*, *Oncotarget*, *Otolaryngology Head and Neck Surgery*

Bruce Brockstein, MD

- Member, Head and Neck Committee, Eastern Cooperative Oncology Group, 2000-present
- *Chicago* magazine Top Doctors, 2006, 2008, 2010, 2012, 2014, 2016

Editorial:

- Manuscript Reviewer: *Head and Neck*, *Annals of Surgical Oncology*
- Grant Reviewer: Cancer Research UK
- *UpToDate* (Online Textbook), Chapter Editor, Head and Neck Cancer, 2000-present

Nicholas Campbell, MD

Editorial:

- Reviewer: *Clinical Lung Cancer*, *Case Reports*

Claus Fimmel, MD, CPE

- Advisory Board, American Liver Foundation, Chicago Chapter, 2008-present

Editorial:

- The *Open Proteomics Journal* (ISSN 1875-0397) (2008-present)
- *Liver Cancer Review Letters* (2009-present)

David Grinblatt, MD

- Community Oncology Committee, Alliance for Clinical Trials in Oncology, 2010-present

Editorial:

- Ad Hoc Reviewer: *Annals of Oncology*, 1996-present

Brian Helfand, MD

- Principal Investigator, Prostate Cancer SPOR project concerning genetics underlying active surveillance failures
- Visiting Professorships in Shanghai China
- Member, Bladder Cancer Consortium and Guideline Committee
- Member, Relative Value Scale Update Committee (RUC)
- 45 peer-reviewed publications this year

Thomas Hensing, MD

- Respiratory Health Association, Lung Cancer Initiative Advisory Council, 2005-present
- Alliance for Clinical Trials in Oncology, Respiratory Committee Member, 2010-present

Melissa Hogg, MD

- Co-Chair of the HPB Task Force, SAGES
- Co-Chair of the HPB Disease Site Working Group, SSO
- Associate Editor, "Surgical Techniques" Division, *Journal of Surgical Oncology*
- Chair of the Training and Implementation Committee for the International Evidence-Based Consensus Guidelines of Minimally Invasive Pancreas Resections
- Founding Member of the International Consortium on Minimally Invasive Pancreatic Surgery

Jason Kaplan, MD

- Member, Southwestern Oncology Group (SWOG), Committees on Lymphoma, Myeloma, and Leukemia, 2015-present

Karen Kaul, MD, PhD

- American Board of Pathology: Appointed Trustee, 2011-present; ACGME Residency Program Review Committee, 2012-present; Secretary, Executive Committee, 2015-present; Communications Task Force, 2012-present; Chair, Test Development & Advisory Committee for Molecular Genetics, 2012-present; Vice President, Executive Committee, 2017; President, Executive Committee, 2018; ABP/PROD Entrustable Professional Activities Task Force, 2017; Maintenance of Certificate Committee, 2012-present; Credentials Committee, 2012-present; ACGME Milestones 2 Committee, 2018-present
- College of American Pathologists, Member, Executive Advisory Board, *Archives of Pathology & Laboratory Medicine*, 2015-present
- PRODS (Pathology Residency Program Directors), Member PRODS Council, 2009-present; Council of Medical Specialty Societies/OPDA representative, 2009-present; Training Residents in Genomics (TRIG) Joint Committee, 2010-present
- Association of Pathology Chairs, Member, 2012-present; elected Chair, GME Committee, 2015-2018; Executive Council, 2015-present
- Ad Hoc Member, NIH/NCI P01 reviewer, 2001-present
- SBIR Review Panels, various (Panel Chairperson 2010-present), 2008-present
- Peer Reviewer, Prostate Cancer Foundation, 2010-present
- Peer Reviewer, University of Chicago CTSA Pilot Program, 2011-present
- Chair, NorthShore Auxiliary Breast/Ovarian Research Program, 2013-present

Editorial Activities:

- Editorial Board, *Annual Review of Pathology*, 2011-present
- Associate Editor, *Academic Pathology*, 2014-present
- Executive Advisory Board, *Archives of Pathology & Laboratory Medicine*, 2015-present
- Ad Hoc Reviewer: *Cell Growth and Differentiation*, *Pediatric Pathology*, *Cancer*, *Clinical Microbiology Reviews*, *Tubercle, Chest*, *Archives of Pathology & Laboratory Medicine*, *Clinical Chemistry*, *American Journal of Clinical Pathology*, 1990-present

Janardan Khandekar, MD

Editorial:

- Reviewer: *JAMA Oncology*, *Journal of National Cancer Institute*
- Associate Editor, *Journal of Surgical Oncology*

Katherine Kopkash, MD

- Oncoplastic Surgery Committee for the American Society of Breast Surgeons
- Chair of Oncoplastic Breast Surgery for Beginners Curriculum Committee, American Society of Breast Surgeons
- Chicago Surgical Society Young Surgeons Committee

Seth Krantz, MD

- Invited Question Writer, Self-Education Self-Assessment in Thoracic Surgery (SESATS) XIII (13), American Board of Thoracic Surgery

Editorial:

- Reviewer: *Chest*, *American Journal of Clinical Oncology*, 2016-present; *Annals of Thoracic Surgery*, 2015-present; *Journal of Thoracic and Cardiovascular Surgery*, 2014-present; *Annals of Surgical Oncology*, 2011-present

Robert Marsh, MD

- Eastern Cooperative Oncology Group, GI Committee

Editorial Work:

- *American Journal of Clinical Oncology*, *British Medical Journal*, *Cancer*, *Cancer Management and Research*, *Cell*, *European Journal of Surgical Oncology*, *Journal of Cancer Research and Clinical Oncology*, *Journal of Surgical Oncology*, *Journal of the Pancreas*, *Lancet Oncology*, *Public Library of Science*, *Rogers Medical Intelligence Solutions CME Programs*, *Southern Medical Journal*, *Therapeutic Advances in Gastroenterology*

Leslie Mendoza Temple

- Guest Editor, Complementary Therapies in Medicine special issue of *Medical Cannabis*, for 2021 publication

Catherine Pesce, MD

- Young Surgeons Committee of the Chicago Surgical Society

Richard Prinz, MD

- Editorial Review Board: *Surgery*, *Langenbeck's Archives of Surgery*

Gustavo Rodriguez, MD

- Member, Cancer Prevention and Control Committee, Gynecologic Oncology Group/NRG, 1997-present
- Advisory Board, Gilda's Club, Chicago, IL, 2004-present

Carol Rosenberg, MD

- Chair of 2018 Cancer Survivorship Symposium, ASCO-ACP-AAFP Advancing Care and Research—A Primary Care and Oncology Collaboration
- Patient-Centered Outcomes Research Initiative (PCORI) National Comparative Effectiveness Evaluation of Survivorship Programs in the United States. LIFE Site Project Supervisor—LIFE Program Participant Program
- Research Investigator, Women's Health Initiative study, National Institutes of Health (NIH), 1999-present

Awards:

- Myra Rubenstein Weis LIFE Program Grant Award Recipient: Myra Rubenstein Weis Health Resource Center Foundation, NorthShore University HealthSystem, May 2019

continued >

Prem Seth, PhD

- Editorial Board, Cancer Gene Therapy
- Editorial Board, Molecular Therapy—Oncolytics

Daniel Shevrin, MD

- Director, Advocacy Core Prostate SPORE, Northwestern University, 2003-present
- Medical Director, NorthShore Chapter of US TOO Prostate Cancer Support Group, 2002-present
- Board Member, Cancer Wellness Center; Northbrook, IL, 2010-present
- Member, National Cancer Institute (NCI) GU Steering Committee, 2014-2017

Mark Sisco, MD, FACS

- Program Committee, Breast Subsection, American Society of Plastic Surgeons, 2015-present
- In-Service Examination Committee, American Society of Plastic Surgeons, 2016-present

Editorial:

- Editorial Board Member and Peer Reviewer, *Microsurgery*, 2017
- Peer Reviewer, *Cancer Control*, 2017
- Editorial Board Member and Peer Reviewer, *Journal of Surgical Oncology*, 2014-present
- Peer Reviewer, *Journal of Surgical Research*, 2010-present

Norman Smith, MD

- Member, American Urological Association Relative Value Scale Update Committee (RUC) (2016-present); Coding and Reimbursement Committee (2016-present); Public Policy Council (2015-present)
- Vice Chair, AMA/Specialty Society Relative Value Scale Update Committee (RUC) Relativity Assessment Workgroup (2019-present)

Mark Talamonti, MD

- Society of Surgical Oncology, Foundation Board of Directors, 2014-2019; Chairman, Corporate Relations Committee, 2017-2019; Chairman, Local Arrangements Committee, 2017-2018
- Western Surgical Association, Membership Committee, 2012-present; Treasurer, 2012-present, Elected President, 2017-2018
- Americas Hepato-Pancreato-Biliary Association, 2018-2020; Finance Committee, 2019-2021; AHPBA Member at Large—Executive Council

Editorial:

- Editorial Board: *Annals of Surgical Oncology*, *Journal of Surgical Oncology* (Section Editor, *Hepatobiliary and Pancreas*)
- Invited Reviewer: *American Journal of Surgery*, *Annals of Surgery*, *Archives of Surgery*, *Cancer*, *Journal of the American College of Surgeons*, *Journal of Clinical Oncology*, *Oncology*, *Surgery*, *World Journal of Surgery*

Awards:

- Outstanding Faculty Teacher Award, Department of Surgery, University of Chicago Pritzker School of Medicine, 2017 and 2018
- Castle Connelly and *Chicago* magazine, Top Doctors in America and Chicago, 1995-2018
- *U.S. News & World Report*, Top 1% of Surgeons in America, 2007-2018

Lauren Wiebe, MD

- Palliative Care Research Cooperative Group, NorthShore Site Organizational Lead, 2017-present
- Palliative Care Research Cooperative Group, Scientific Review Committee Member, 2016-2019
- Palliative Care Research Cooperative Group, Junior Investigator, 2014-present
- Coleman Supportive Oncology Collaborative, Advanced Disease Team, Member, 2016-2018

- 2019 Special Guest Speaker at the PANCan PurpleStride, June 29, 2019 @ Soldier Field

Editorial:

- Invited Peer Reviewer, *Journal of Oncology Practice*

Awards:

- Coleman Foundation Grant, 2019-2020

David J. Winchester, MD

- Director, Rice Foundation, 1998-present
- American Joint Committee on Cancer (AJCC), 2004-present; Vice-Chairman, 2011-present; Committee, 2008-present; Education and Promotions Committee, 2007-present
- American College of Surgeons, Metropolitan Chicago District #2 Committee on Applicants, 1999-present
- Member, Alliance ACS Clinical Research Program, 2012-present
- Elected Member, American Surgical Association, April 2017

Editorial:

- Member of Editorial Board, *American Journal of Clinical Oncology*, 2006-present; Associate Editor, 2009-present
- Member of Editorial Advisory Board, *American Family Physician*, 2012-present
- Member of Editorial Board, *Journal of Surgical Oncology*, 2015-present
- Ad Hoc Reviewer: *Annals of Surgical Oncology*, *British Journal of Cancer*, *Cancer*, *Canadian Medical Association Journal*, *Clinical Breast Cancer*, *Cancer Control: Journal of the Moffitt Cancer Center*, *Journal of Clinical Oncology*, *The Lancet Oncology*, *World Journal of Surgical Oncology*

Katharine Yao, MD

- Member, Patient-Reported Outcomes Working Group, American Society of Breast Surgeons
- Member, Publications Committee, American Society of Breast Surgeons
- Member, Practice Advocacy Committee, American Society of Breast Surgeons
- Alliance for Clinical Trials, Prevention Committee, Women's Cancer Working Group Chair
- Vice Chair, National Accreditation Program for Breast Centers
- American College of Radiology, Supplemental Screening for Breast Density, Appropriateness Criteria Breast Imaging Committee
- President-Elect, Chicago Surgical Society
- Dudley P. Allen Visiting Professor at University Hospitals Cleveland Medical Center, September 25, 2019

Editorial Boards:

- *Surgical Oncology*, 2017-2018
- *Annals of Surgery*, 2017-2018

Grant Awards:

- Patient Values in Surgical Decision Making for Breast Cancer Surgery. John Wayne Cancer Foundation Grant. Award Recipient, PI: Yao, K. 5/2018-6/2019
- Implementing and Disseminating Risk Stratified Screening for Breast Cancer at NorthShore. Phase I: Identification of High Risk Women (The IDENTIFY Study), Breast and Ovarian Research Pilot, NorthShore University HealthSystem, PI: Yao, K. 5/2019-6/2020
- Invited speaker: Dutch Breast Cancer Conference, Bossche Mamma Congress, June 18-19, 2019

Locations

Chicago Lake Shore Medical Office (CH)

680 North Lake Shore Drive, Suite 924
Chicago, IL 60611

Evanston Breast Center (EVB)

2650 Ridge Avenue, Evanston, IL 60201

Evanston Hospital (EH)

2650 Ridge Avenue, Evanston, IL 60201

Evanston Kellogg Cancer Center (EVK)

2650 Ridge Avenue, Evanston, IL 60201

Evanston Specialty Suites (EV)

1000 Central Street, Evanston, IL 60201

Glenbrook Breast Center (GBB)

2050 Pfingsten Road, Suite 130
Glenview, IL 60026

Glenbrook Hospital (GBH)

2100 Pfingsten Road, Glenview, IL 60026

Glenbrook John and Carol Walter Ambulatory Care Center (GB)

2180 Pfingsten Road, Glenview, IL 60026

Glenbrook Kellogg Cancer Center (GBK)

2180 Pfingsten Road, Suite 1000
Glenview, IL 60026

Glenbrook Medical Building (GBM)

2050 Pfingsten Road, Suite 128
Glenview, IL 60026

Glenview Park Center (GP)

2400 Chestnut Avenue, Glenview, IL 60026

Gurnee Ambulatory Care Center (GR)

7900 Rollins Road, Gurnee, IL 60031

Highland Park Ambulatory Care Center (HPS)

757 Park Avenue West, Highland Park, IL 60035

Highland Park Breast Center (HPB)

777 Park Avenue West, Suite B400
Highland Park, IL 60035

Highland Park Hospital (HPH)

777 Park Avenue West, Room 1260
Highland Park, IL 60035

Highland Park Kellogg Cancer Center (HPK)—

Ellen Marks Ambulatory Care Center

757 Park Avenue West, Suite 1810
Highland Park, IL 60035

Highland Park Medical Building (HP)

767 Park Avenue West, Suite B100
Highland Park, IL 60035

Lake Bluff Medical Building (LB)

71 Waukegan Road, Suite 700
Lake Bluff, IL 60044

Mount Prospect Medical Building (MP)

1329 Wolf Road, Mount Prospect, IL 60056

Northbrook Medical Building (NMB)

501 Skokie Boulevard, Northbrook, IL 60062

NorthShore Medical Group (SKM)—Skokie

9933 Woods Drive, Suite 200, Skokie, IL 60077

Skokie Ambulatory Care Center (SK)

9650 Gross Point Road, Suite 3000
Skokie, IL 60076

Vernon Hills Specialty Suites (VH)

225 North Milwaukee Avenue
Vernon Hills, IL 60061

Physician Directory



Matthew Adess, MD
Medical Director, Highland Park Kellogg Cancer Center
 Expertise: GI Oncology; Benign and Malignant Hematology
 Locations: GBK, GR, HPK



Marc Alonzo, MD
 Expertise: Interventional Radiology
 Locations: EH, GB, HP



Thomas Aquisto, MD
Director, Interventional Radiology
 Expertise: Interventional Radiology
 Location: EH



Julian Bailes, MD
Chair, Department of Neurosurgery Co-Director, NorthShore Neurological Institute
 Expertise: Brain and Spine Tumor Surgery
 Locations: EV, HPS



Mihir Bhayani, MD
Division Head, Otolaryngology
 Expertise: Head and Neck Cancers; Thyroid and Parathyroid Surgery; Robotic Surgery
 Locations: EVK, NBM, VH



William Bloomer, MD
Chair, Department of Radiation Oncology
 Expertise: Breast Cancer; Prostate Cancer; Lung and Gastrointestinal Cancer
 Locations: EH, HP



Michael Blum, MD
 Expertise: Urologic Oncology
 Locations: EH, HPS



Bruce Brockstein, MD
Division Head, Hematology/Oncology Medical Director, Kellogg Cancer Center
 Expertise: Head and Neck Cancers; Melanoma; Sarcoma
 Locations: EVK, HPK



Nicholas Campbell, MD
 Expertise: Lung Cancer; Esophageal Cancer; Head and Neck Cancers
 Locations: EVK, HPK



Shakeel Chowdhry, MD
 Expertise: Brain and Spine Tumor Surgery; Stereotactic Radiosurgery
 Locations: EV, GB



Peter Colegrove, MD
 Expertise: Urologic Oncology
 Locations: EV, GB



Allison DePersia, MD
 Expertise: High Risk Breast, Hereditary Cancer
 Location: EV



Hector Ferral, MD
 Expertise: Interventional Radiology
 Location: EH



Claus Fimmel, MD
 Expertise: Liver Diseases; Gastrointestinal Diseases; GI Endoscopy; Liver Biopsy
 Locations: EV, HPS, SK



Alla Gimelfarb, MD
 Expertise: Benign and Malignant Hematology
 Location: GBK



David Grinblatt, MD
 Expertise: Benign and Malignant Hematology
 Locations: EVK, GBK



Britt Hanson, DO
 Expertise: Melanoma; Benign and Malignant Hematology
 Locations: GR, HPK



Brian Helfand, MD, PhD
Division Head, Urology
 Expertise: Prostate Cancer
 Location: GB



Thomas Hensing, MD, MS
Associate Chief Quality Officer
 Expertise: Lung Cancer; Esophageal Cancer
 Locations: EVK, GBK



Marisa Hill, MD
 Expertise: GI Oncology
 Locations: EH, HP



Melissa Hogg, MD, MS
Director, Liver and Pancreas Surgery
 Expertise: Gastrointestinal Surgical Oncology; Pancreatic Cancer; Primary and Metabolic Liver Tumors; Neuro-endocrine Tumors; Cancers of the Stomach & Duodenum; Benign Hepatobiliary; Small Bowel Tumors; Sarcoma
 Locations: EVK, GBM



Peter Hulick, MD, MMSc
Division Head, Medical Genetics Director, Center for Personalized Medicine
 Expertise: Medical Genetics
 Locations: EV, HPK



Mary Tilley Jenkins Vogel, MD
 Expertise: Gynecologic Oncology
 Locations: EVK, GBK, HPK



Lynne Kaminer, MD
Section Chief, Hematology
 Expertise: Benign and Malignant Hematology
 Locations: EVK, GBK



Jason Kaplan, MD
 Expertise: Benign and Malignant Hematology
 Locations: EV, HP, LB



Janardan Khandekar, MD
Director, Center for Molecular Medicine
 Expertise: Endocrine; Breast Cancer
 Location: EVK



Carolyn Kirschner, MD
 Expertise: Gynecologic Oncology; Cancer Survivorship
 Locations: EVK, GBK



Katherine Kopkash, MD
 Expertise: Breast Cancer; Oncoplastic Breast Surgery; Breast Health; Breast Disease and Surgery
 Locations: EVB, GBB



Seth Krantz, MD
 Expertise: Lung Cancer; Esophageal Cancer; Minimally Invasive Thoracic Surgery
 Locations: EVK, HPK, GBK



Lawrence Krause, MD
 Expertise: Breast Cancer; Breast Health; Breast Disease and Surgery
 Locations: GR, HPB, SK

Physician Directory

continued >



Monika Krezalek, MD
 Expertise: Minimally Invasive Colon and Rectal Surgery; Colon and Rectal Cancer; Inflammatory Bowel Disease; Anorectal Surgery; Colonoscopy
 Locations: EV, HPS, GR



Teresa Murray Law, MD
 Expertise: Breast Cancer; Prostate Cancer; Genitourinary Cancer
 Locations: EVK, GR, HPK



Ross Levy, MD
 Expertise: Mohs Surgery; Dermatologic Surgery; Laser Surgery
 Location: SKM



John Linn, MD
Vice Chair for Surgery, Glenbrook Hospital
 Expertise: Gastrointestinal Surgical Oncology Including Stomach and Esophagus; Weight Loss Surgery; General Surgery
 Locations: EV, GBM



Luzheng Liu, MD
 Expertise: General Dermatology; Skin Cancers
 Location: LB



Konanahalli Madhuri, MD
 Expertise: Skin Cancer; General Dermatology
 Location: EV



Robert Marsh, MD
Section Chief, GI Oncology
 Expertise: GI Oncology
 Locations: EVK, GBK



Andrew Melnyk, MD
 Expertise: Medical Genetics
 Locations: EV, GBM



Gregg Menaker, MD
 Expertise: Mohs Surgery; Dermatologic Surgery; Laser Surgery
 Location: SKM



Douglas Merkel, MD
 Expertise: Breast Cancer
 Locations: EVK, GBK, HPK



Ryan Merrell, MD
Program Director, Neuro-Oncology
 Expertise: Brain Cancer; Brain Tumor; Neurologic Complications of Cancer; Tumor in the Central Nervous System (Brain or Spine)
 Locations: EVK, GB, GBK



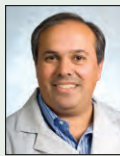
Tricia Moo-Young, MD
 Expertise: Minimally Invasive Approaches to Endocrine Disorders; Thyroid and Parathyroid Surgery; Adrenal Disorders; Pancreatic Exocrine; General Surgery
 Locations: HPS, VH



Elena Moore, MD
 Expertise: Cervical Cancer; Endometrial Cancer; Fallopian Tube Cancer; Ovarian Cancer; Uterine Cancer; Vaginal Cancer; Vulvar Cancer
 Locations: EVK, HPK



Joseph Muldoon, MD
 Expertise: Minimally Invasive Colon and Rectal Surgery; Colon and Rectal Cancer; Inflammatory Bowel Disease; General Surgery
 Locations: EV, GBK, GBM



Ranjeev Nanda, MD
 Expertise: Stereotactic Radiosurgery; Brain Tumors; Head and Neck Cancers
 Locations: EH, GBH



Cheryl Nocon, MD
 Expertise: Head and Neck Cancers; Thyroid and Parathyroid Surgery; Microvascular Reconstruction
 Locations: EVK, SK, VH



Kristian Novakovic, MD
 Expertise: Kidney Cancer; Prostate Cancer
 Locations: EV, GB



Bernhard Ortel, MD
Division Head, Dermatology
 Expertise: Skin Cancer; General Dermatology; Psoriasis; Blistering Diseases
 Location: SKM



Sangtae Park, MD, MPH
 Expertise: Prostate Cancer; Urologic Oncology
 Locations: EV, GB



Catherine Pesce, MD
Director, Surgical Breast Program
 Expertise: Breast Cancer; Breast Health; Breast Disease and Surgery
 Locations: HPB, HPK



Nicklas Pfanzteler, MD
 Expertise: Genitourinary Cancer; Lung Cancer
 Locations: EV, GB, HP



Ariel Polish, MD
 Expertise: GI Oncology; Benign and Malignant Hematology; Genitourinary Cancer; Lung Cancer
 Locations: EVK, GBK, GR



Richard Prinz, MD
Vice Chair, Administration & Clinical Development, Department of Surgery
 Expertise: Endocrine Surgery with Emphasis on Thyroid, Parathyroid, Adrenal and Pancreatic Neuroendocrine Surgery
 Locations: EV, HPS, MP



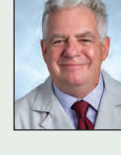
Amit Pursnani, MD
 Expertise: Cardio-Oncology; Clinical Cardiology
 Locations: EV, SK



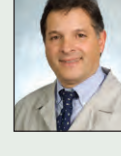
Vathsala Raghavan, MD
 Expertise: Breast Cancer; Gynecologic Oncology; Head and Neck Cancers; Thyroid Cancer
 Locations: GBH, HPH



Joseph Raviv, MD
 Expertise: Endoscopic Sinus and Anterior Skull Base Surgery
 Locations: EV, NMB



Erwin Robin, MD
 Expertise: Benign and Malignant Hematology
 Locations: GB, HP, SK



Gustavo Rodriguez, MD
Division Head, Gynecologic Oncology
 Expertise: Gynecologic Oncology
 Location: EVK

Cancer Conferences



Carol Rosenberg, MD
Director, Preventive Health Initiatives; Director, Myra Rubenstein Weis Living in the Future (LIFE) Cancer Survivorship Program
 Expertise: Cancer Survivorship
 Location: HPH



Poornima Saha, MD
 Expertise: Breast Cancer
 Locations: EVK, HPK, LB



Akhil Seth, MD
 Expertise: Breast Reconstruction; Aesthetic Breast and Body Surgery; Oncologic and Complex Wound Reconstruction
 Location: NMB



Arif Shaikh, MD
 Expertise: Stereotactic Radiosurgery; Head and Neck Cancers; Lung Cancer; Gynecologic and Breast Tumors
 Locations: EH, GBH



Daniel Shevrin, MD
Medical Director, Glenbrook Kellogg Cancer Center
 Expertise: Prostate Cancer; Genitourinary Cancer
 Locations: EVK, GBK



Michael Shinnars, MD
 Expertise: Otolaryngology; Lateral Skull Base Surgery
 Locations: EV, NMB



Mark Sisco, MD
Division Head, Plastic and Reconstructive Surgery
 Expertise: Plastic Surgery; Breast Reconstruction
 Location: NMB



Norm Smith, MD
 Expertise: Bladder Cancer, Testicular Cancer, Kidney Cancer, Advanced Urologic Cancers,
 Locations: EV, GB



James Spitz, MD
 Expertise: Colon and Rectal Surgery; Colonoscopy; General Surgery
 Locations: GBM, SK, VH



Mark Talamonti, MD
Department Chair, Surgery
 Expertise: Gastrointestinal Surgical Oncology; Pancreatic Cancer; Benign and Malignant Liver Tumors; Neuroendocrine Tumors
 Location: EVK



Leslie Mendoza Temple, MD
Integrative Medicine Medical Director
 Expertise: Integrative Medicine
 Location: GP



Michael Ujiki, MD
Division Head, Gastrointestinal & General Surgery
 Expertise: Gastrointestinal Surgical Oncology including Stomach and Esophagus; Minimally Invasive Endoscopic Surgery; Weight Loss Surgery; General Surgery
 Locations: EV, GBM



Elaine Lee Wade, MD
 Expertise: Breast Cancer; Benign Hematology
 Location: GBK



Jason Waldinger, MD
 Expertise: Skin Cancer; General Dermatology; Laser Procedures
 Location: LB



Lauren Wiebe, MD
 Expertise: Palliative Medicine; GI Oncology
 Locations: EH, GB



David J. Winchester, MD
Associate Director for Surgical Specialties, Kellogg Cancer Center
 Expertise: Surgical Oncology with Emphasis on Breast, Endocrine, Melanoma and Sarcoma
 Locations: EV, EVB, GBB, GBM



Ricky Wong, MD
 Expertise: Brain, Skull and Pituitary Tumors
 Locations: EV, GB



Katharine Yao, MD
Division Head, Surgical Oncology
 Expertise: Breast Cancer; Breast Health; Breast Disease and Surgery
 Locations: EVB, EVK

Breast Cancer Conferences

NorthShore Evanston Hospital
 Kellogg Room G868, Mondays, 7:30 a.m.
 NorthShore Glenbrook and Highland Park Hospitals Videocast

Colorectal Cancer Conferences

NorthShore Evanston Hospital
 Kellogg Room G868
 2nd and 4th Fridays, 7 a.m.
 NorthShore Glenbrook and Highland Park Hospitals Videocast

Genitourinary Cancer Conferences

NorthShore Evanston Hospital
 Kellogg Room G868
 1st and 3rd Fridays, 7 a.m.
 NorthShore Glenbrook Hospital Videocast

Gynecology Cancer Conferences

NorthShore Evanston Hospital
 Kellogg Room G868, Thursdays, 7 a.m.
 NorthShore Glenbrook and Highland Park Hospitals Videocast

Head and Neck Cancer Conferences

NorthShore Evanston Hospital
 Kellogg Room G868
 1st and 3rd Thursdays, 8 a.m.

Hematology/Pathology Conferences

NorthShore Evanston Hospital
 Kellogg Room G868
 Tuesdays, 8:00 a.m.
 NorthShore Glenbrook and Highland Park Hospitals Videocast

Hepatic Biliary Pancreatic Cancer Conferences

NorthShore Evanston Hospital
 Kellogg Room G868, Tuesdays, 7 a.m.
 NorthShore Glenbrook and Highland Park Hospitals Videocast

Molecular Oncology Conferences

NorthShore Evanston Hospital
 Kellogg Room 4818, 1st Friday, 7 a.m.

Neuro-Oncology Cancer Conferences

NorthShore Evanston Hospital
 Kellogg Room G868
 2nd and 4th Wednesdays, 7:30 a.m.
 NorthShore Glenbrook and Highland Park Hospitals Videocast

Sarcoma/Melanoma Conferences

NorthShore Evanston Hospital
 Kellogg Room G868
 1st and 3rd Wednesdays, 8 a.m.
 NorthShore Glenbrook and Highland Park Hospitals Videocast

Thoracic Cancer Conferences

NorthShore Evanston Hospital
 Kellogg Room G868, Tuesdays, noon
 NorthShore Glenbrook and Highland Park Hospitals Videocast

Evanston Hospital
2650 Ridge Avenue
Evanston, Illinois 60201
(847) 570-2000

Glenbrook Hospital
2100 Pfingsten Road
Glenview, Illinois 60026
(847) 657-5800

Highland Park Hospital
777 Park Avenue West
Highland Park, Illinois 60035
(847) 432-8000

Skokie Hospital
9600 Gross Point Road
Skokie, Illinois 60076
(847) 677-9600

Medical Group
1301 Central Street
Evanston, Illinois 60201
(847) 570-5235

Foundation
1033 University Place, Suite 450
Evanston, Illinois 60201
(224) 364-7200

Research Institute
1001 University Place
Evanston, Illinois 60201
(224) 364-7100



1301 Central Street
Evanston, Illinois 60201

northshore.org

A publication of the Office of Corporate Communications

EDITOR: Amy Ferguson, Assistant Vice President, Integrated Marketing and Corporate Communications

PHOTOGRAPHY: Allen Bourgeois, Jon Hillenbrand

WRITER: Susan J. White

Cancer Committee 2019

Chairman

David J. Winchester, MD, FACS
Associate Director for Surgical Specialties,
Kellogg Cancer Center,
NorthShore Cancer Committee Chairman,
Board of Directors, David P. Winchester, MD,
Chair of Surgical Oncology

Physician Membership*

Matthew Adess, MD
Medical Director, Highland Park
Kellogg Cancer Center

Kristina Drabkin, DO
Physical Medicine & Rehabilitation

David Grinblatt, MD
Director, Oncology Research Program
Kellogg Cancer Center

Thomas Hensing, MD
Co-Director, Thoracic Oncology Program
Head of Quality, Kellogg Cancer Center
Deputy Division Head,
Division of Hematology and Oncology
Medical Director, Evanston Kellogg Cancer
Center
NorthShore Cancer Committee Quality
Improvement Coordinator

Seth Krantz, MD
Thoracic Oncology
NorthShore Cancer Committee Cancer
Liaison Physician

Elena Moore, MD
Gynecologic Oncology

Vice Chairman

Bruce Brockstein, MD
Medical Director, Kellogg Cancer Center,
Head, Division of Hematology/Oncology,
Kellogg-Scanlon Chair of Oncology,
NorthShore Cancer Committee Vice-Chairman,
NorthShore Cancer Committee Cancer
Conference Coordinator

Kristian Novakovic, MD
Urologic Oncology

Catherine Pesce, MD
Surgical Oncology

Vathsala Raghavan, MD
Radiation Oncology

Carol Rosenberg, MD
Director, Myra Rubenstein Weis
Living in the Future (LIFE) Cancer
Survivorship Program

Poornima Saha, MD
Medical Oncology

Arif Shaikh, MD
Radiation Oncology

Lauren Wiebe, MD
Palliative Care

Ancillary Membership

Jonella Black, PT, MS
Program Coordinator, Rehab Services

George Carro, RPH, MS, BCOP
Senior Director, Oncology Pharmacy

Kim Cholewa, BSN
Oncology Nursing

Jamie Feld, RN
Cancer Committee Coordinator
Cancer Registry

Amy Ferguson
Assistant Vice President,
Integrated Marketing and
Corporate Communications

Laurel Gage, RHIT, CTR
Cancer Registry Abstractor II
Kellogg Cancer Center

Addie Gorchow, MBA, RHIT, CTR
Senior Manager, Cancer Registry

Linda Green, RN, MS, AOCNS
Director, Medical Group Operations,
Oncology Nursing, Kellogg Cancer Center

Rachel Mees
Assistant Vice President,
Medical Group
Kellogg Cancer Center

Sabina Omercajjic, MS, CCRP
Outreach Coordinator
Kellogg Cancer Center
NorthShore Cancer Committee
Community Outreach Coordinator

Anisha Patel, APN
Clinical Coordinator
Living in the Future (LIFE)
Cancer Survivorship Program

Shayna Purcell, MSCGC
Medical Genetics

Denise Rehberger, RN, BSN
Manager, Hospice

Kelly Tinnes
Health Systems Manager
American Cancer Society

Roslyn Turner, LSW
Oncology Social Worker
Kellogg Cancer Center
NorthShore Cancer Committee
Psychosocial Services Coordinator

Maria Velez
Coordinator, IRB Research
Oncology Research
NorthShore Cancer Committee
Clinical Research Coordinator

Debra Ziegler, MLIS, CTR
Quality Coordinator, Cancer Registry
NorthShore Cancer Committee
Cancer Registry Quality Coordinator

Lisa Zoberman, RDN, LDN
Oncology Nutrition
Kellogg Cancer Center



* All academic affiliations are with the University of Chicago Pritzker School of Medicine